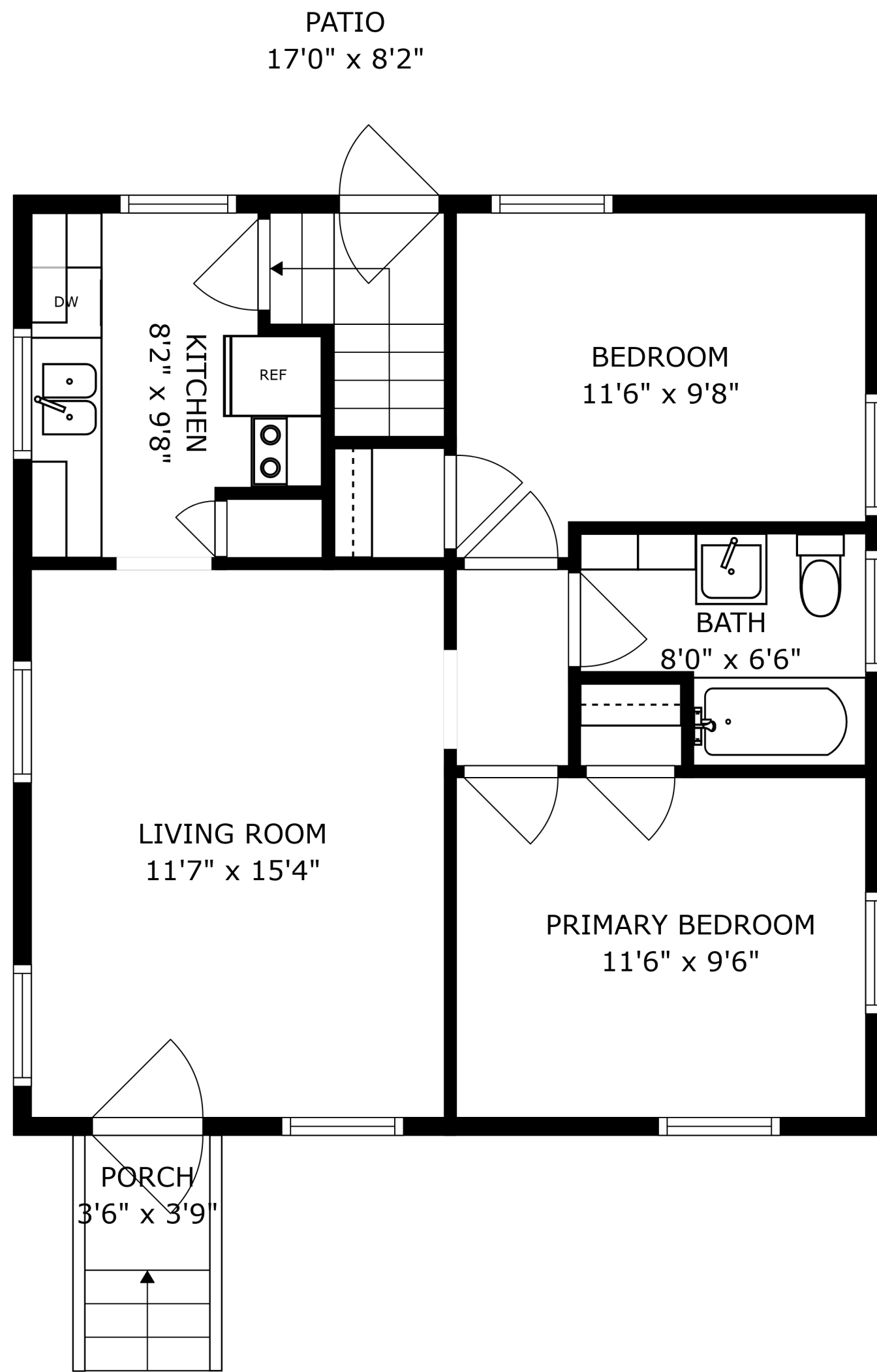


BASEMENT
23'4" x 25'4"

FLOOR 1



PATIO
17'0" x 8'2"

KITCHEN
8'2" x 9'8"

BEDROOM
11'6" x 9'8"

BATH
8'0" x 6'6"

LIVING ROOM
11'7" x 15'4"

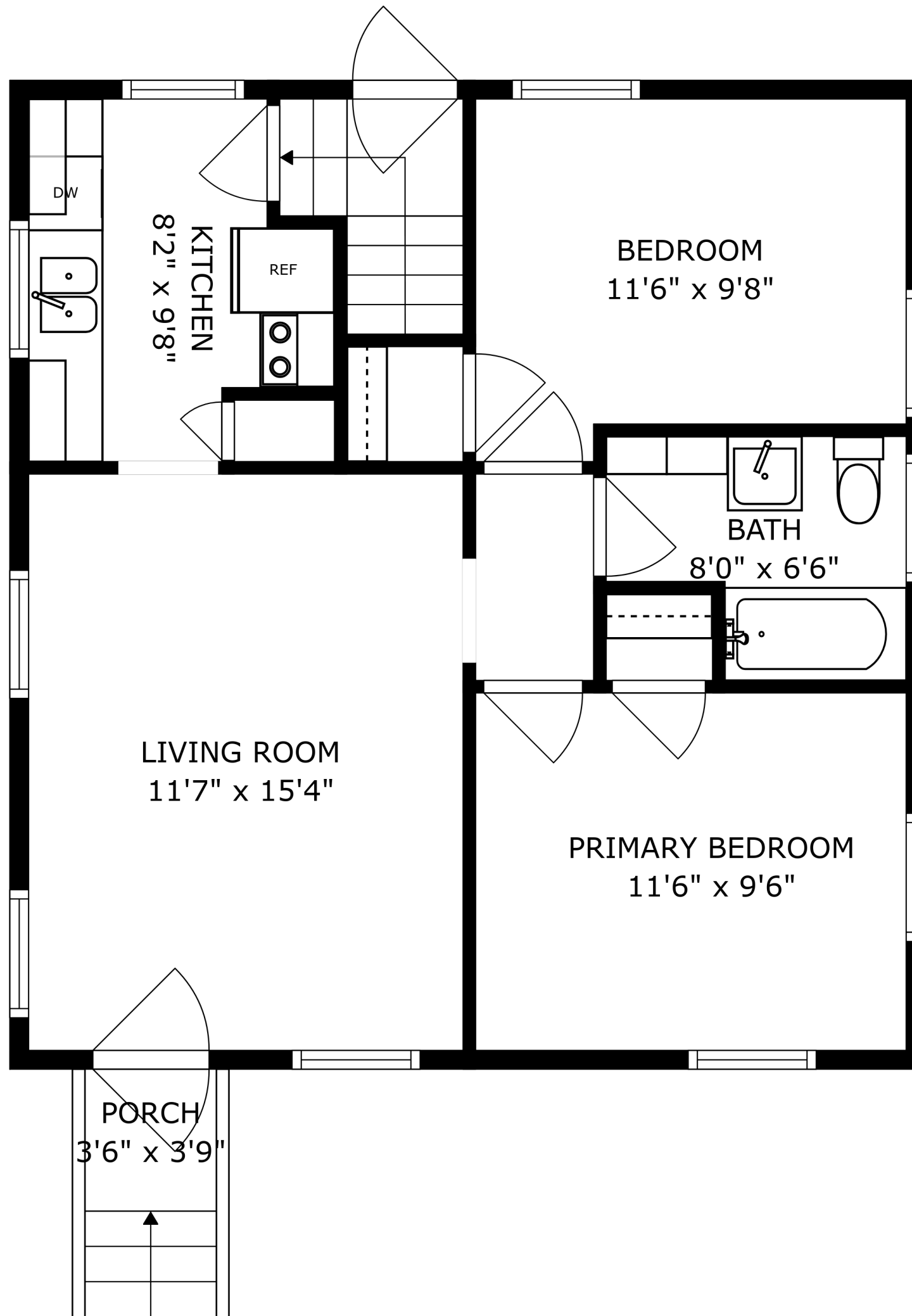
PRIMARY BEDROOM
11'6" x 9'6"

PORCH
3'6" x 3'9"

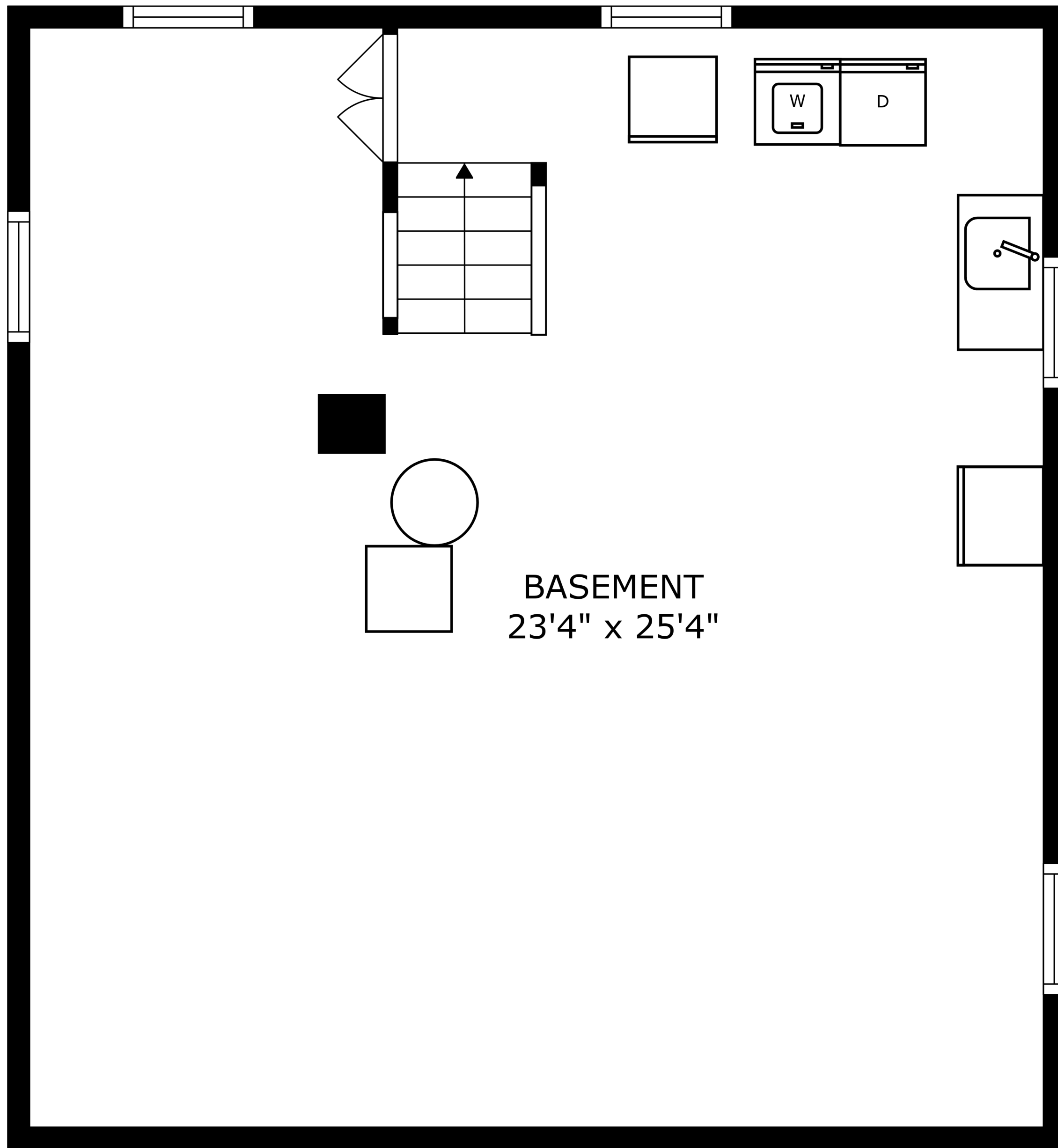
FLOOR 2

SIZES AND DIMENSIONS ARE APPROXIMATE, ACTUAL MAY VARY.

PATIO
17'0" x 8'2"



SIZES AND DIMENSIONS ARE APPROXIMATE, ACTUAL MAY VARY.



SIZES AND DIMENSIONS ARE APPROXIMATE, ACTUAL MAY VARY.