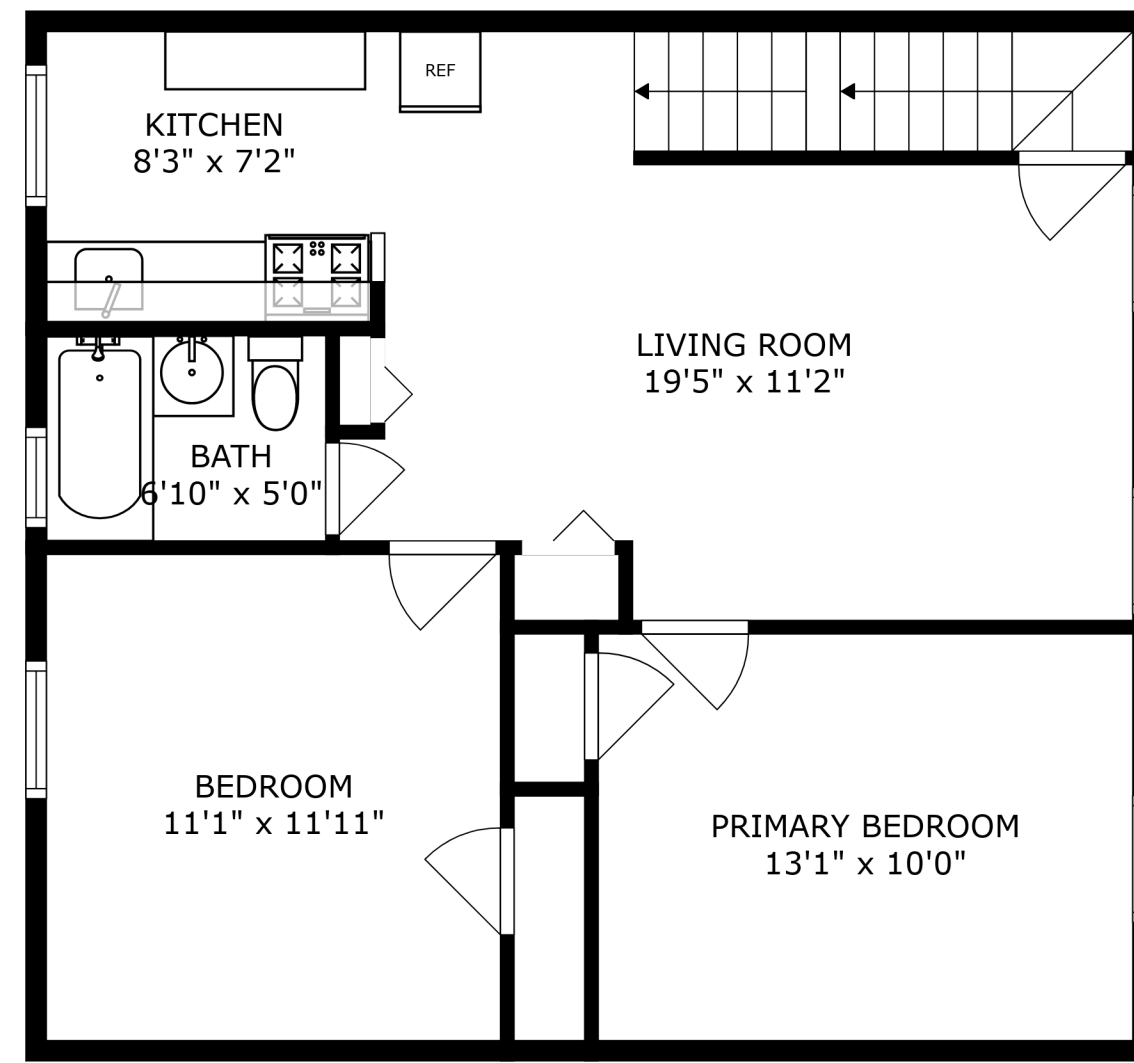
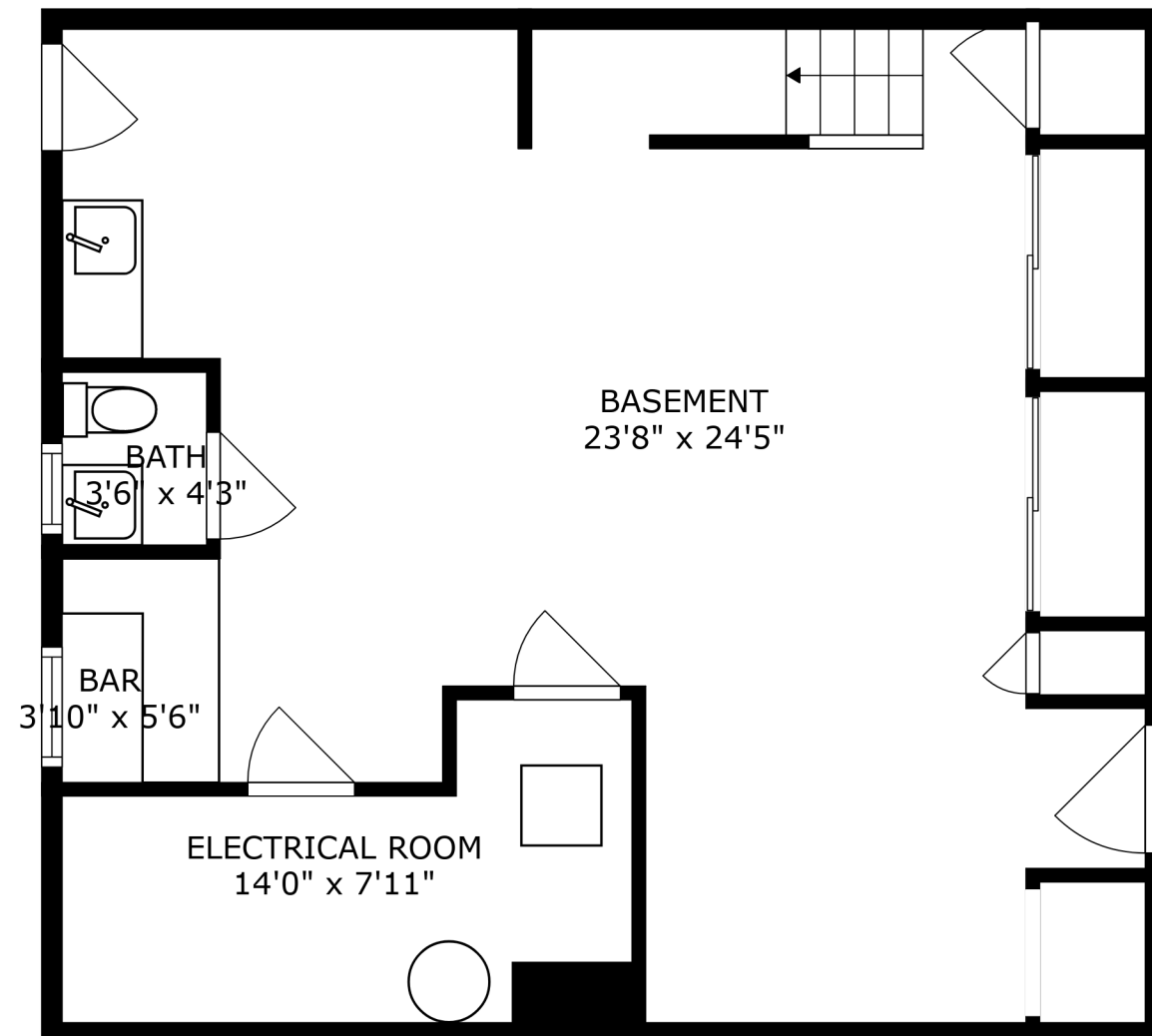


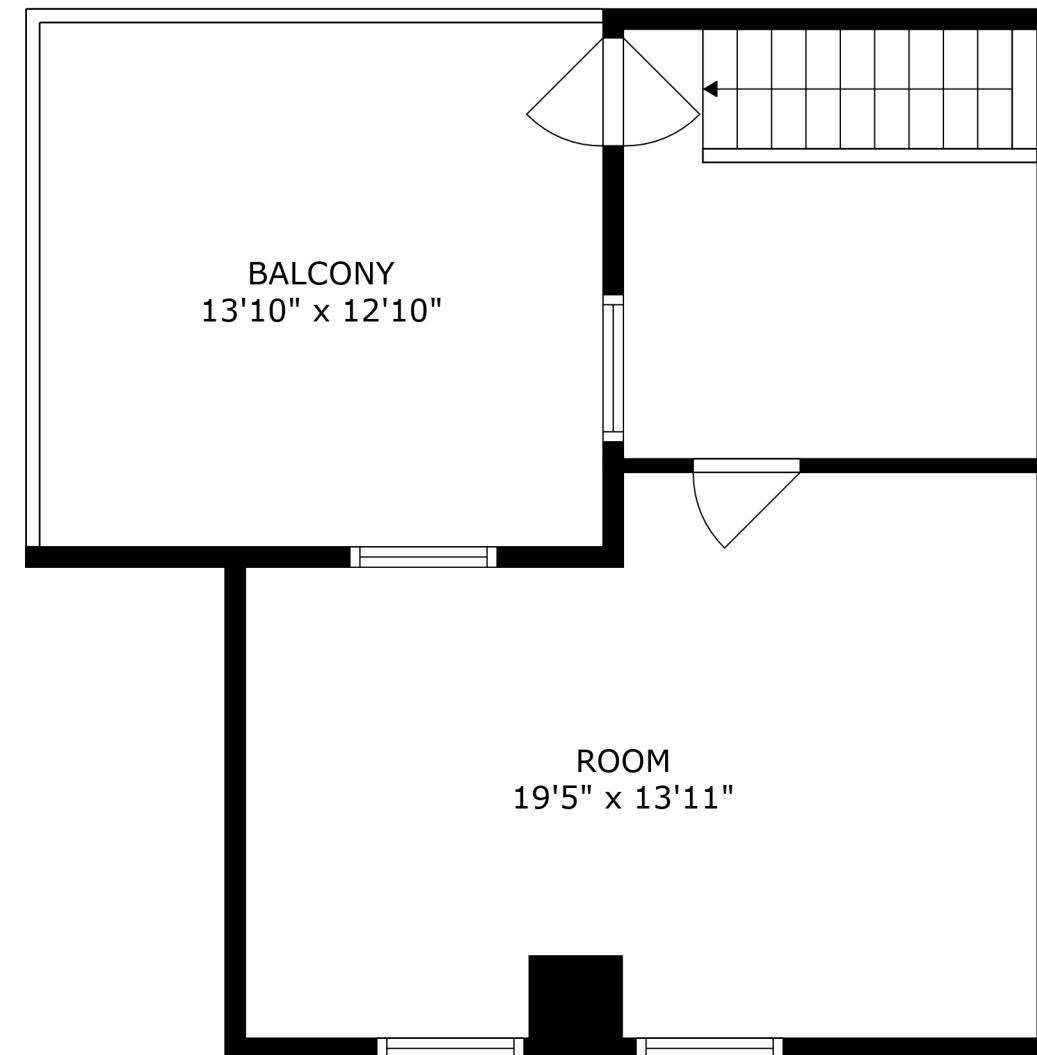
FLOOR 2



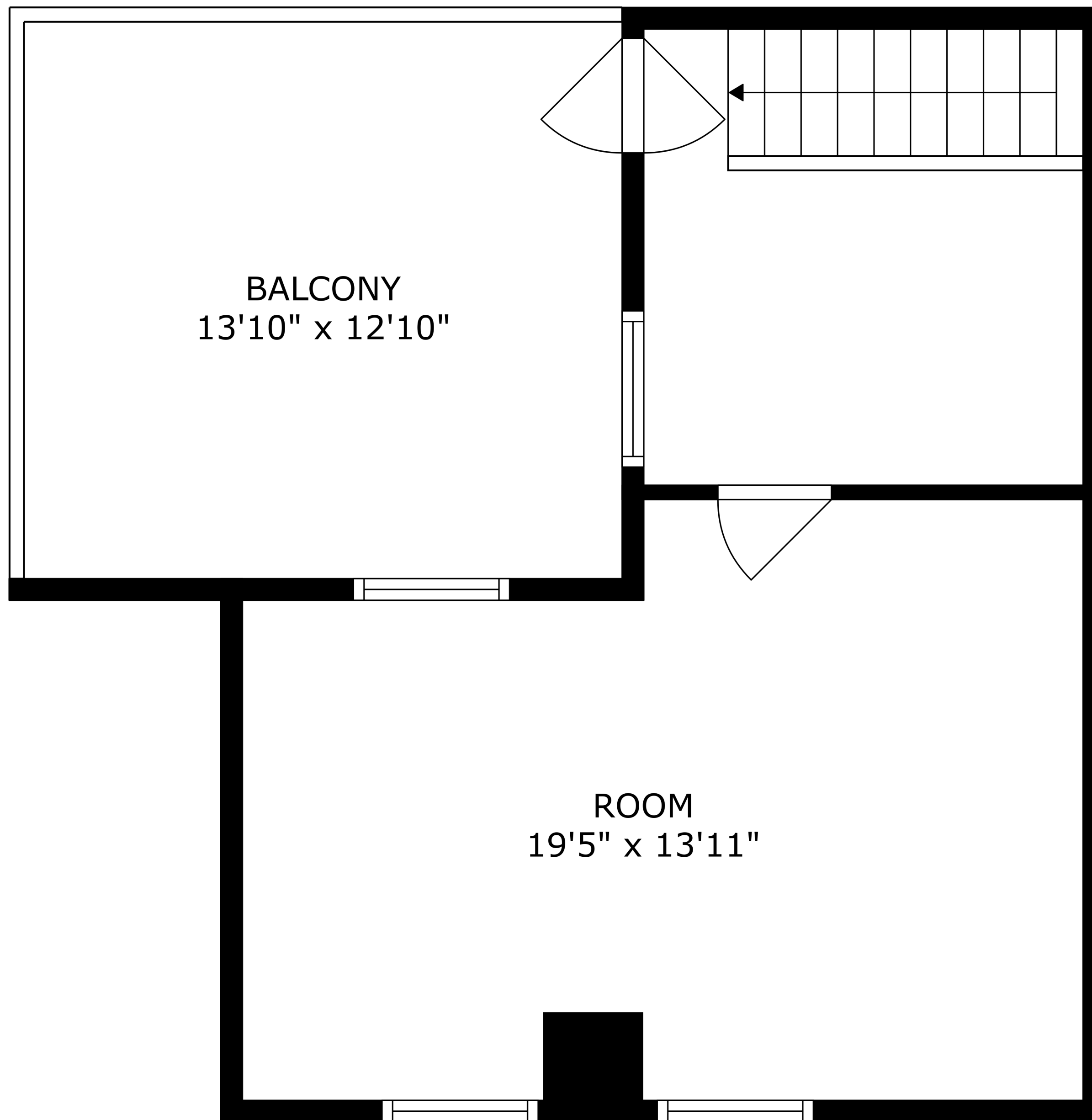
FLOOR 3



FLOOR 1

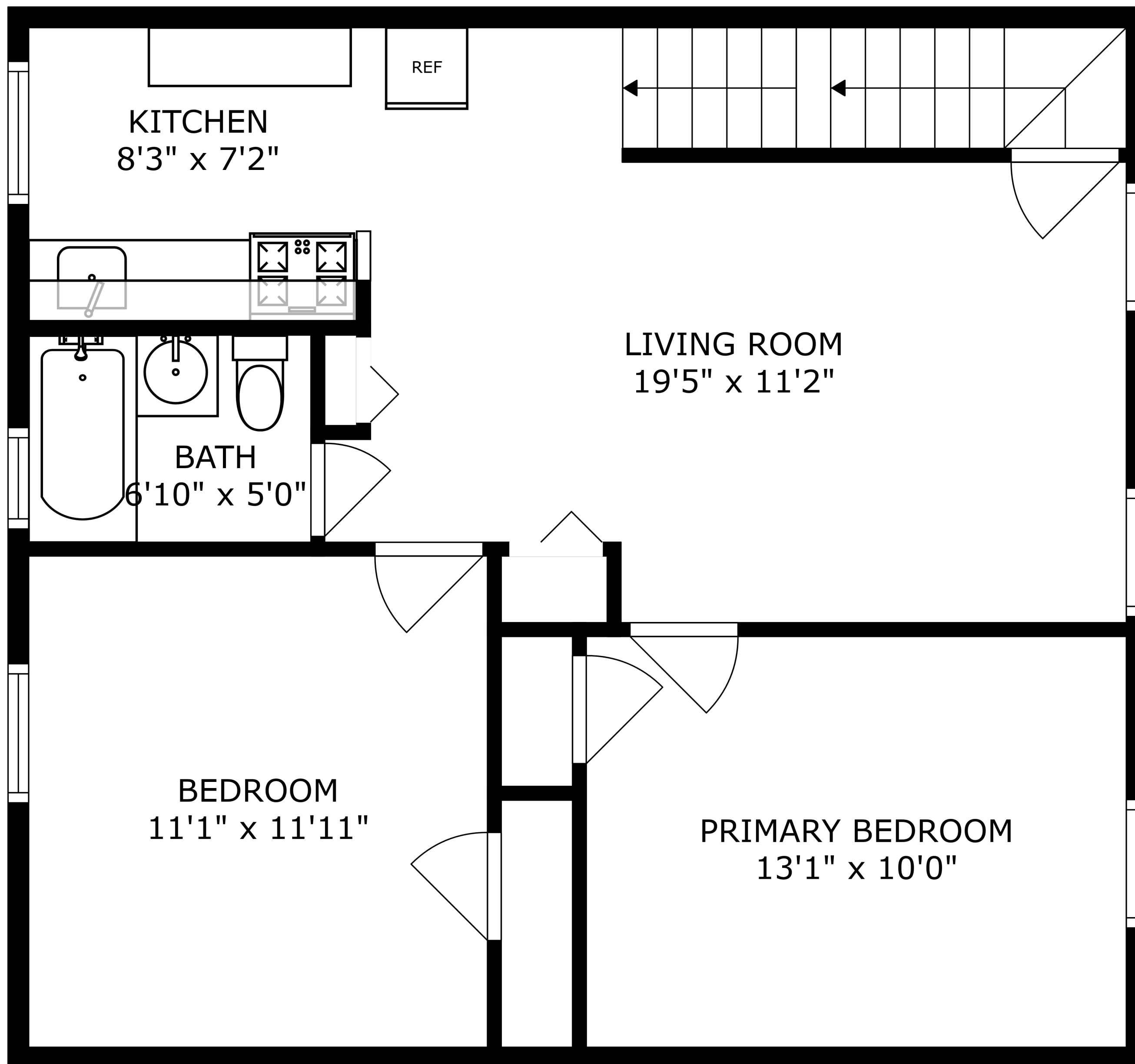


FLOOR 4



BALCONY
13'10" x 12'10"

ROOM
19'5" x 13'11"



KITCHEN
8'3" x 7'2"

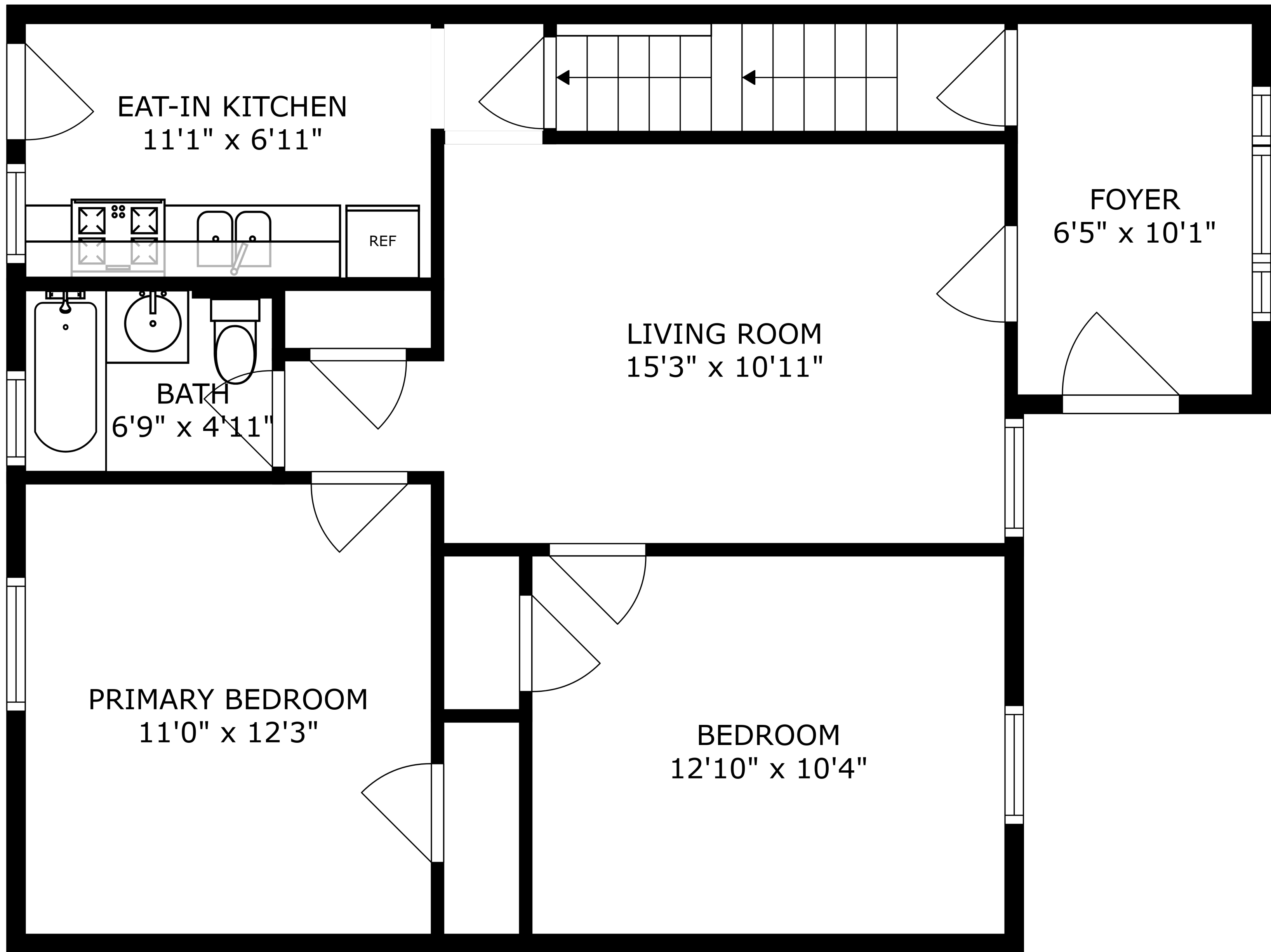
REF

LIVING ROOM
19'5" x 11'2"

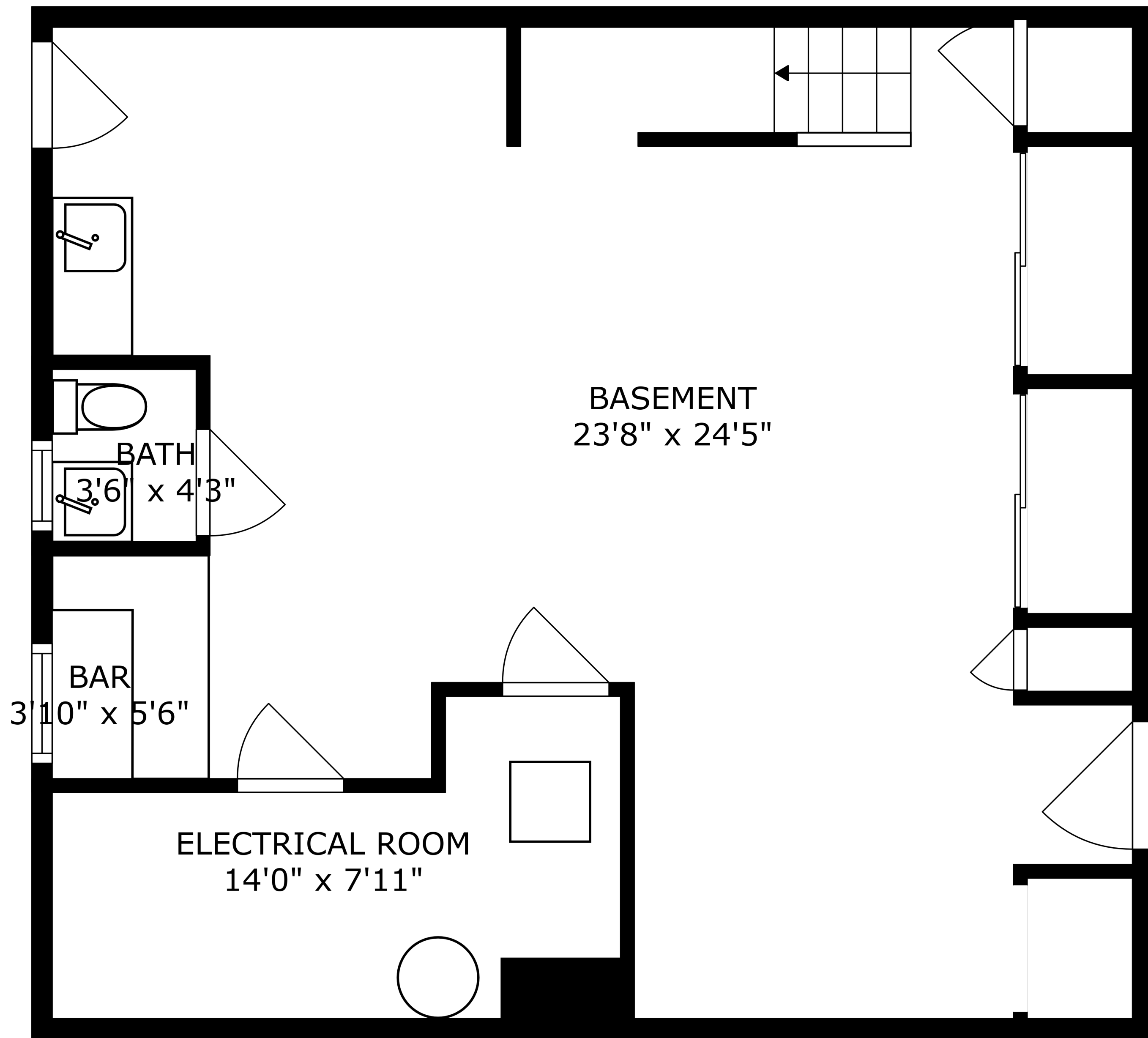
BATH
6'10" x 5'0"

BEDROOM
11'1" x 11'11"

PRIMARY BEDROOM
13'1" x 10'0"



SIZES AND DIMENSIONS ARE APPROXIMATE, ACTUAL MAY VARY.



BASEMENT
23'8" x 24'5"

BATH
3'6" x 4'3"

BAR
3'10" x 5'6"

ELECTRICAL ROOM
14'0" x 7'11"

SIZES AND DIMENSIONS ARE APPROXIMATE, ACTUAL MAY VARY.