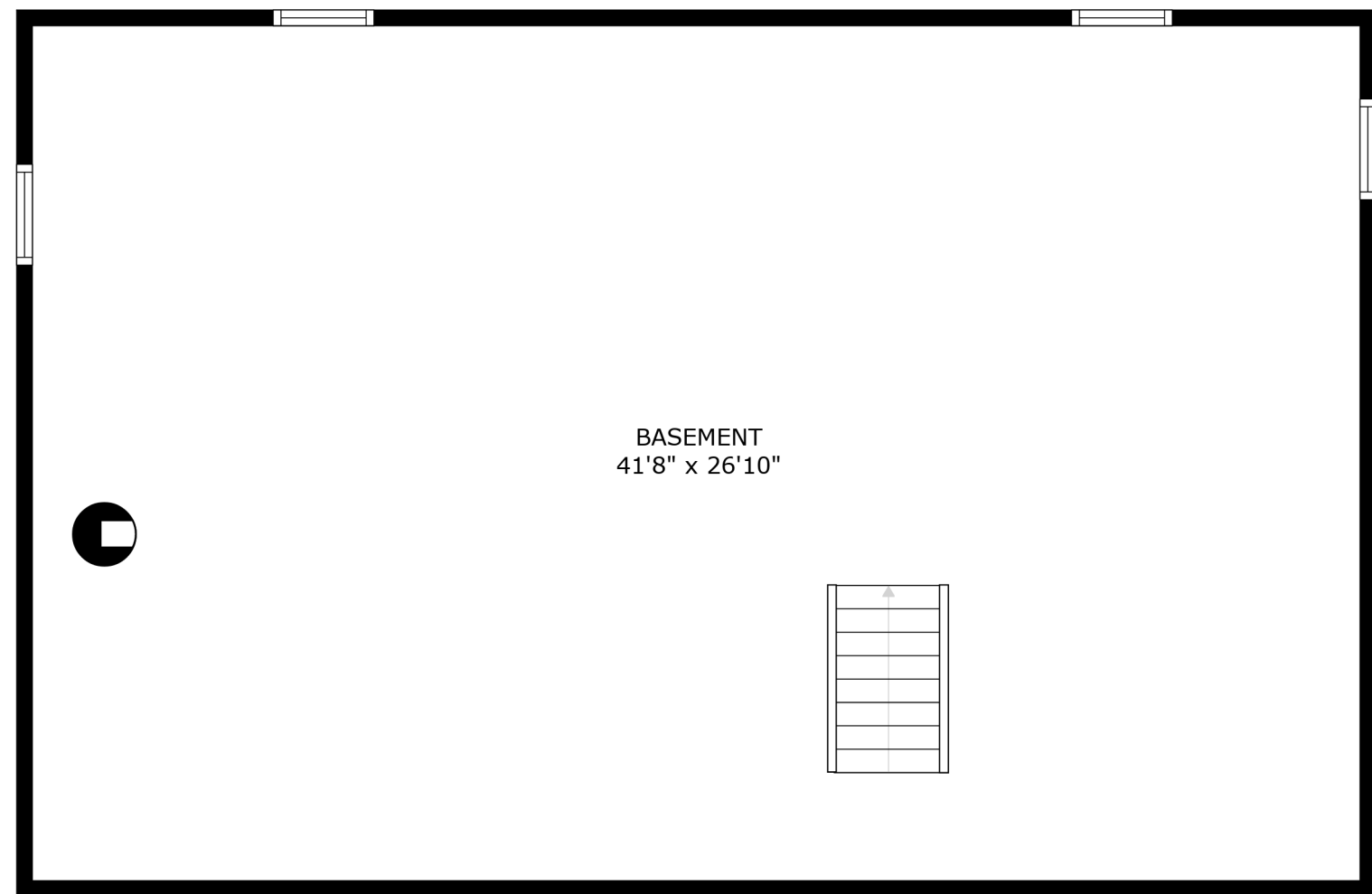
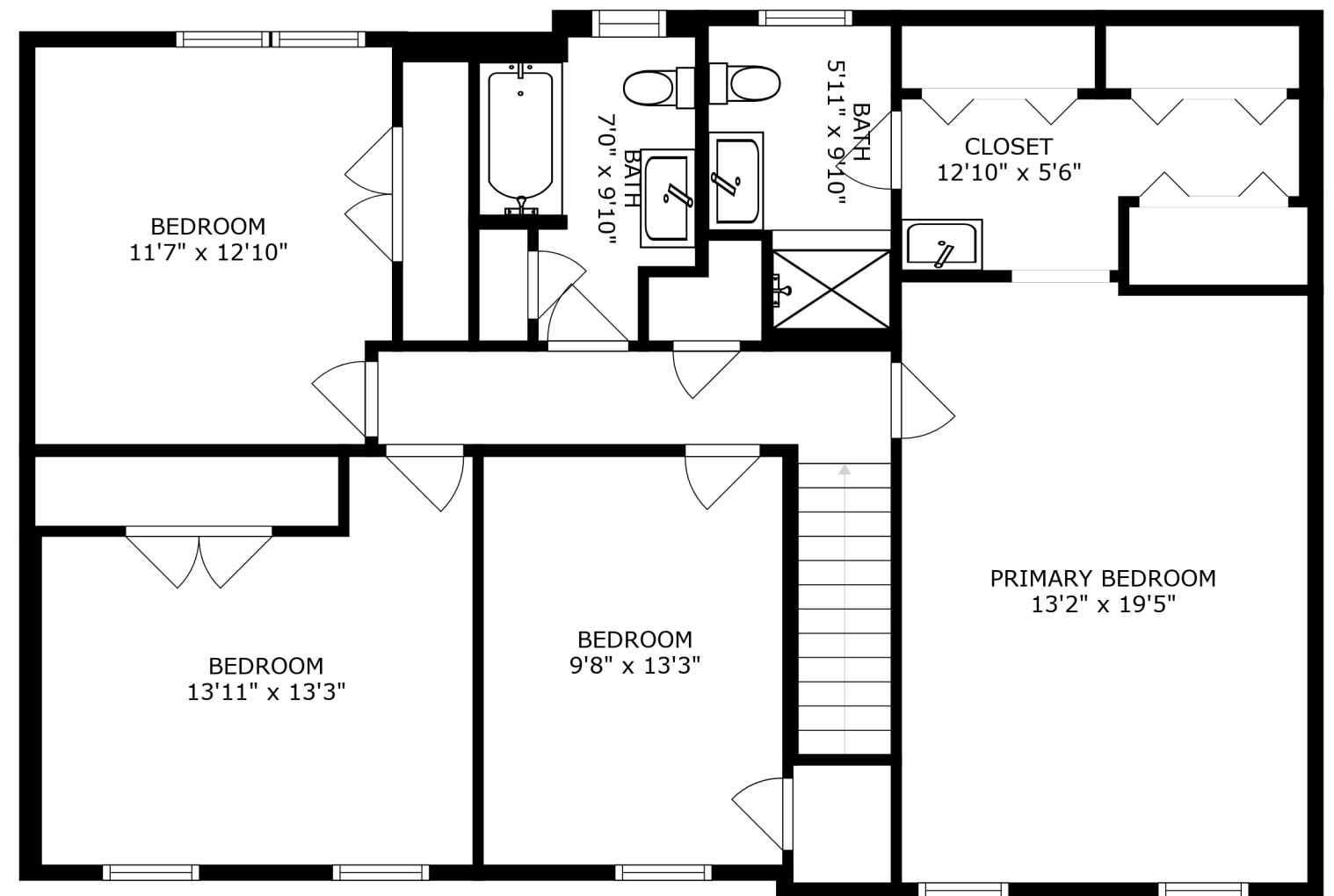


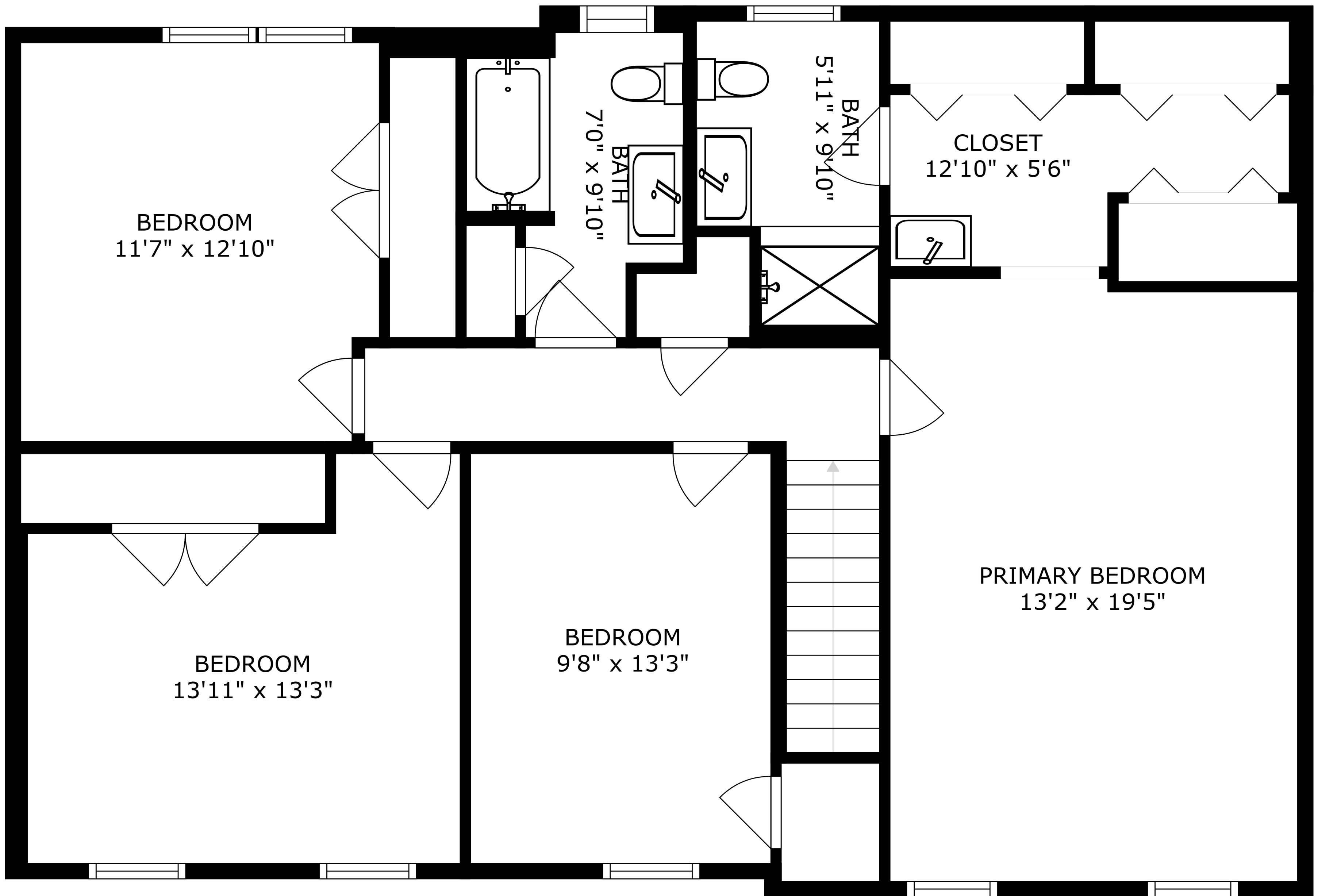
FLOOR 2



FLOOR 1



FLOOR 3



BEDROOM  
11'7" x 12'10"

BATH  
7'0" x 9'10"

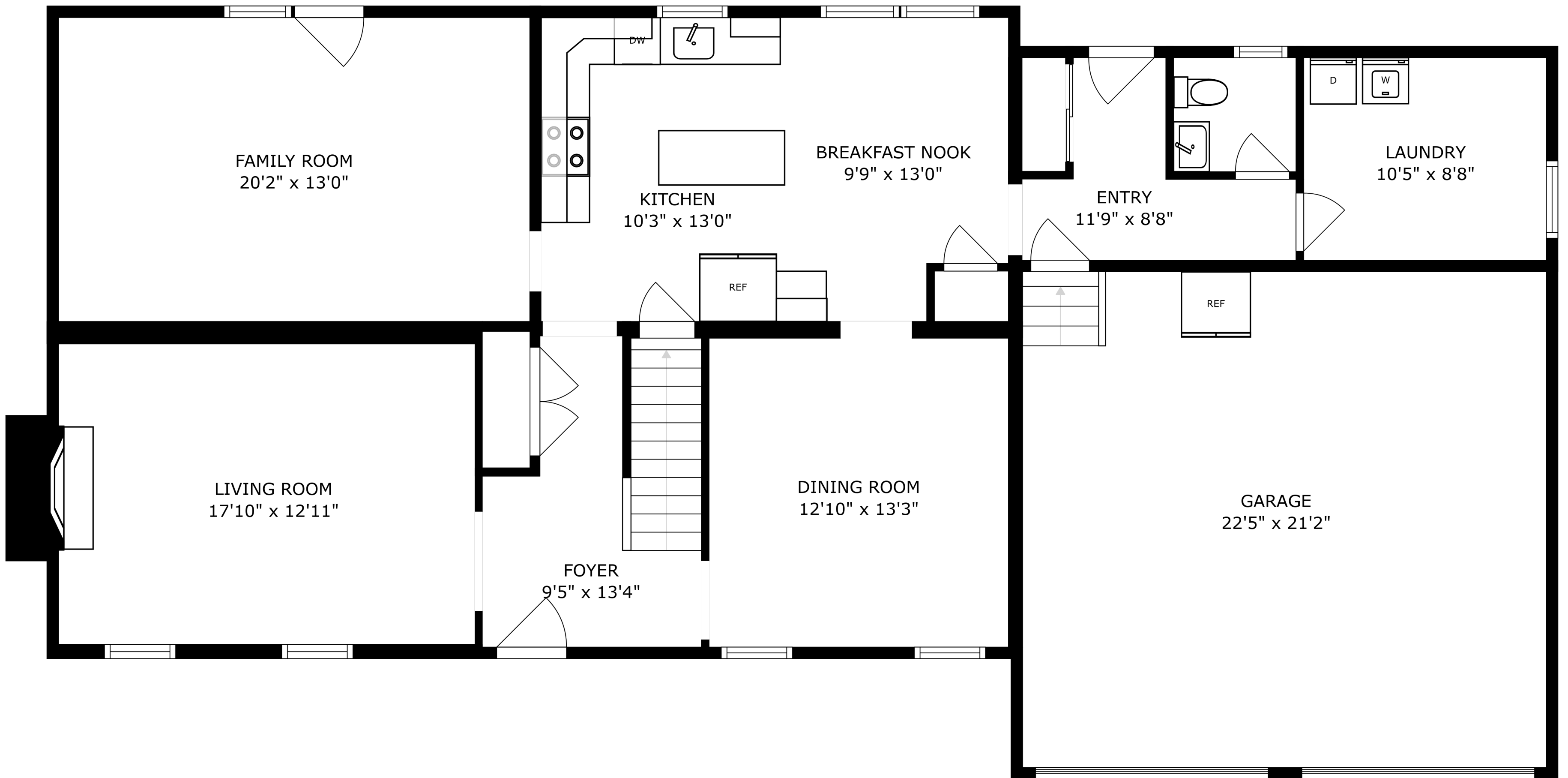
BATH  
5'11" x 9'10"

CLOSET  
12'10" x 5'6"

BEDROOM  
13'11" x 13'3"

BEDROOM  
9'8" x 13'3"

PRIMARY BEDROOM  
13'2" x 19'5"



SIZES AND DIMENSIONS ARE APPROXIMATE, ACTUAL MAY VARY.

BASEMENT  
41'8" x 26'10"

