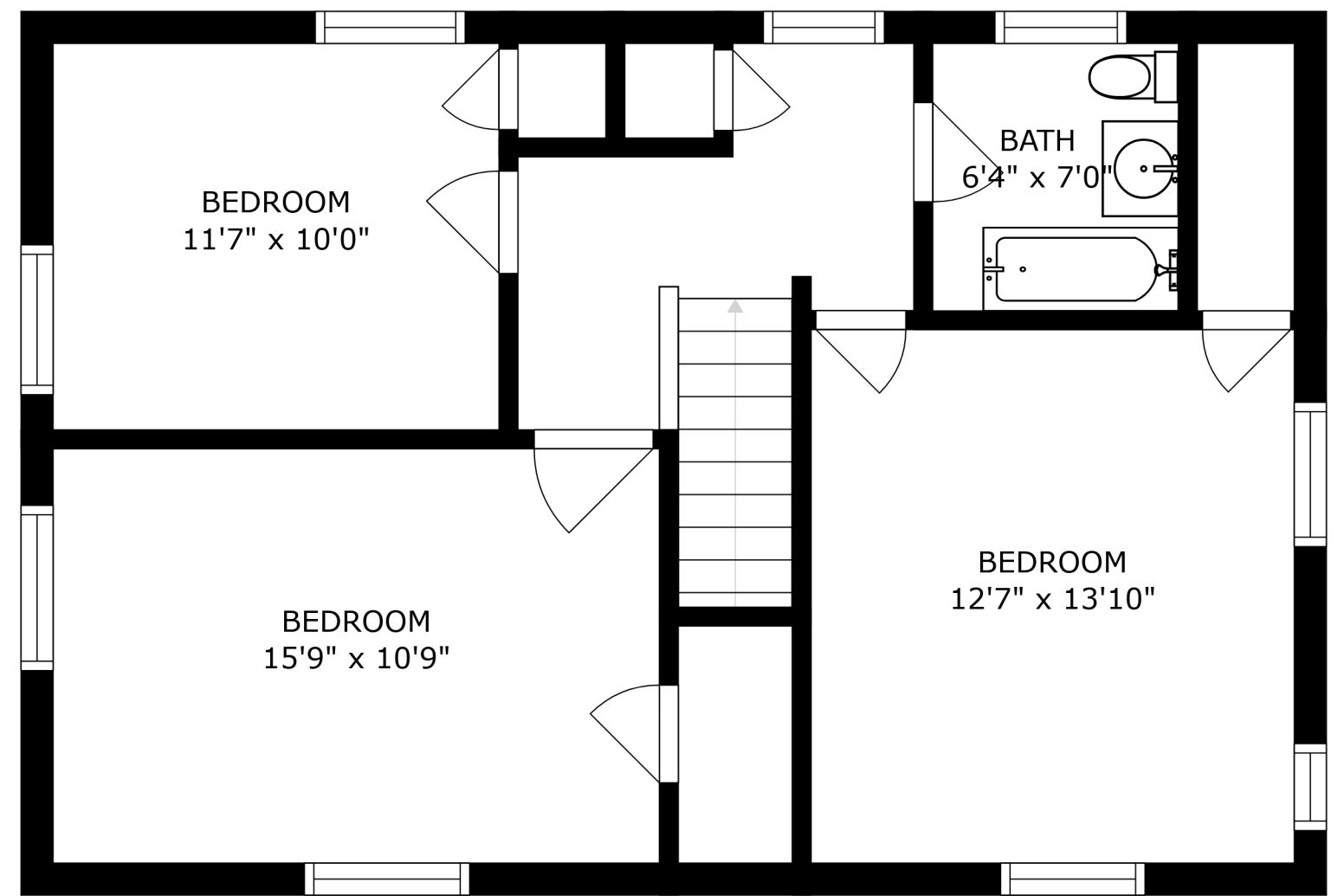
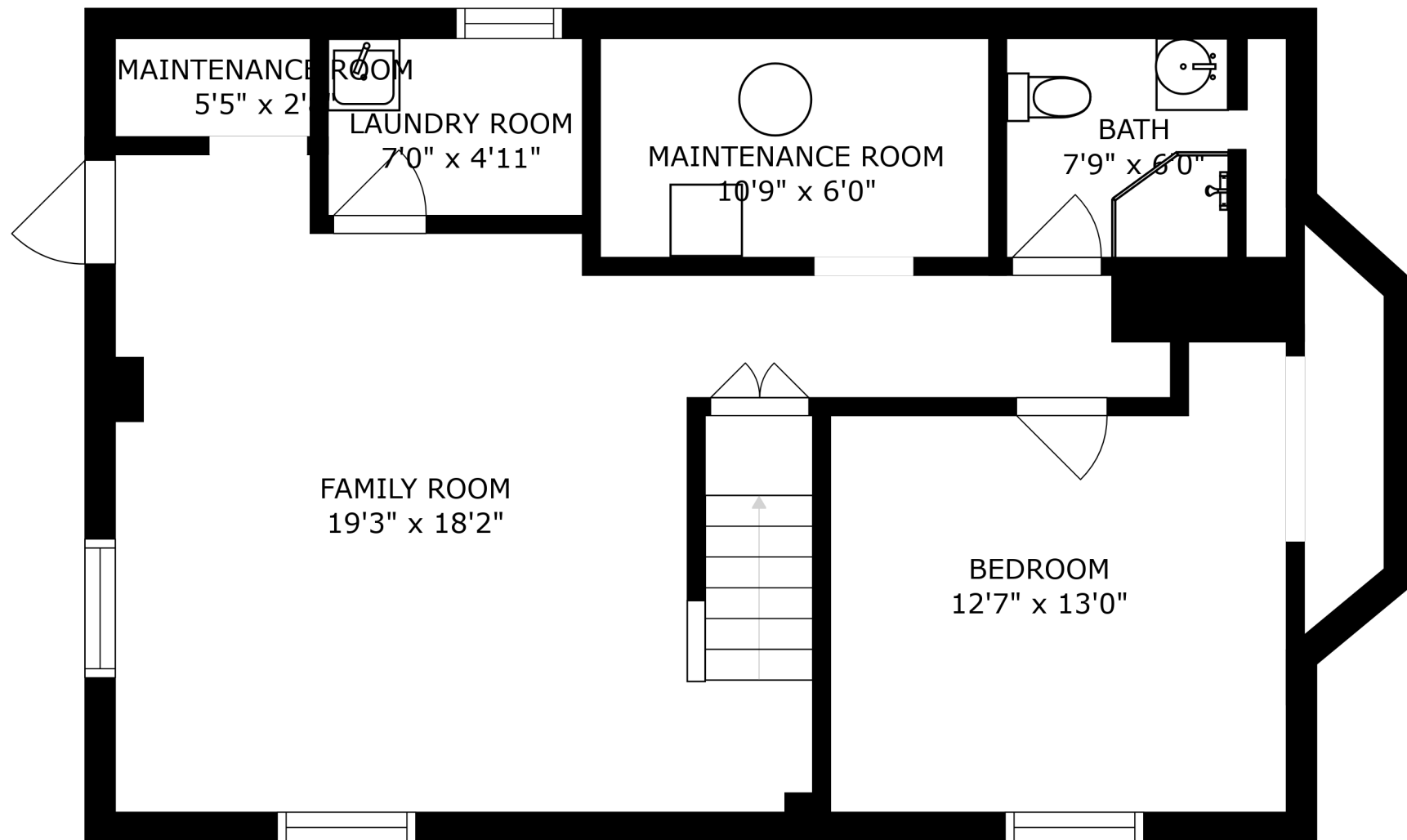


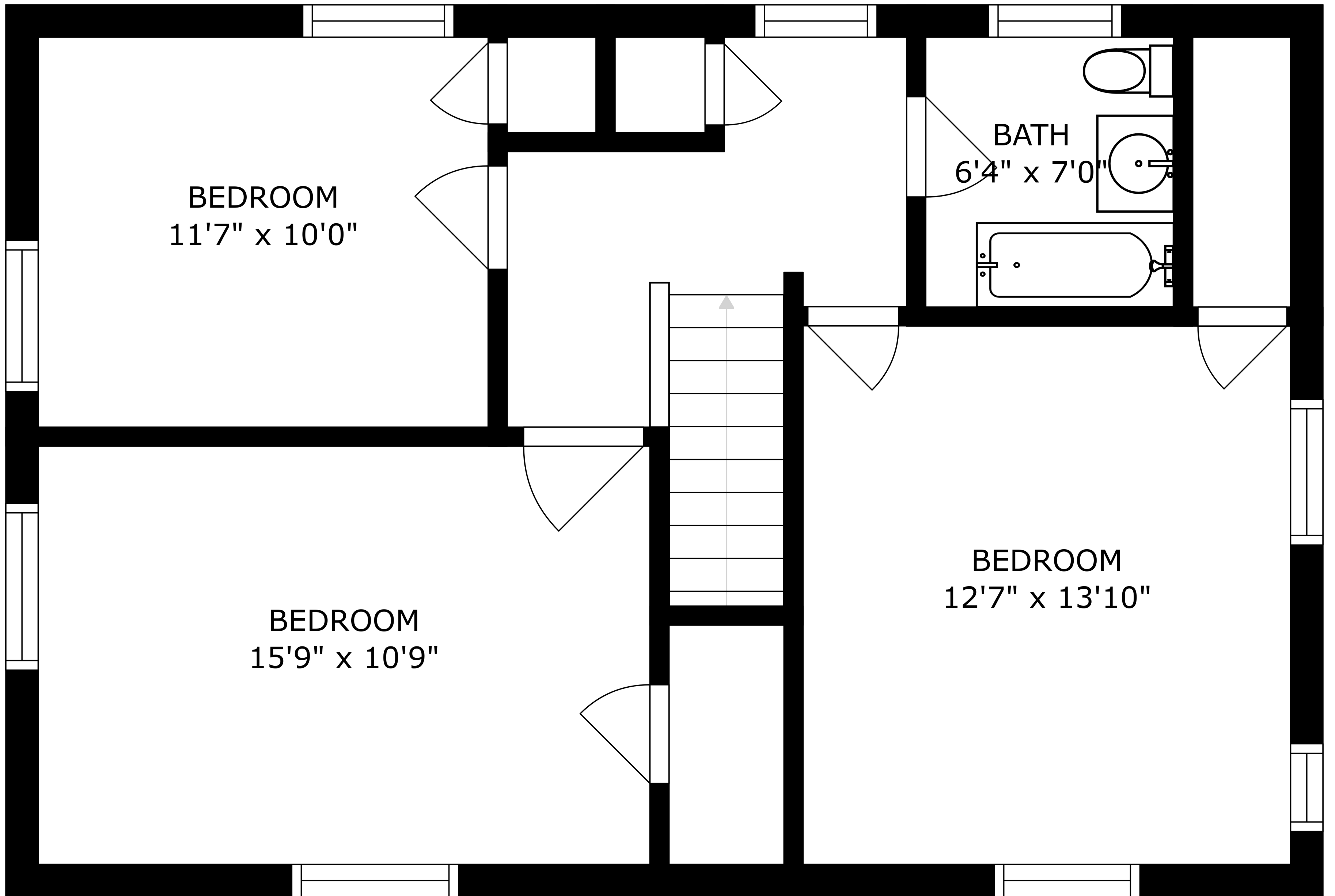
FLOOR 2



FLOOR 3



FLOOR 1

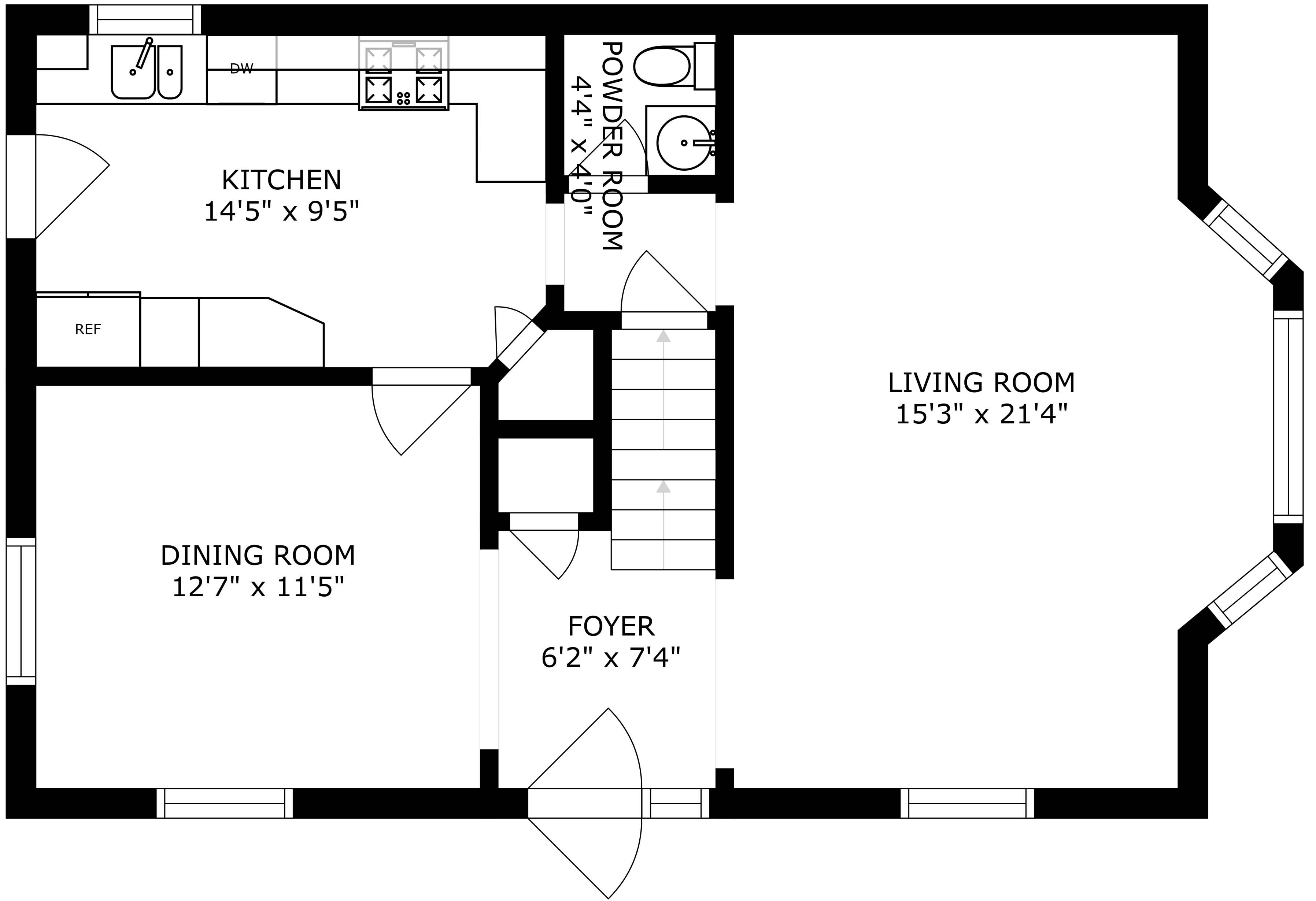


BEDROOM  
11'7" x 10'0"

BATH  
6'4" x 7'0"

BEDROOM  
15'9" x 10'9"

BEDROOM  
12'7" x 13'10"



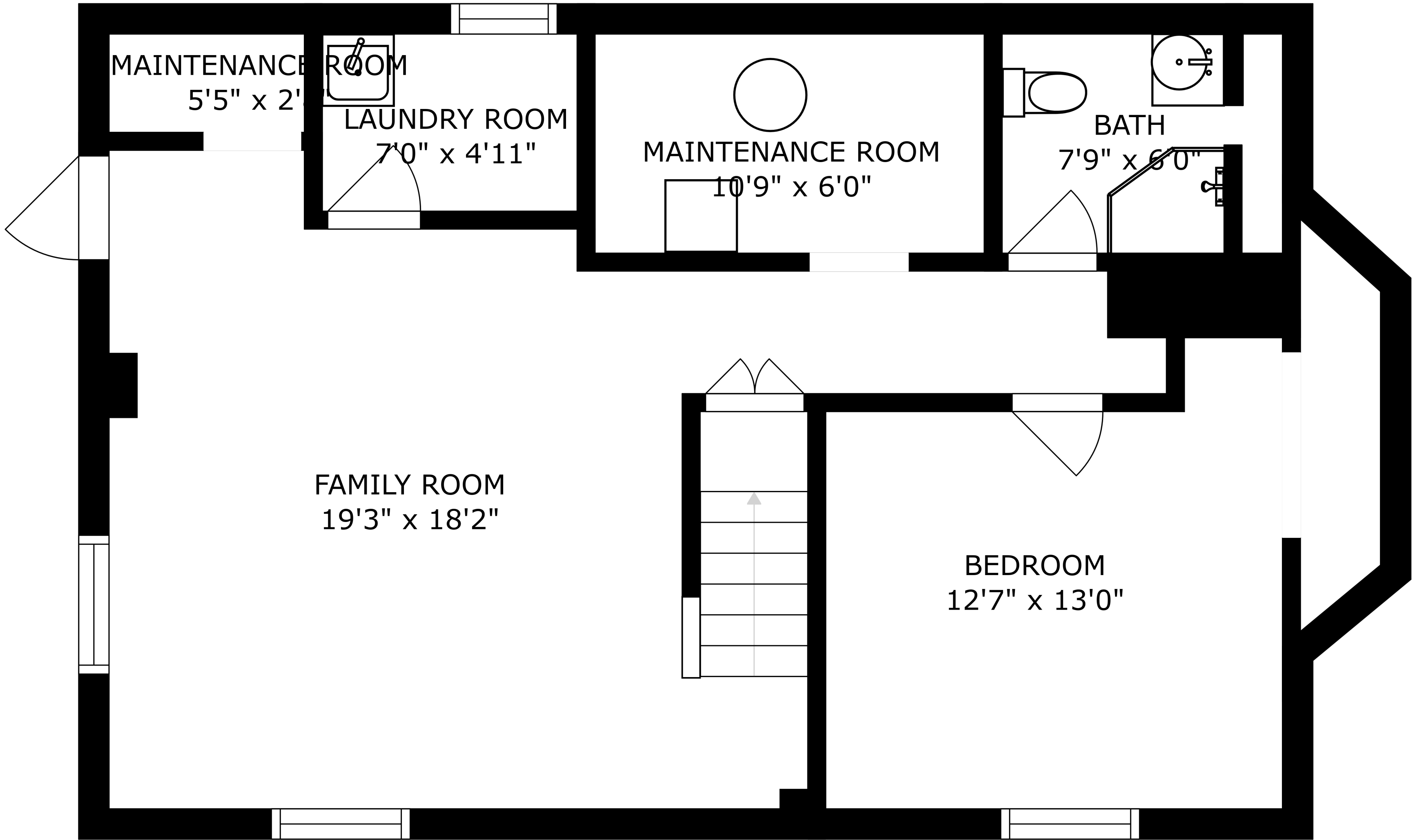
KITCHEN  
14'5" x 9'5"

POWDER ROOM  
4'4" x 4'0"

LIVING ROOM  
15'3" x 21'4"

DINING ROOM  
12'7" x 11'5"

FOYER  
6'2" x 7'4"



SIZES AND DIMENSIONS ARE APPROXIMATE, ACTUAL MAY VARY.