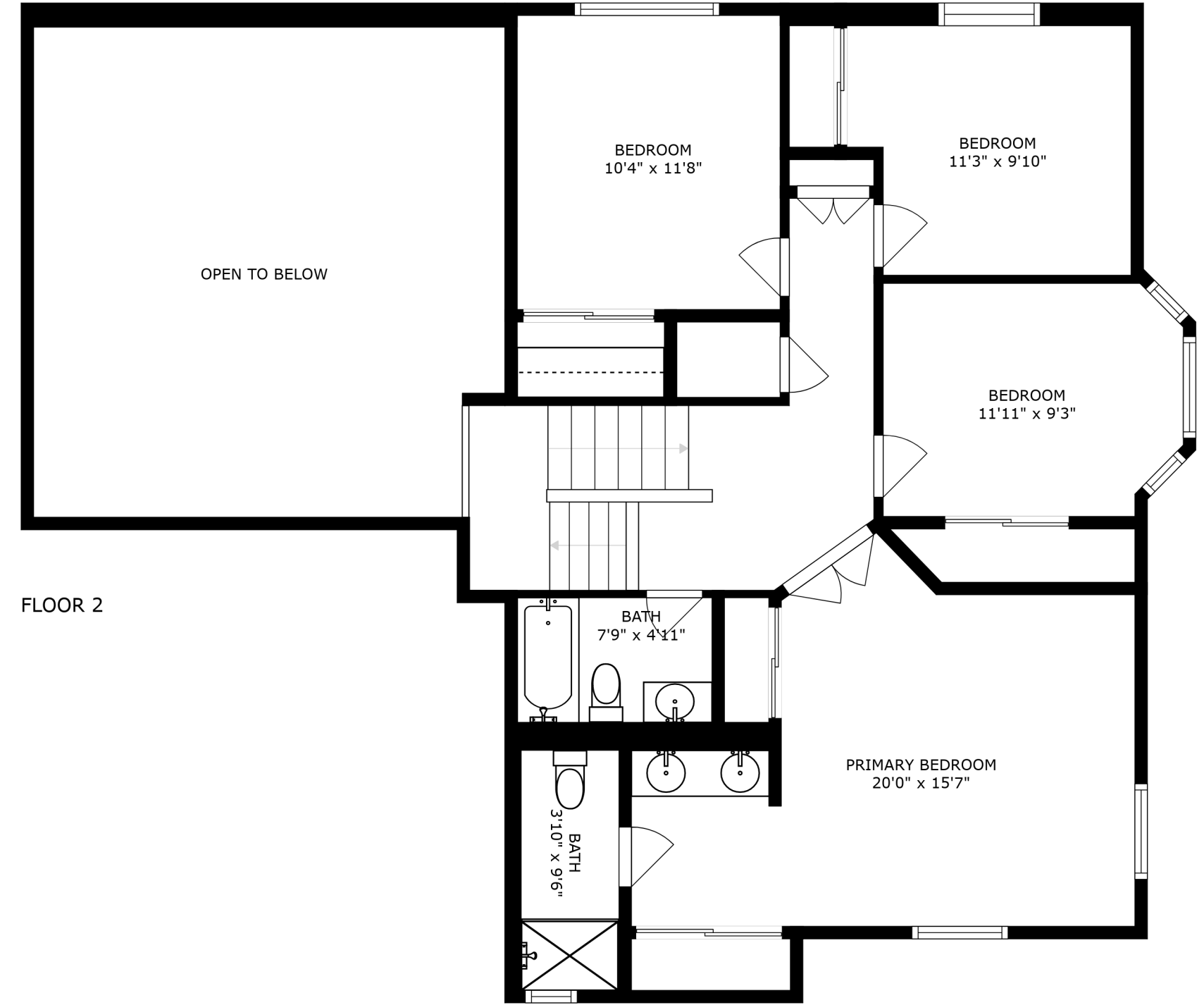
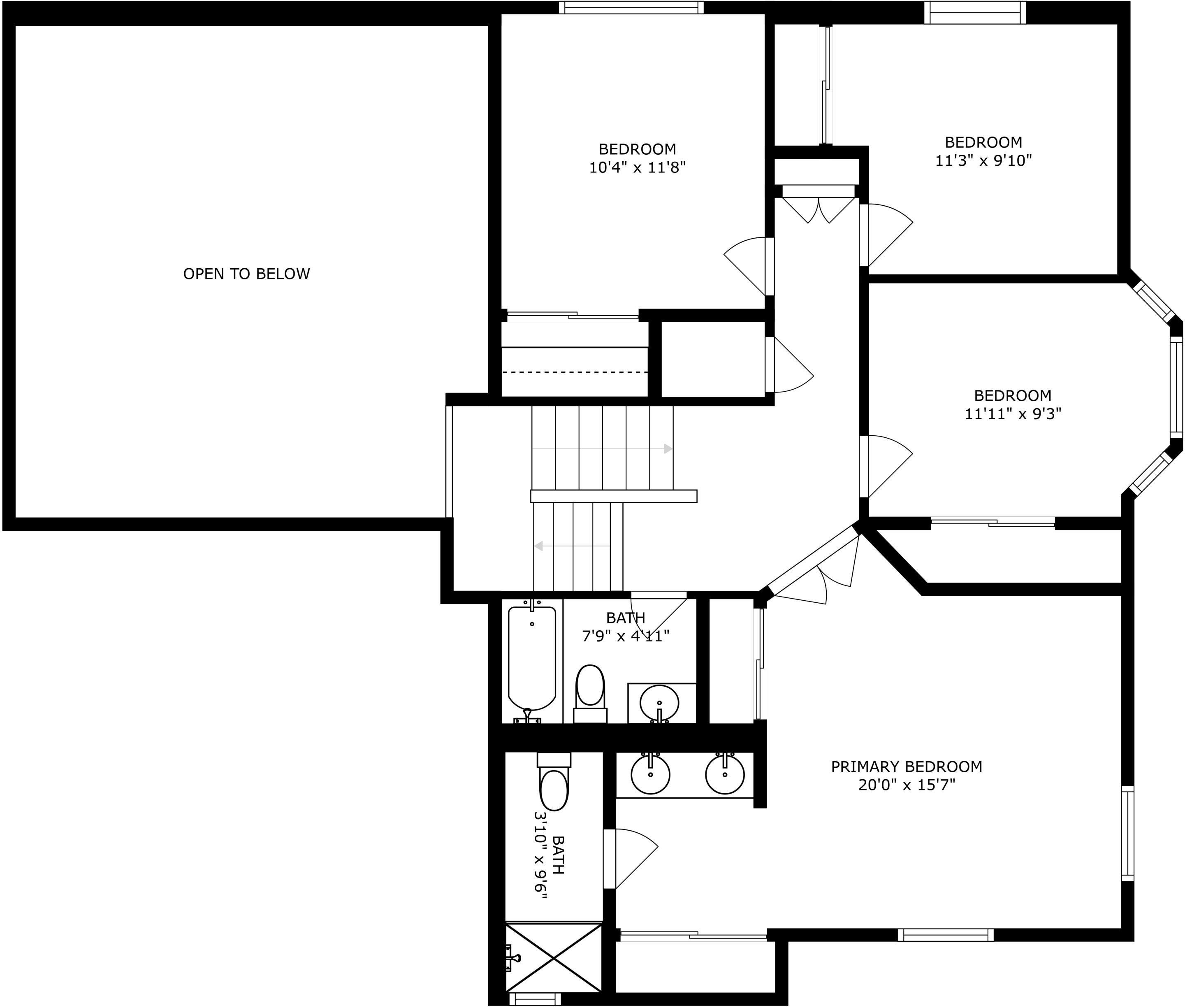




FLOOR 1



FLOOR 2



OPEN TO BELOW

BEDROOM
10'4" x 11'8"

BEDROOM
11'3" x 9'10"

BEDROOM
11'11" x 9'3"

BATH
7'9" x 4'11"

BATH
3'10" x 9'6"

PRIMARY BEDROOM
20'0" x 15'7"

SIZES AND DIMENSIONS ARE APPROXIMATE, ACTUAL MAY VARY.



SIZES AND DIMENSIONS ARE APPROXIMATE, ACTUAL MAY VARY.