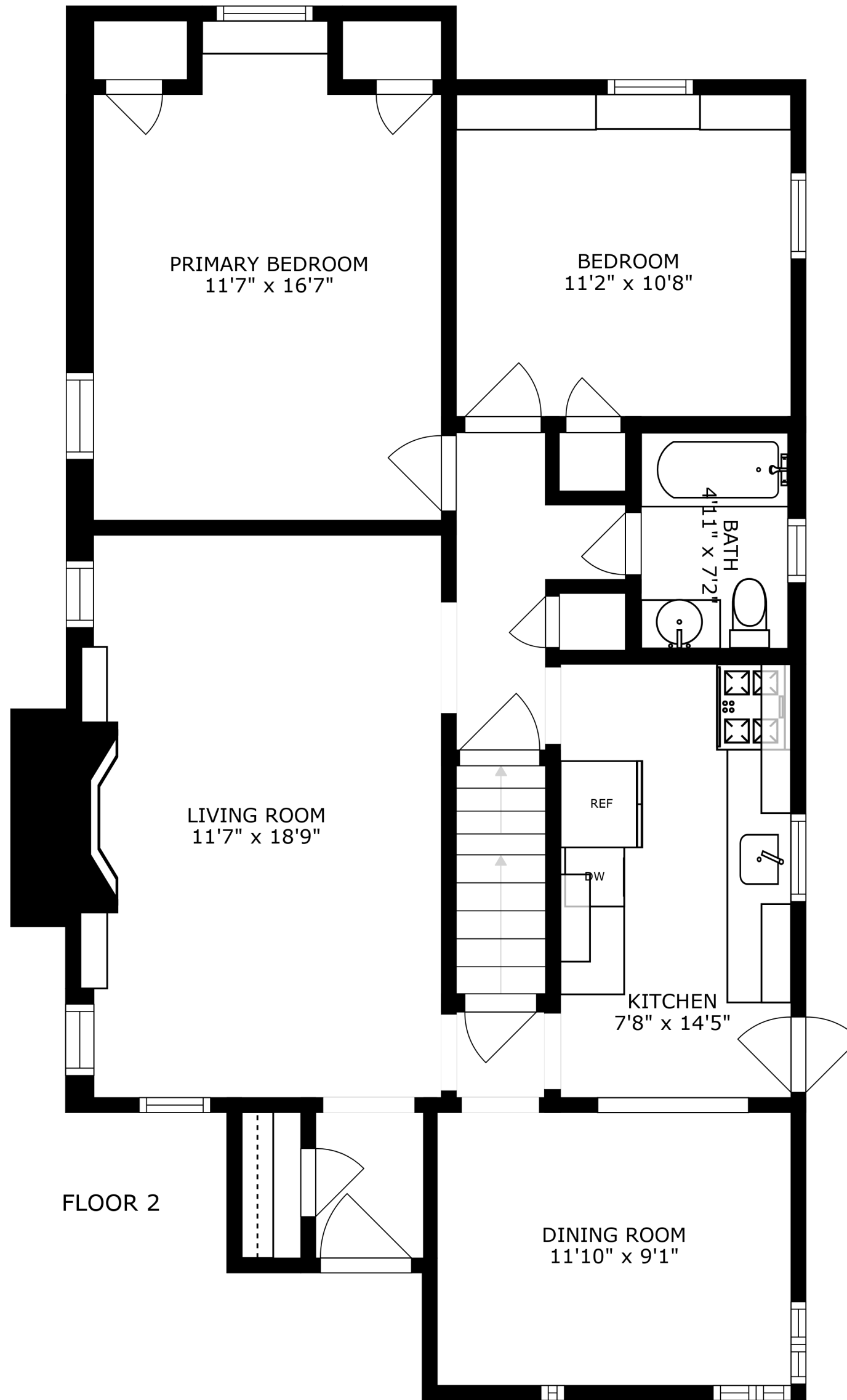


BASEMENT
23'3" x 33'6"

FLOOR 1



PRIMARY BEDROOM
11'7" x 16'7"

BEDROOM
11'2" x 10'8"

LIVING ROOM
11'7" x 18'9"

BATH
4'11" x 7'2"

KITCHEN
7'8" x 14'5"

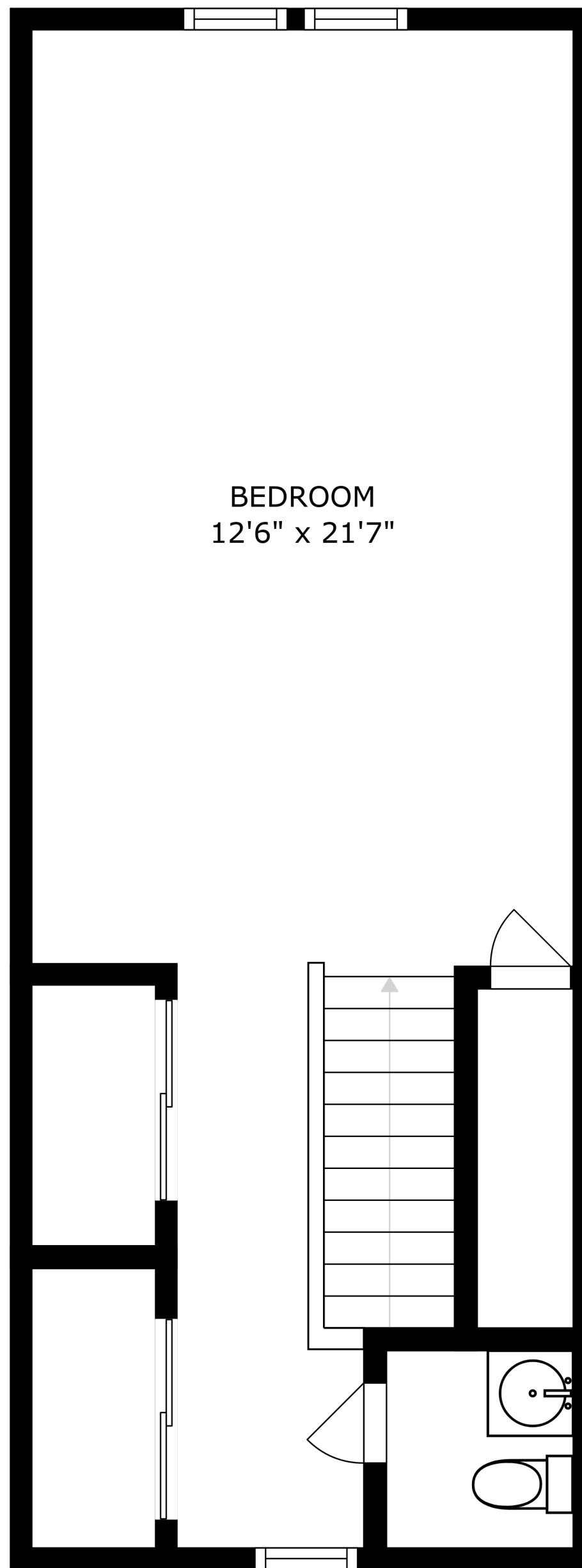
DINING ROOM
11'10" x 9'1"

FLOOR 2

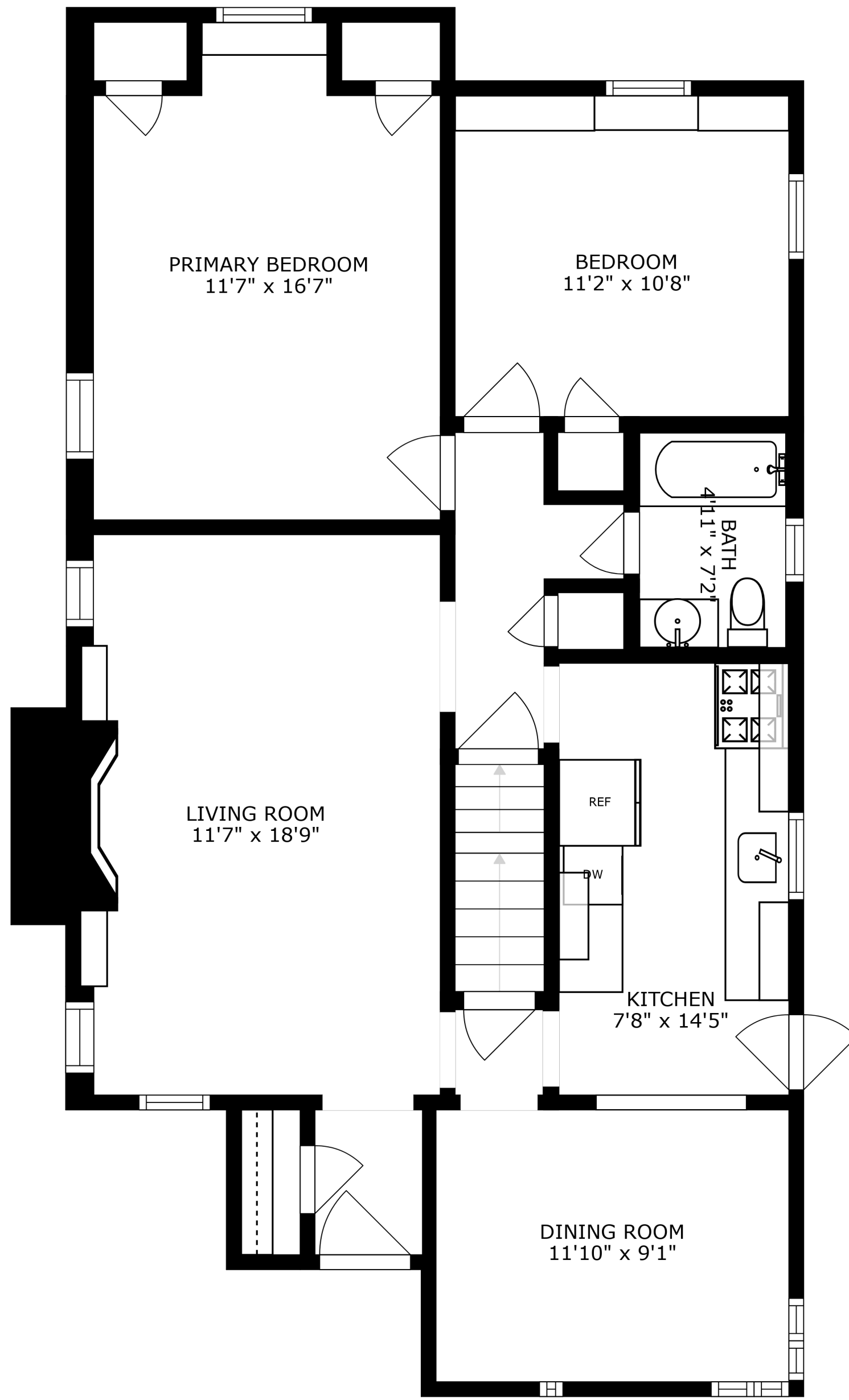


BEDROOM
12'6" x 21'7"

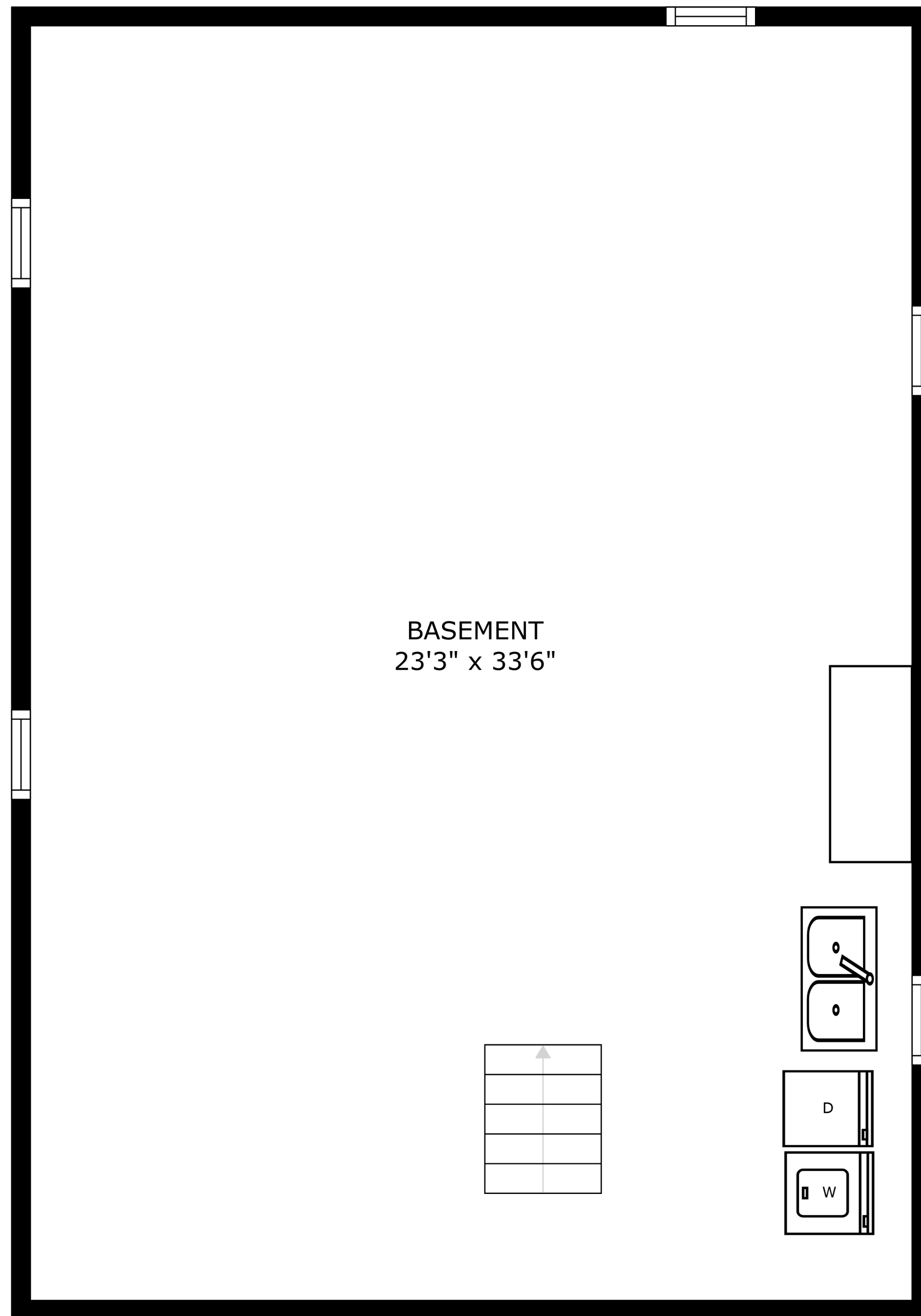
FLOOR 3



BEDROOM
12'6" x 21'7"



SIZES AND DIMENSIONS ARE APPROXIMATE, ACTUAL MAY VARY.



BASEMENT
23'3" x 33'6"

SIZES AND DIMENSIONS ARE APPROXIMATE, ACTUAL MAY VARY.