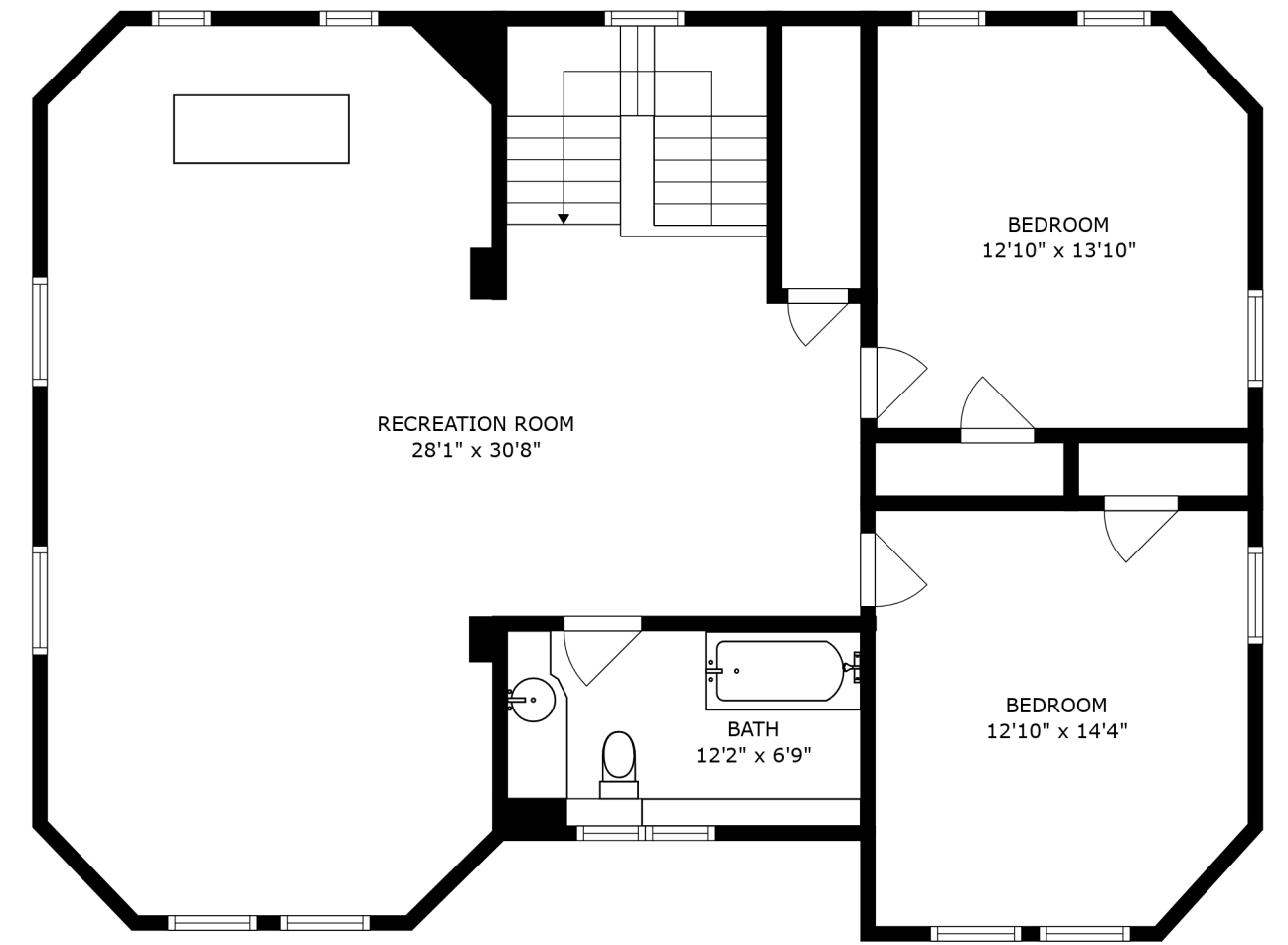
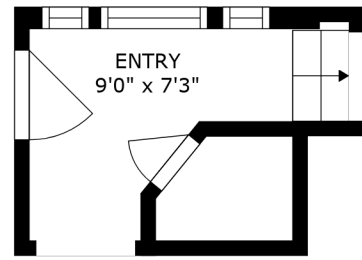


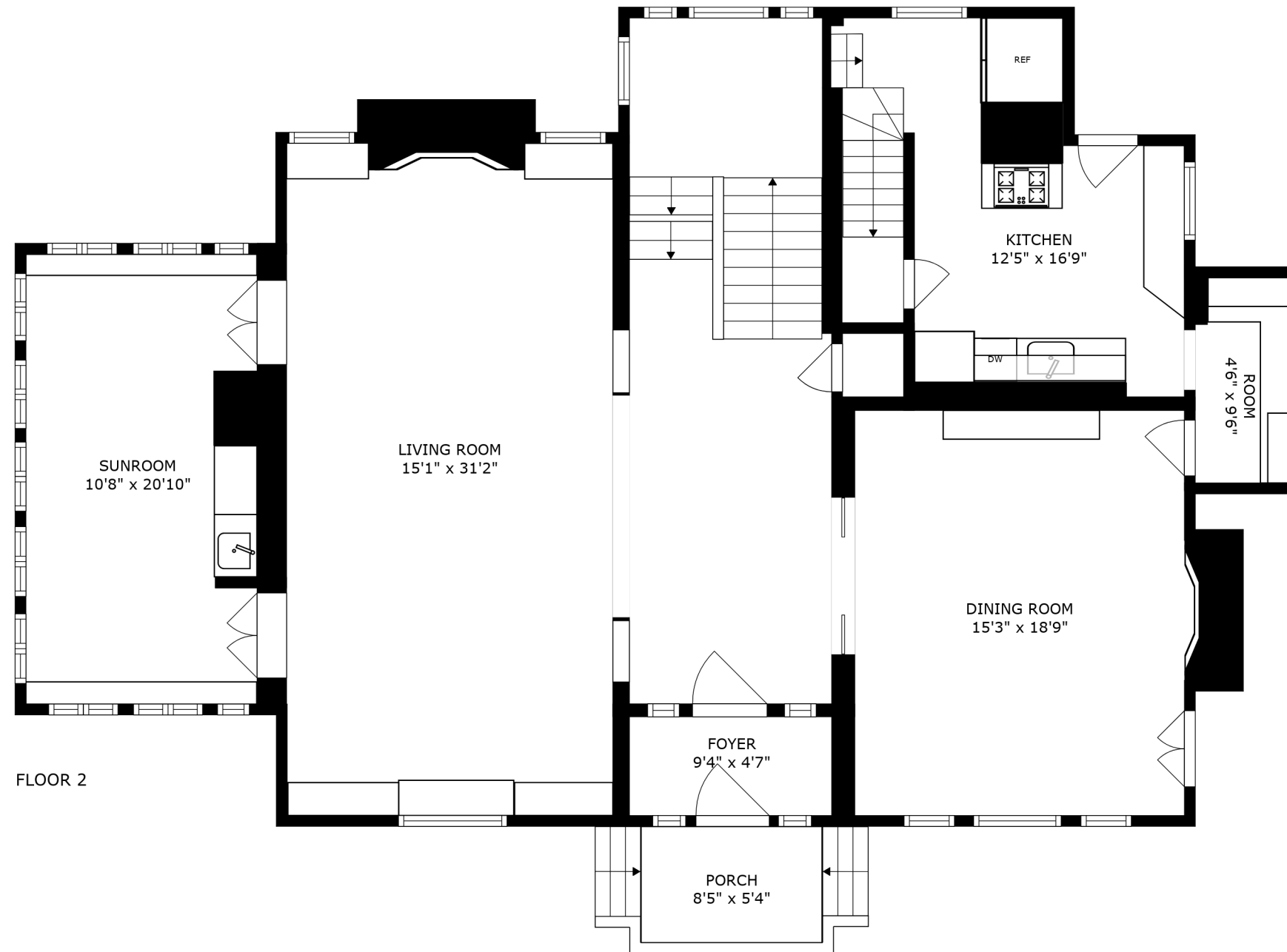
FLOOR 3



FLOOR 4

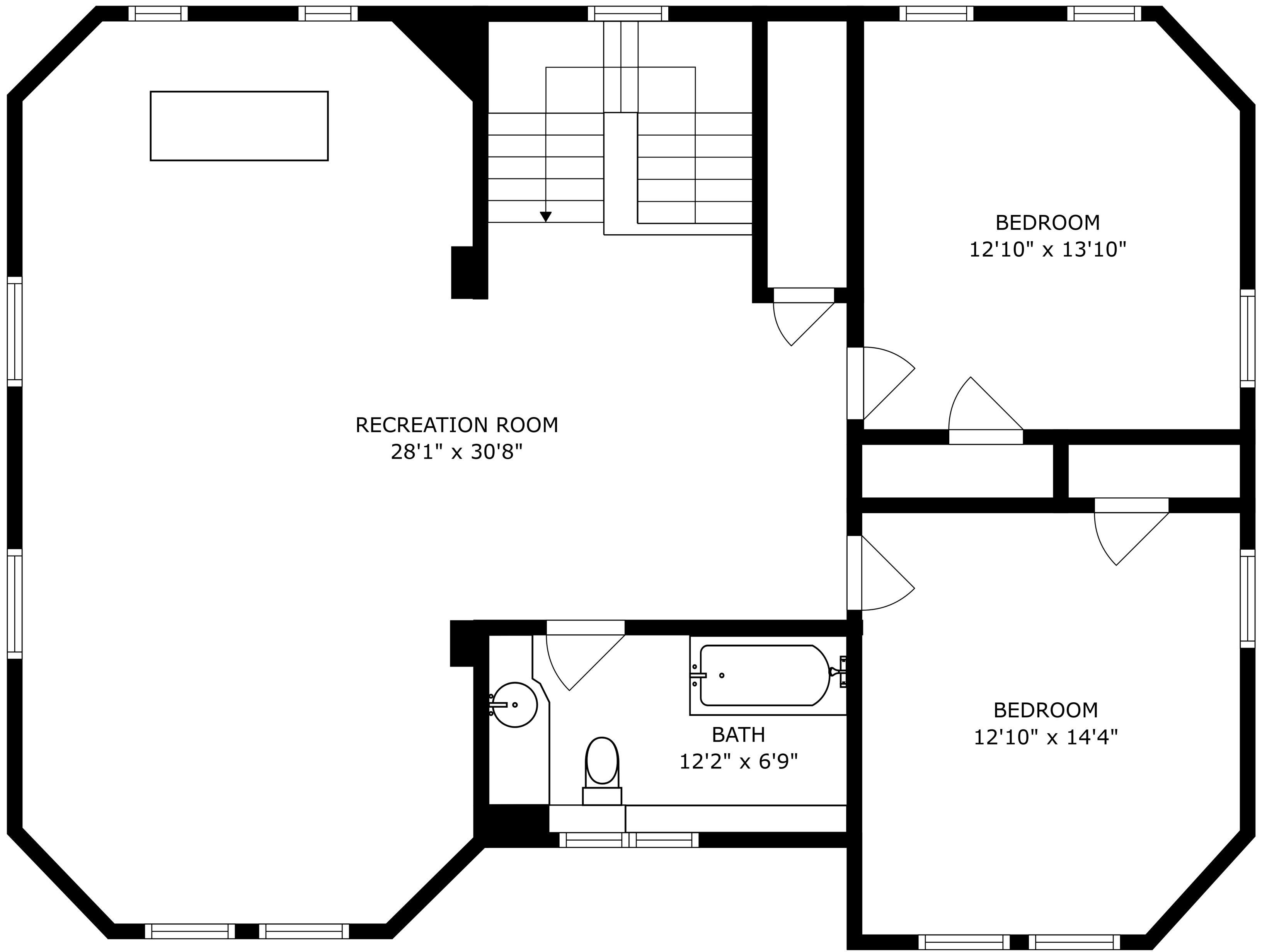


FLOOR 1



FLOOR 2

SIZES AND DIMENSIONS ARE APPROXIMATE, ACTUAL MAY VARY.

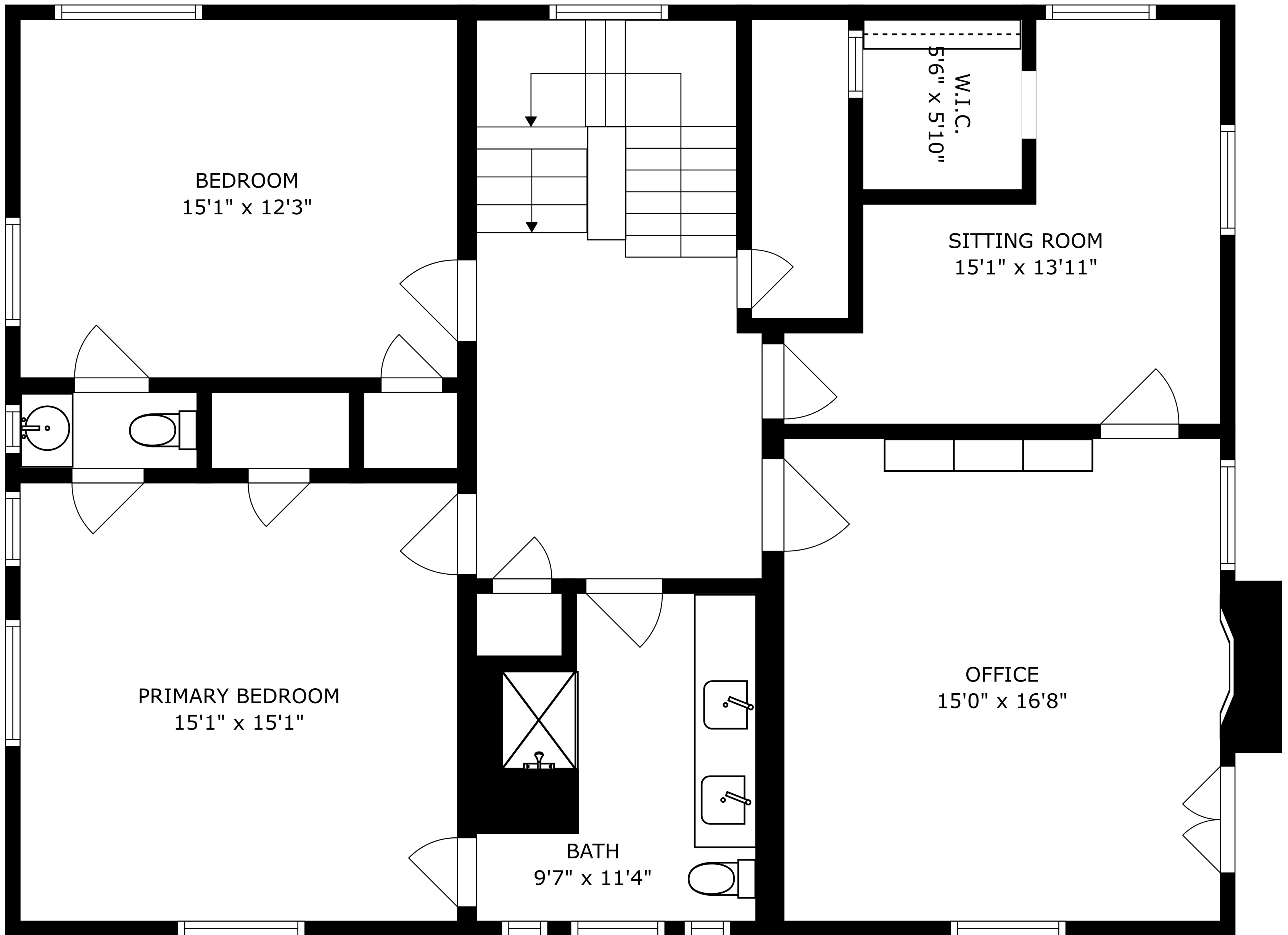


RECREATION ROOM
28'1" x 30'8"

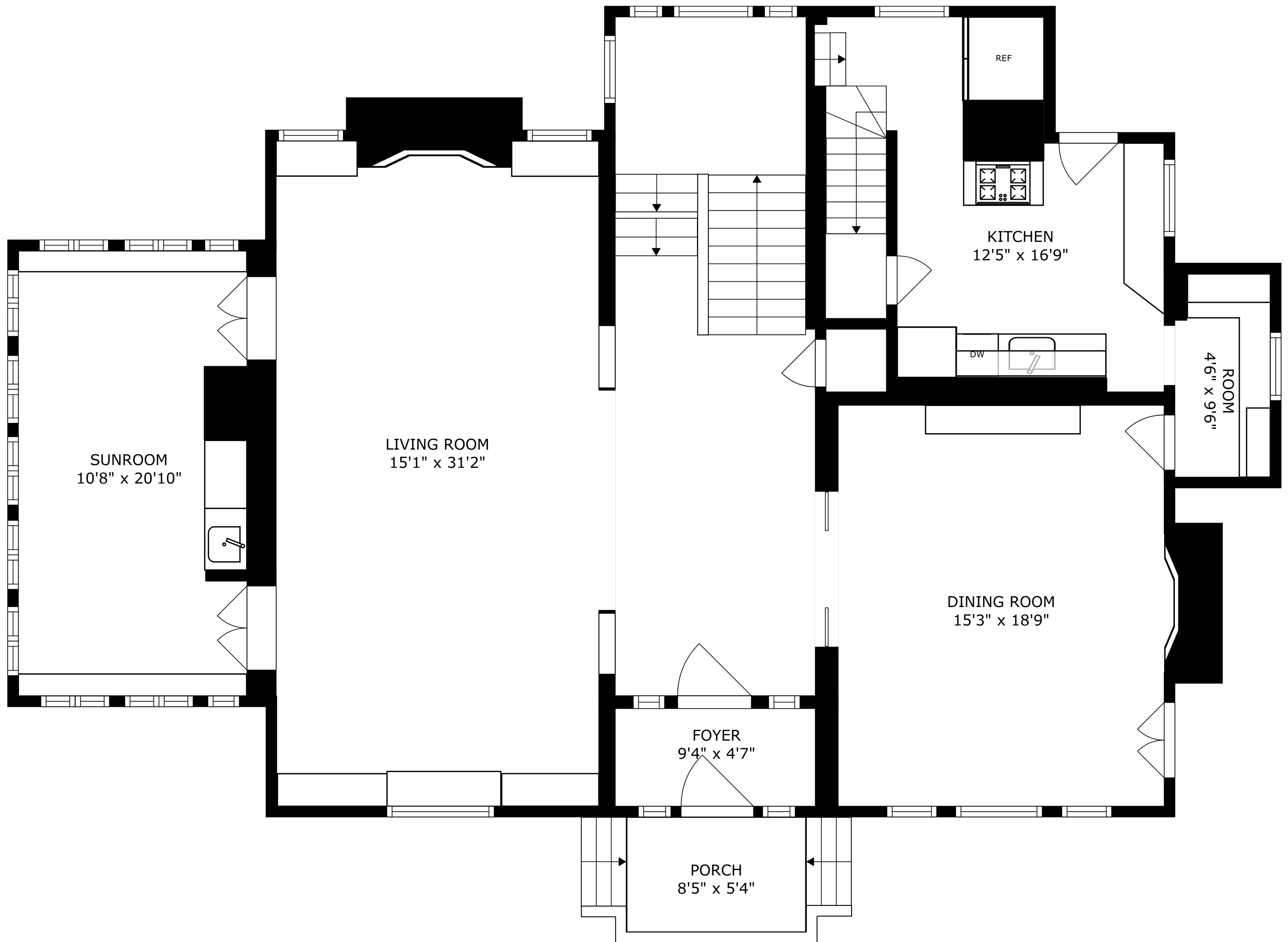
BEDROOM
12'10" x 13'10"

BATH
12'2" x 6'9"

BEDROOM
12'10" x 14'4"



SIZES AND DIMENSIONS ARE APPROXIMATE, ACTUAL MAY VARY.



SIZES AND DIMENSIONS ARE APPROXIMATE, ACTUAL MAY VARY.

ENTRY
9'0" x 7'3"

The diagram shows a floor plan of an entry area. The entry is a rectangular space measuring 9'0" by 7'3". A door is located on the left side, swinging inward. To the right of the entry, there is a hallway or another room with a door that swings outward, indicated by an arrow. The walls are represented by thick black lines. There are also some rectangular shapes at the top of the plan, possibly representing windows or other architectural features.