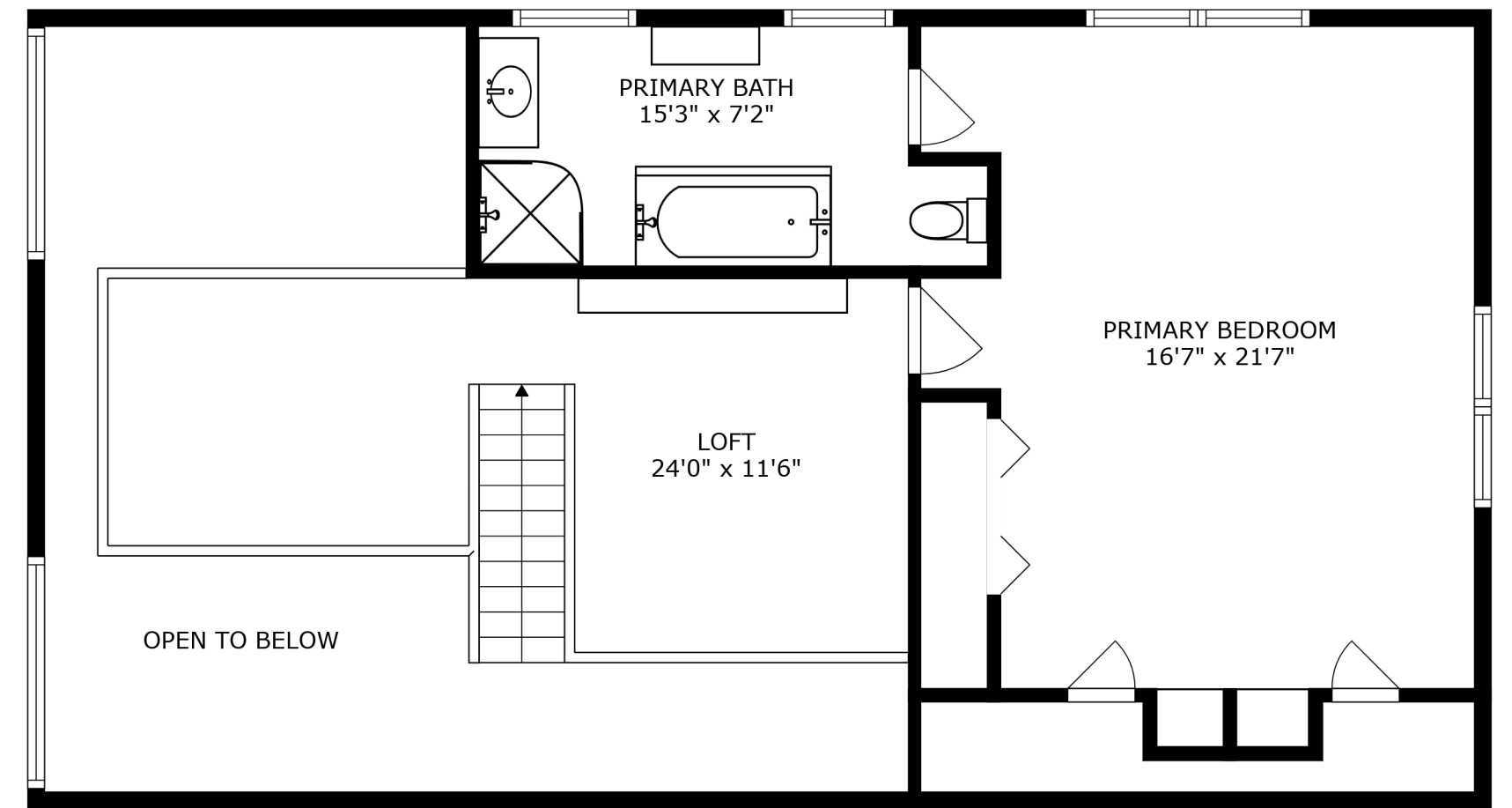
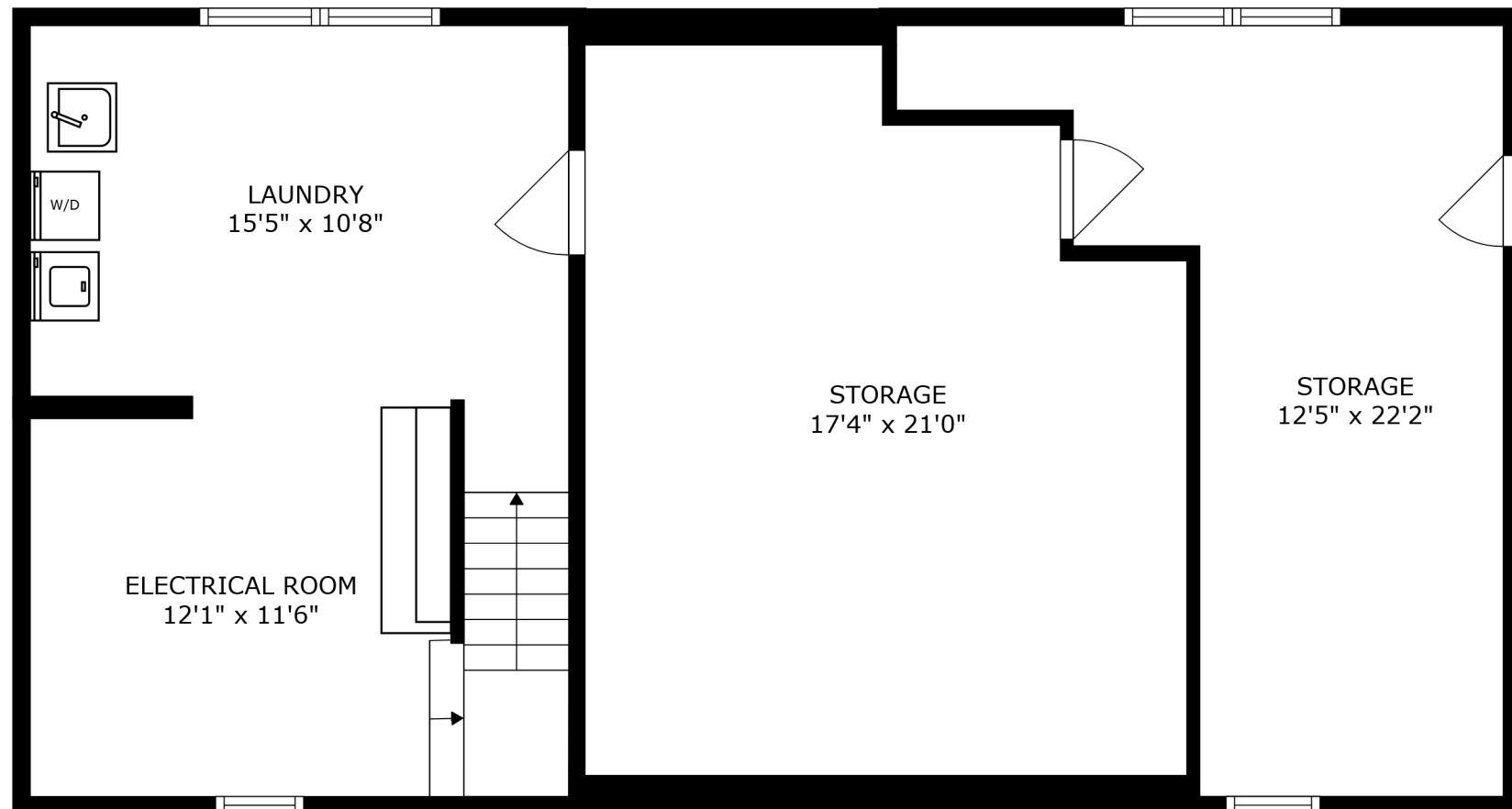


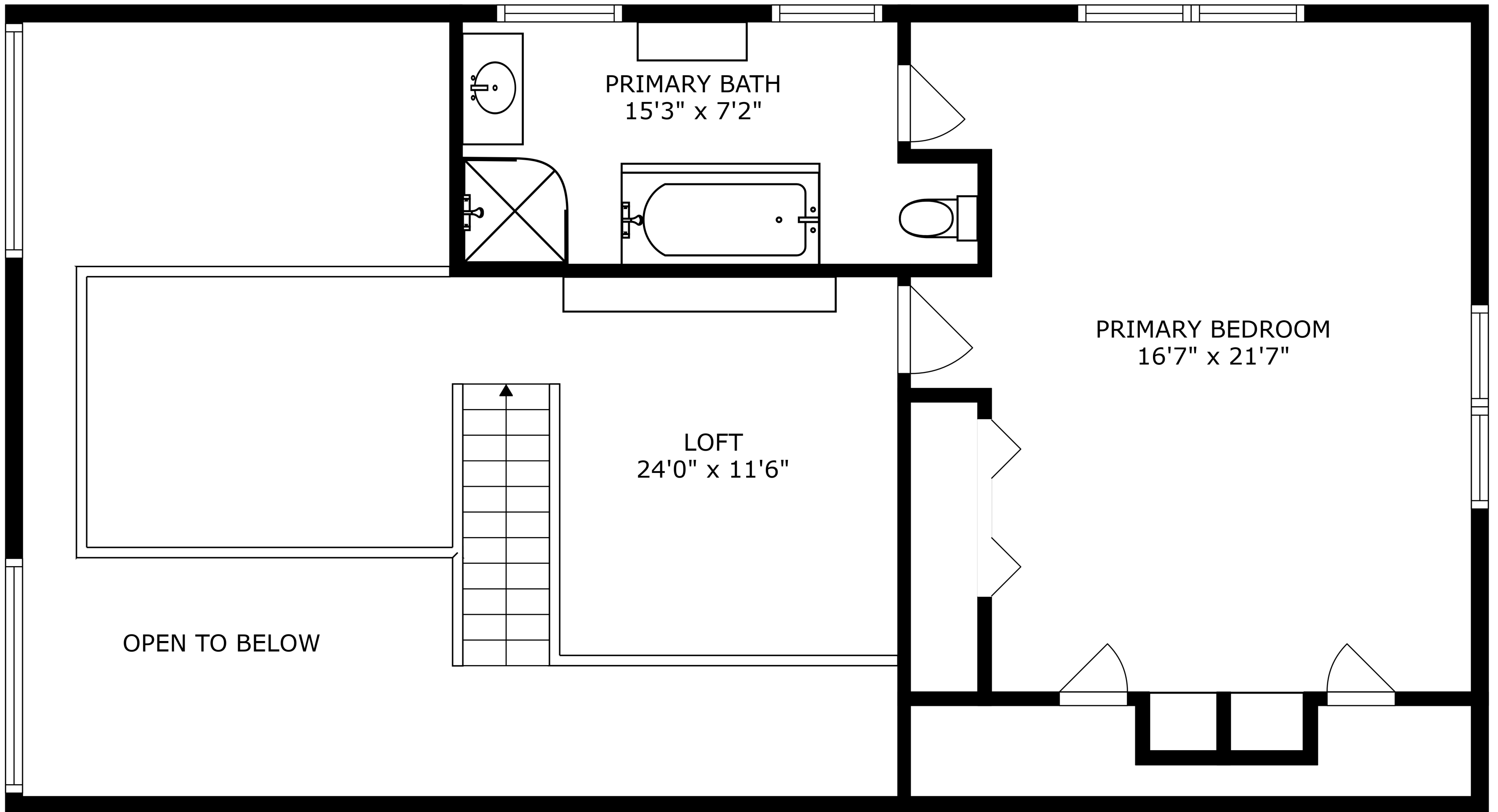
FLOOR 2



FLOOR 3



FLOOR 1

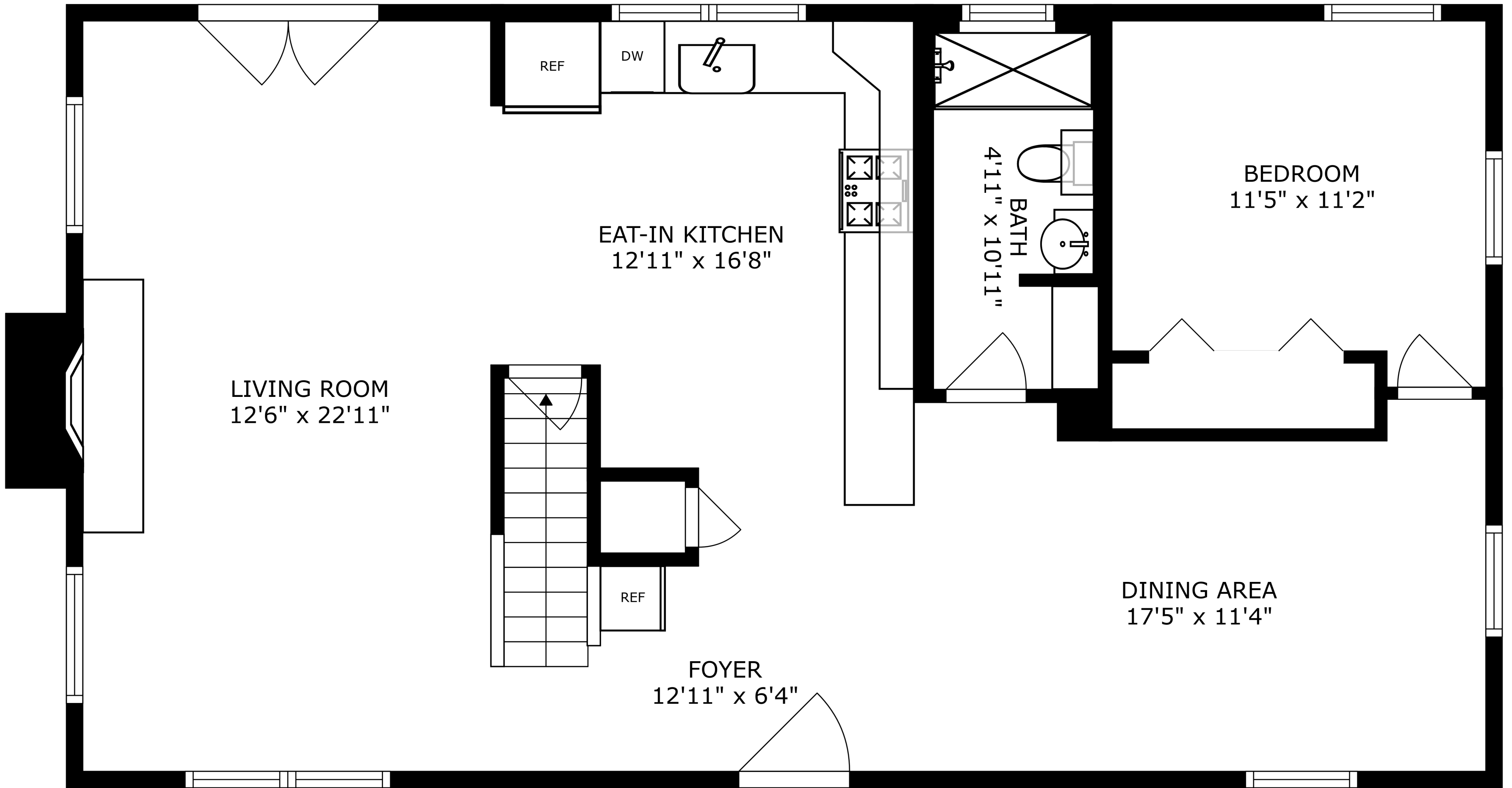


OPEN TO BELOW

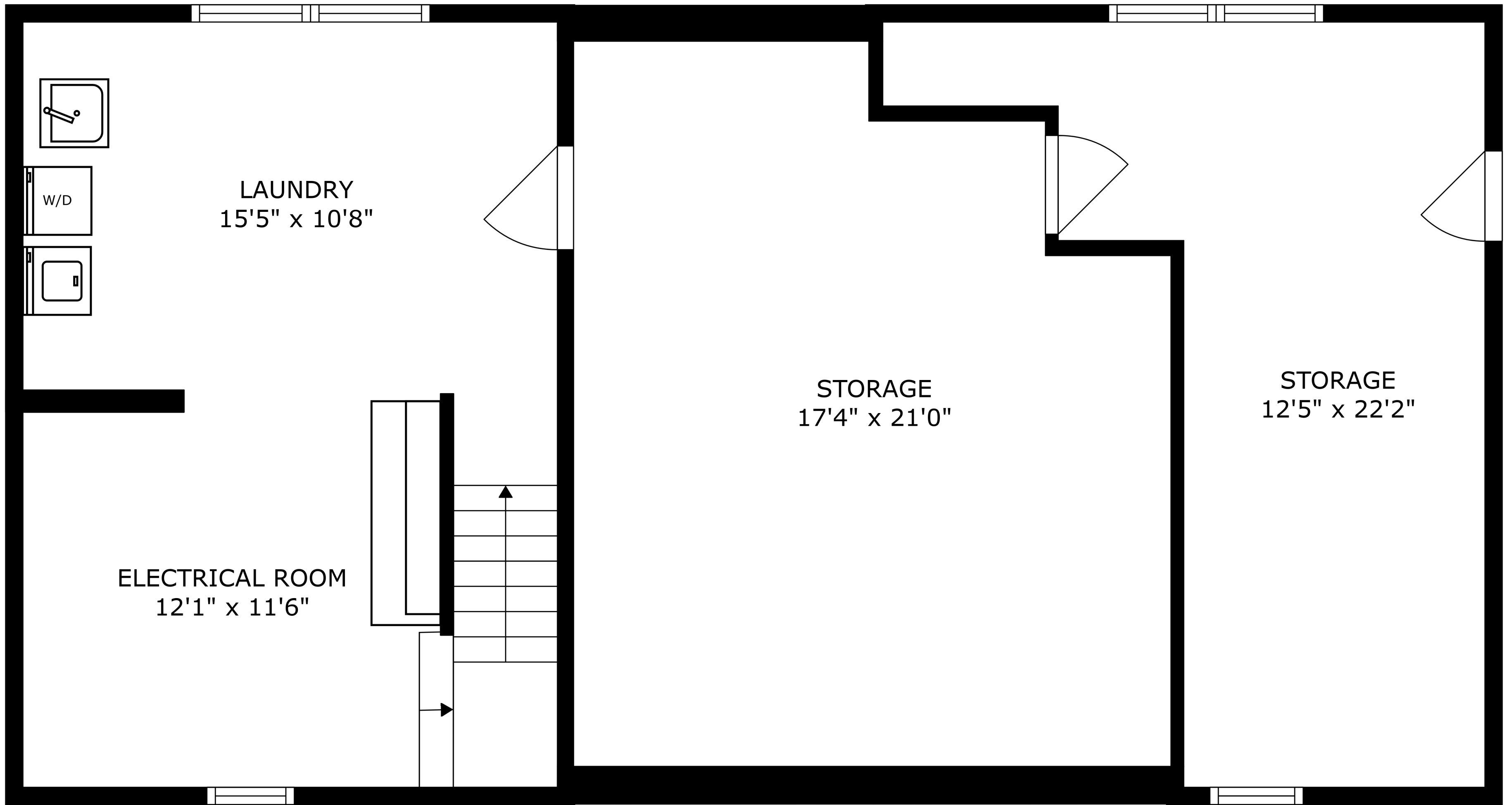
PRIMARY BATH
15'3" x 7'2"

LOFT
24'0" x 11'6"

PRIMARY BEDROOM
16'7" x 21'7"



SIZES AND DIMENSIONS ARE APPROXIMATE, ACTUAL MAY VARY.



SIZES AND DIMENSIONS ARE APPROXIMATE, ACTUAL MAY VARY.