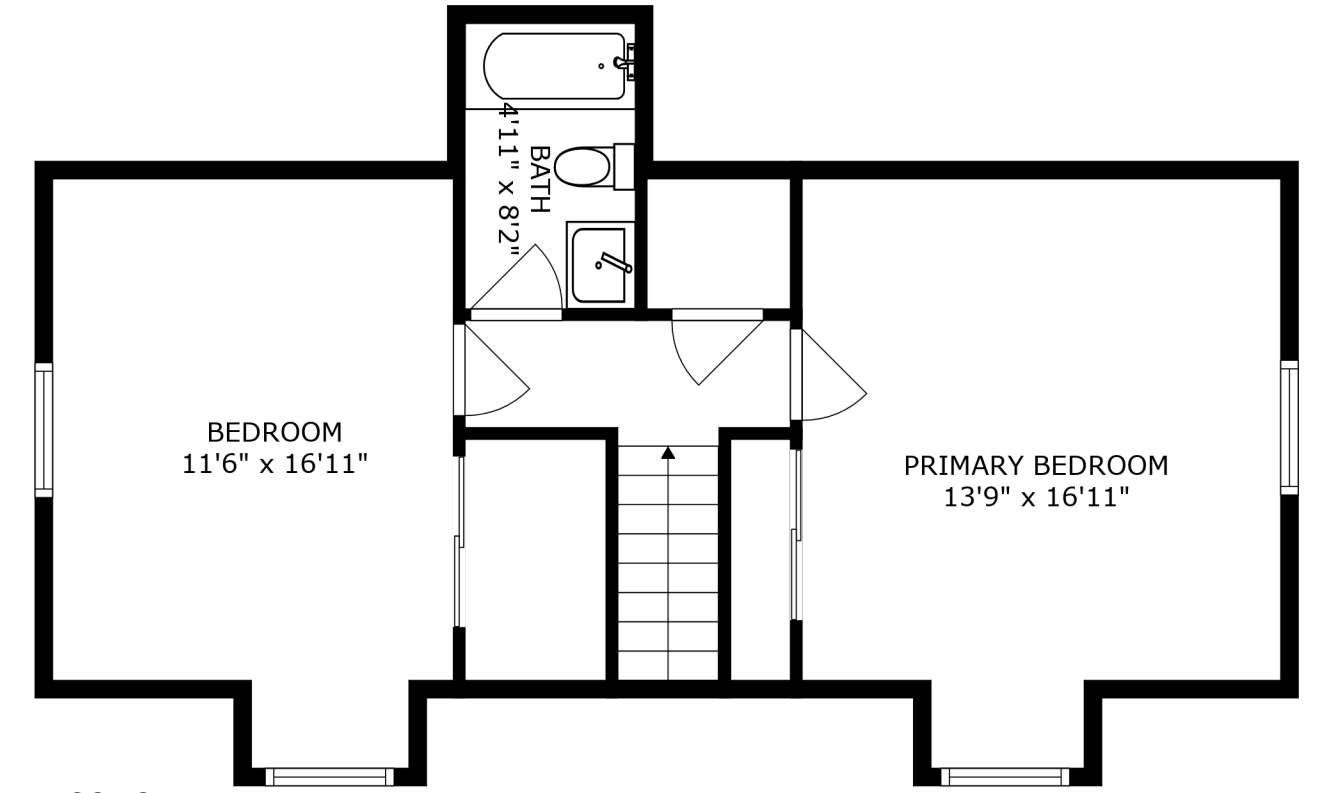
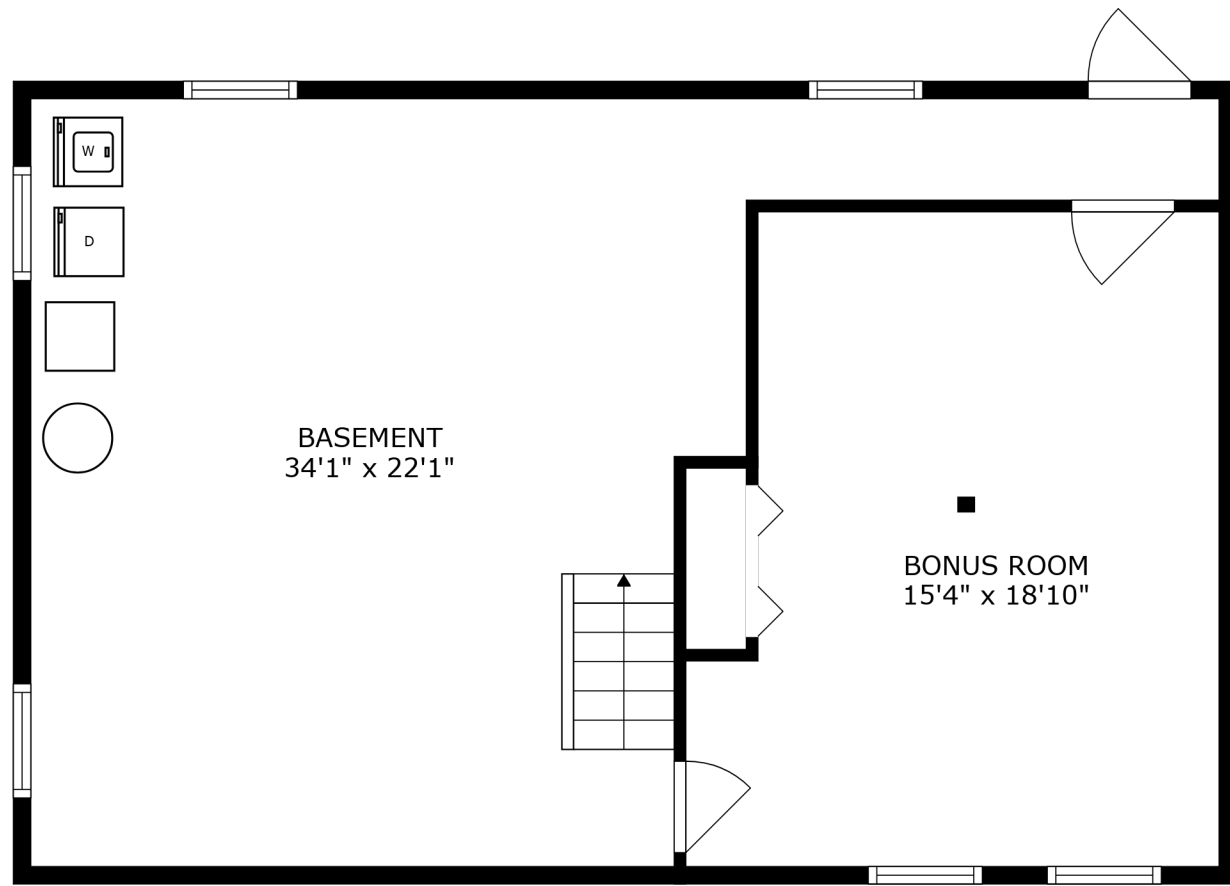


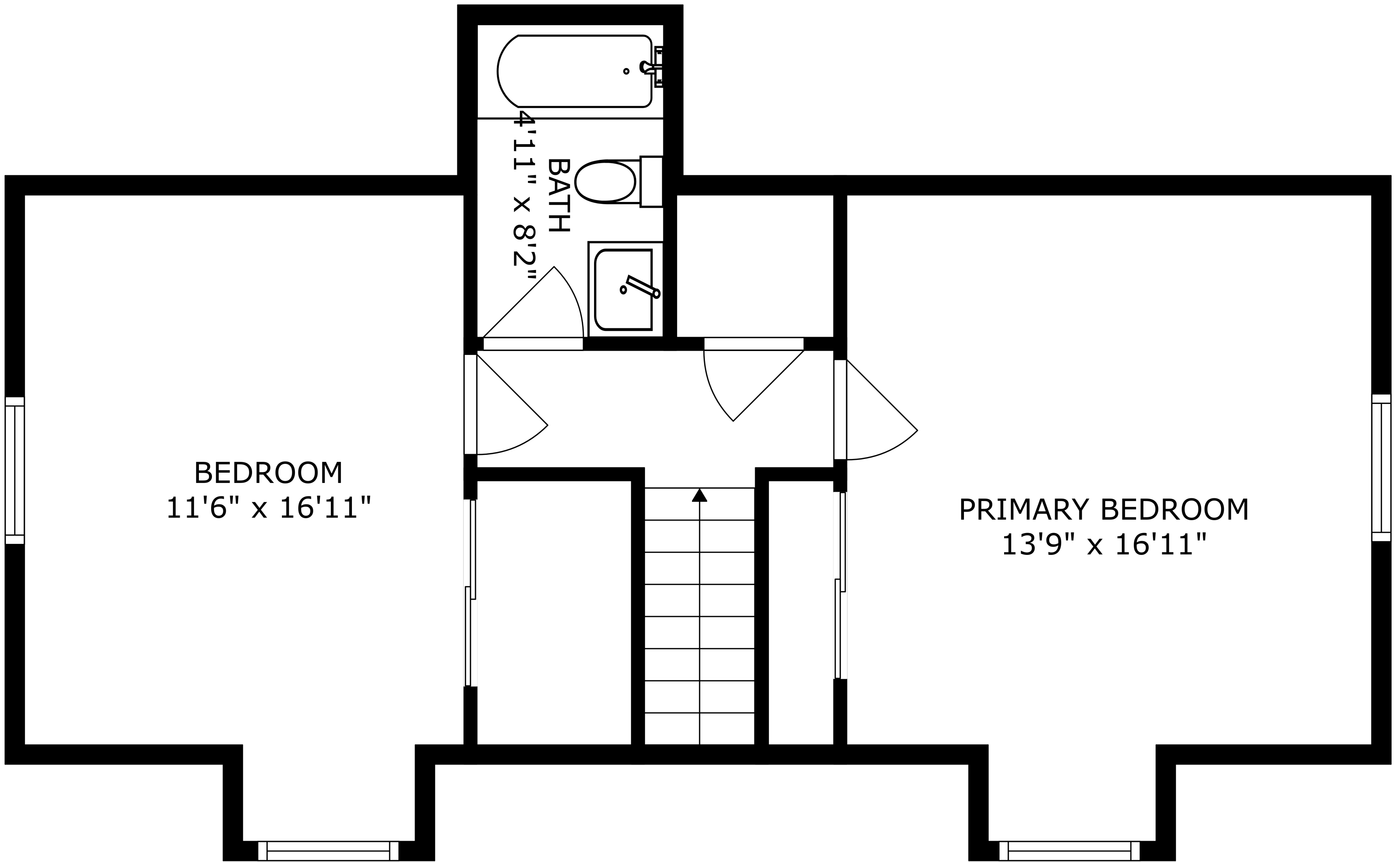
FLOOR 1



FLOOR 2



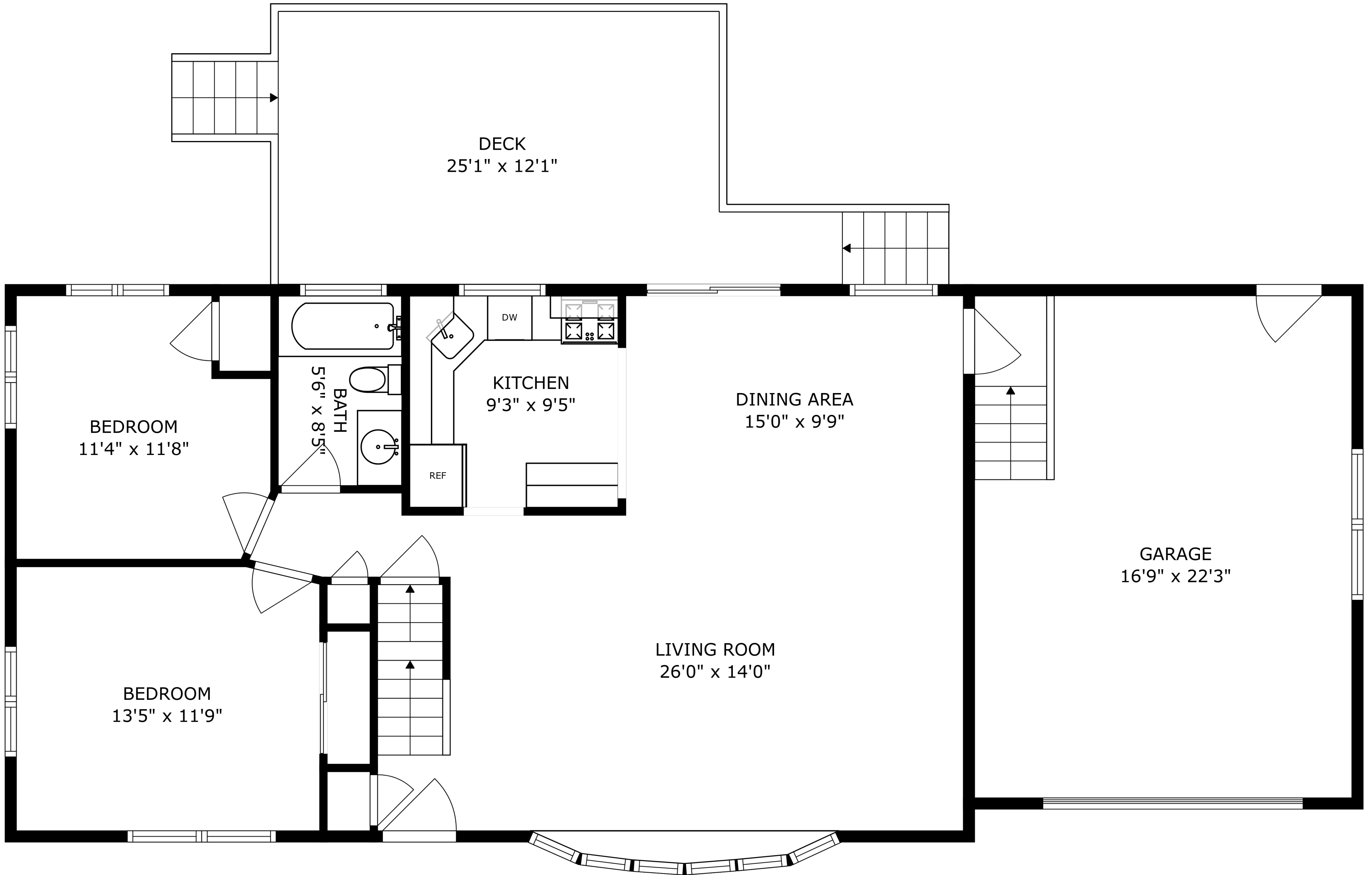
BASEMENT



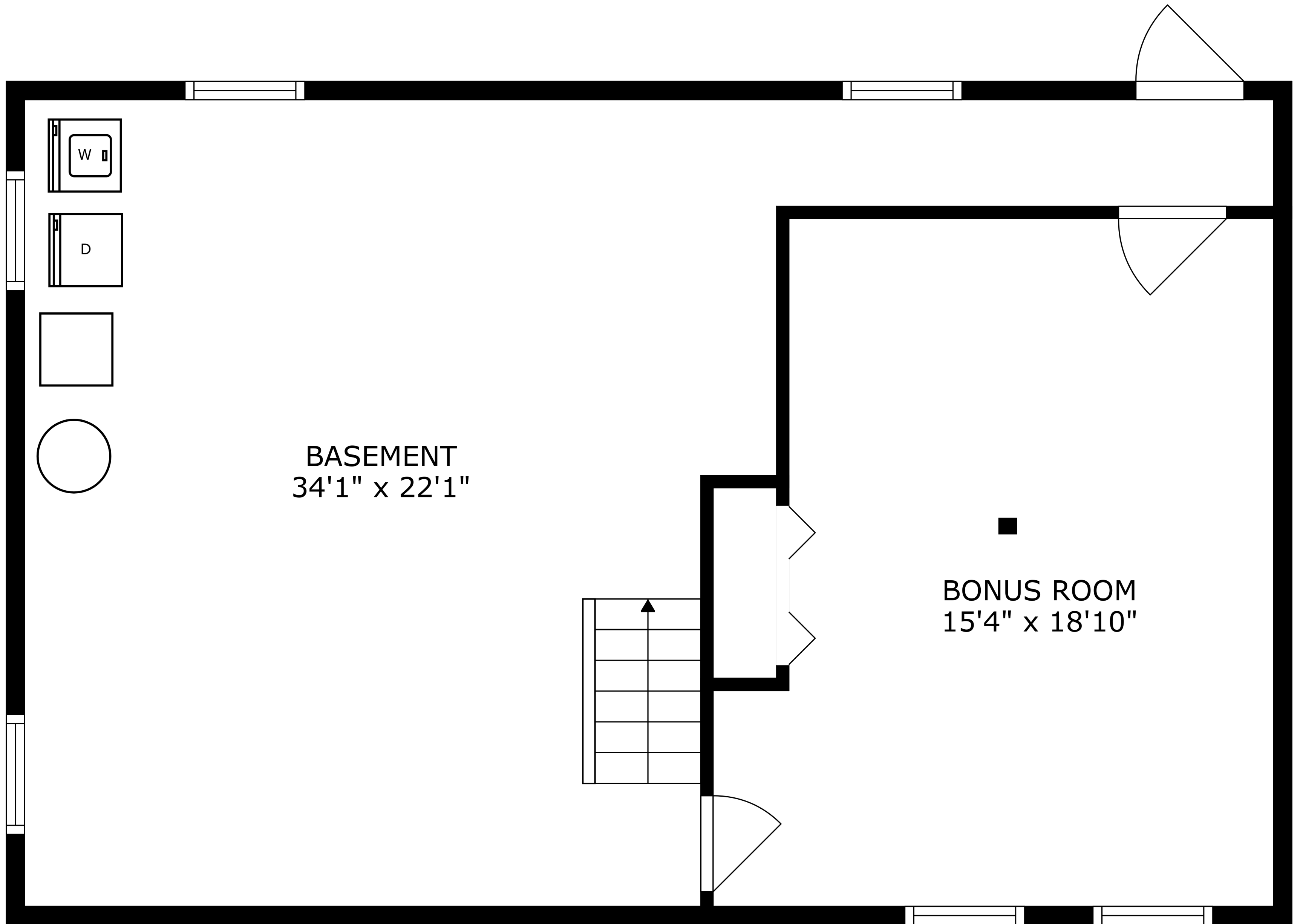
BEDROOM  
11'6" x 16'11"

BATH  
4'11" x 8'2"

PRIMARY BEDROOM  
13'9" x 16'11"



SIZES AND DIMENSIONS ARE APPROXIMATE, ACTUAL MAY VARY.



BASEMENT  
34'1" x 22'1"

BONUS ROOM  
15'4" x 18'10"