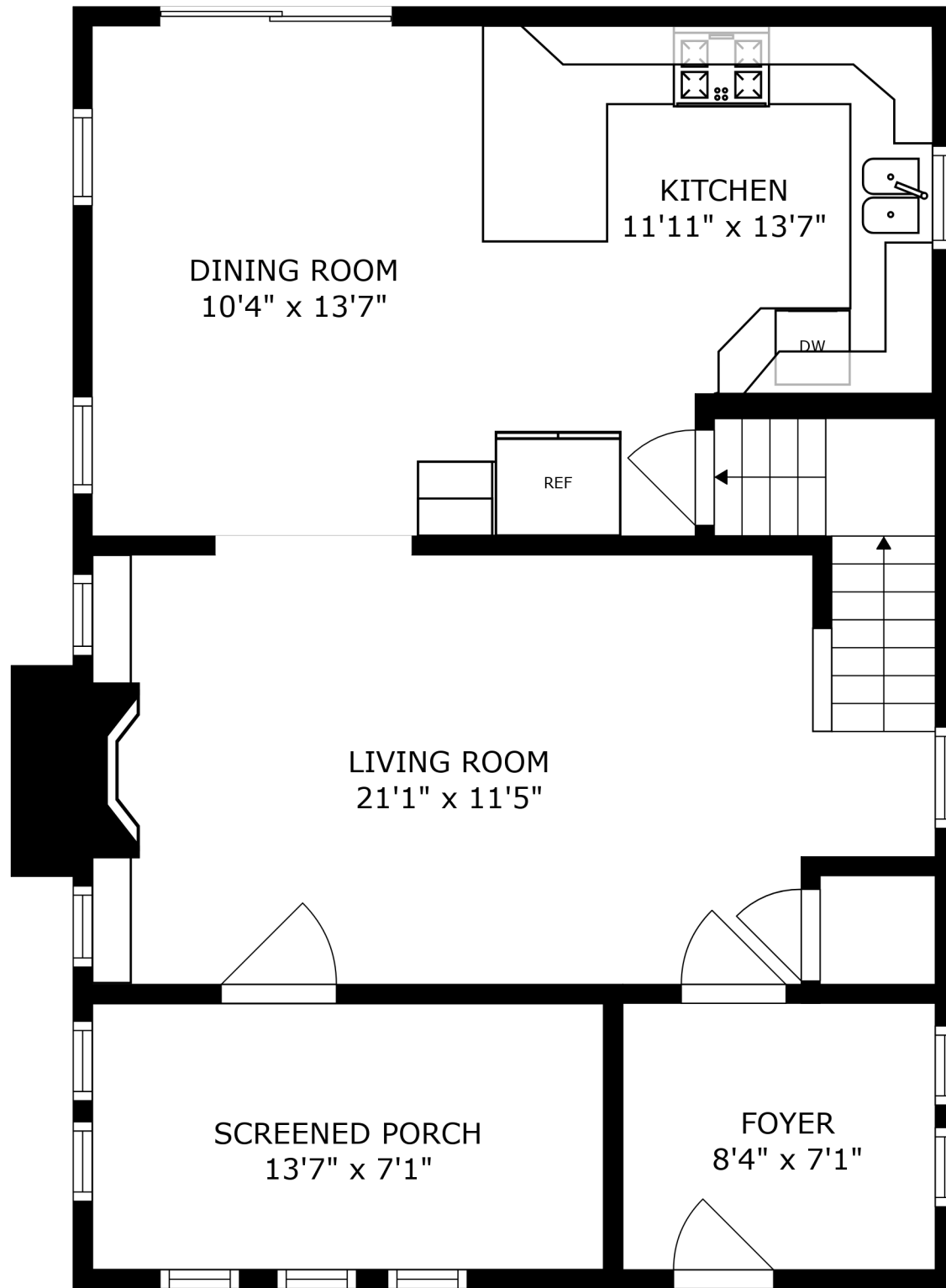


BASEMENT
22'3" x 24'11"

FLOOR 1



DINING ROOM
10'4" x 13'7"

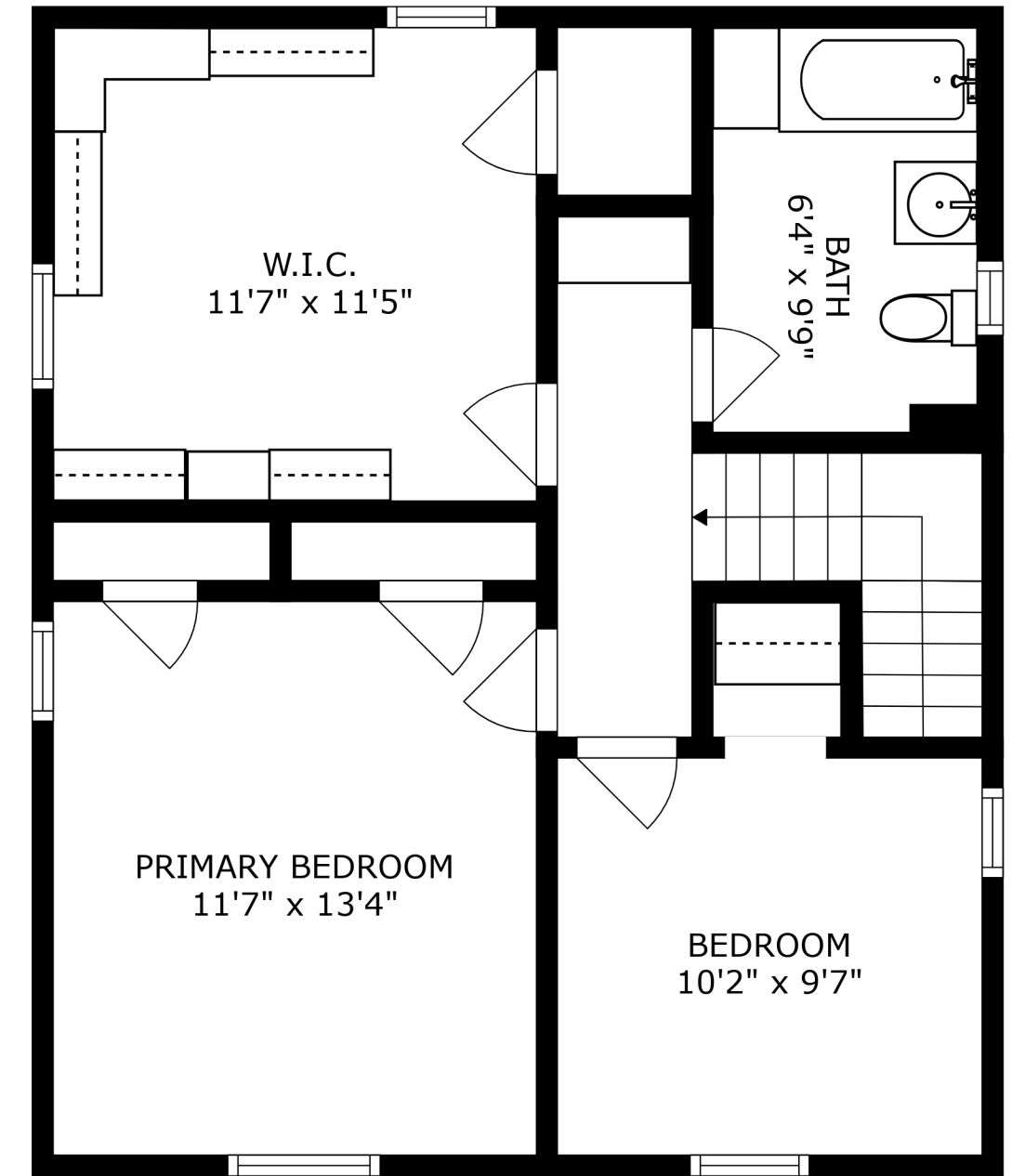
KITCHEN
11'11" x 13'7"

LIVING ROOM
21'1" x 11'5"

SCREENED PORCH
13'7" x 7'1"

FOYER
8'4" x 7'1"

FLOOR 2



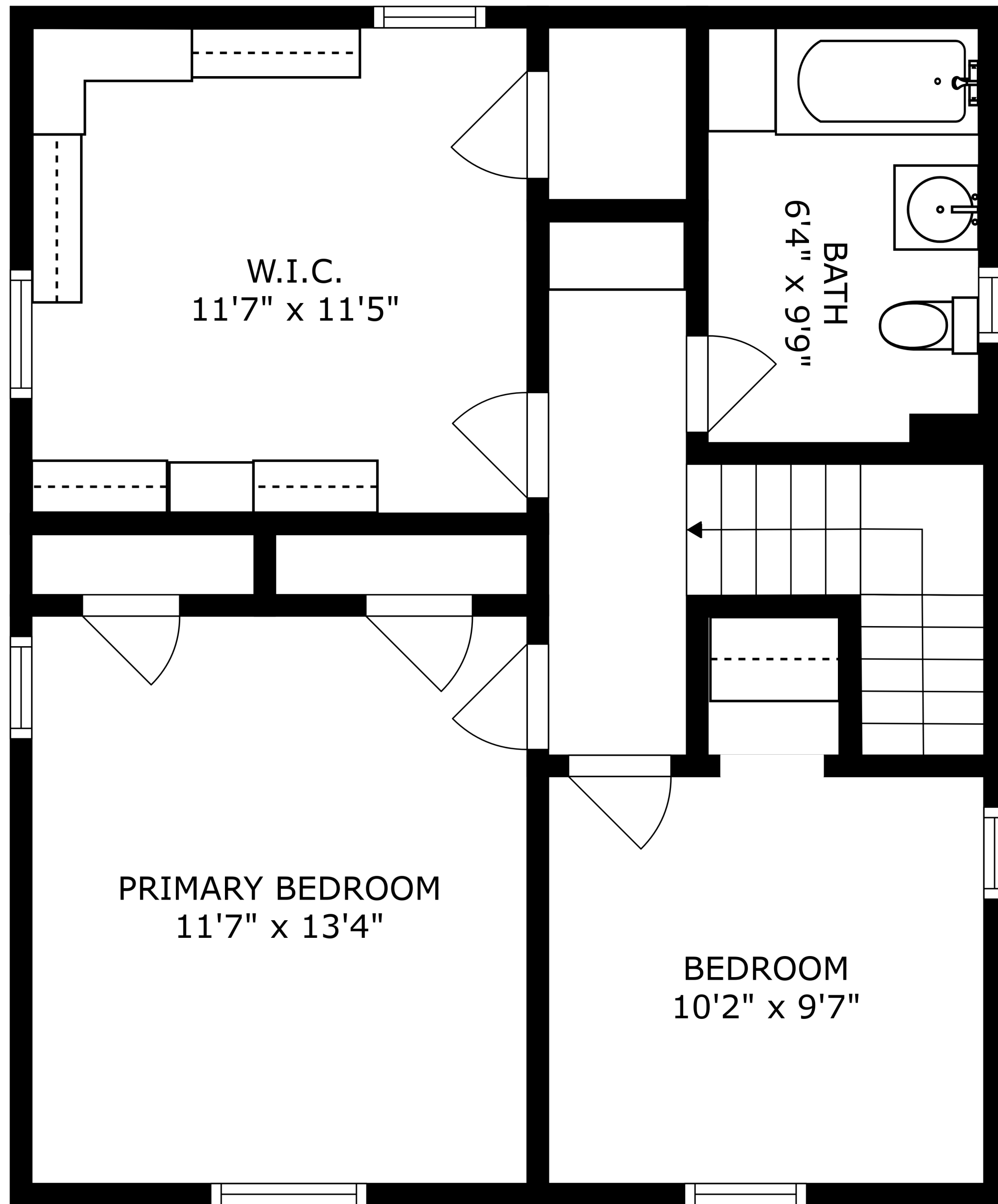
W.I.C.
11'7" x 11'5"

PRIMARY BEDROOM
11'7" x 13'4"

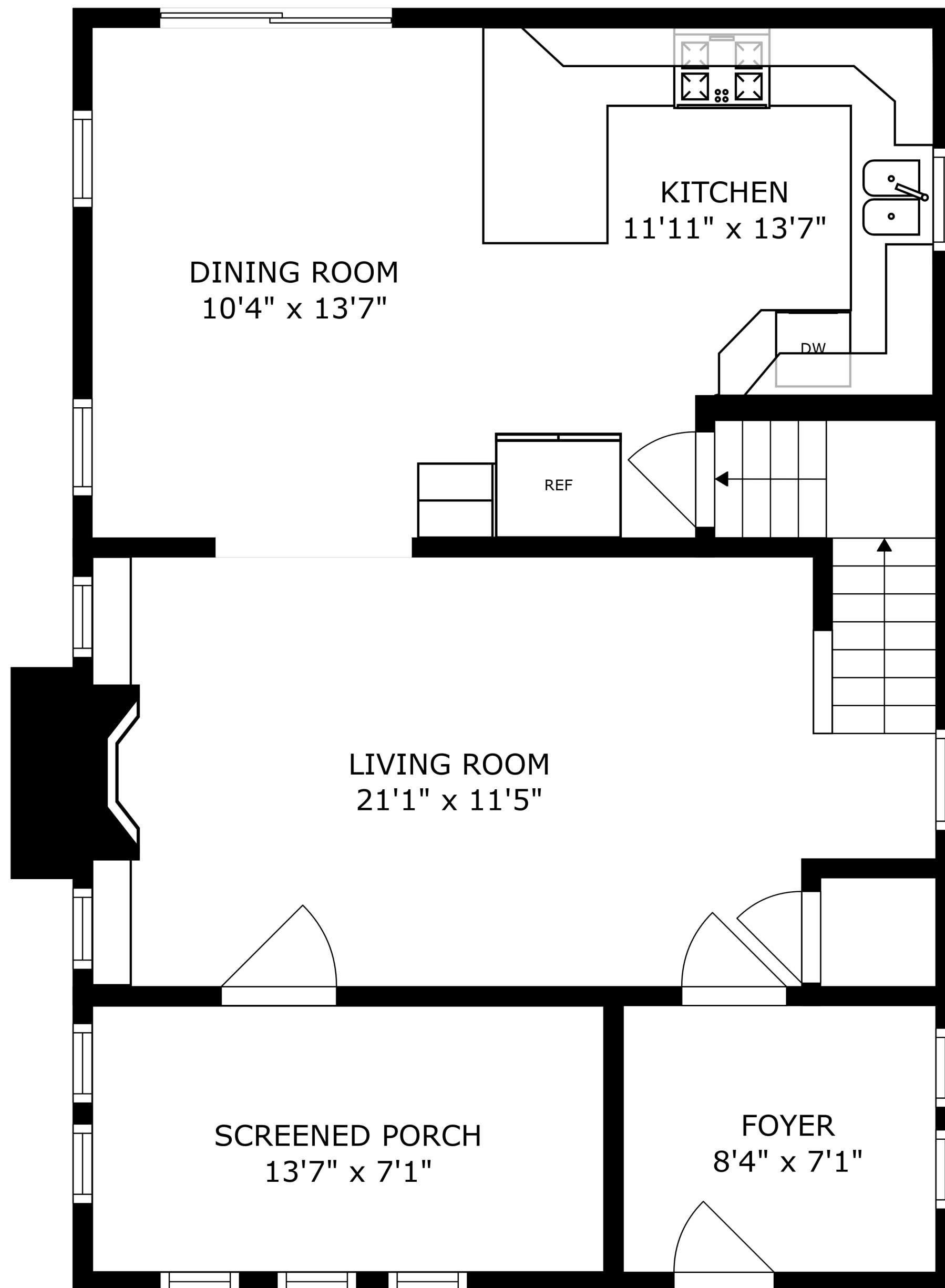
BEDROOM
10'2" x 9'7"

BATH
6'4" x 9'9"

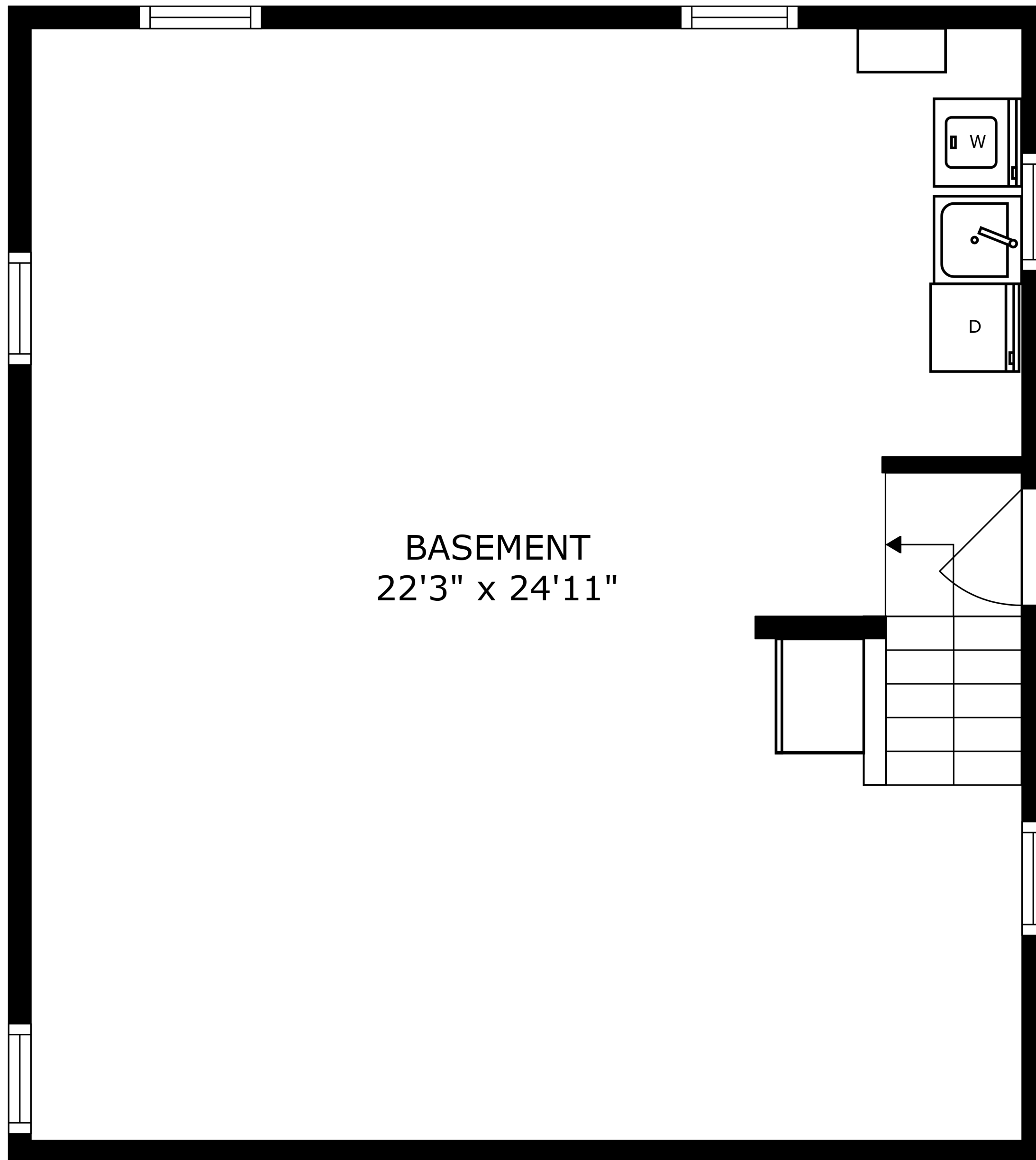
FLOOR 3



SIZES AND DIMENSIONS ARE APPROXIMATE, ACTUAL MAY VARY.



SIZES AND DIMENSIONS ARE APPROXIMATE, ACTUAL MAY VARY.



BASEMENT
22'3" x 24'11"