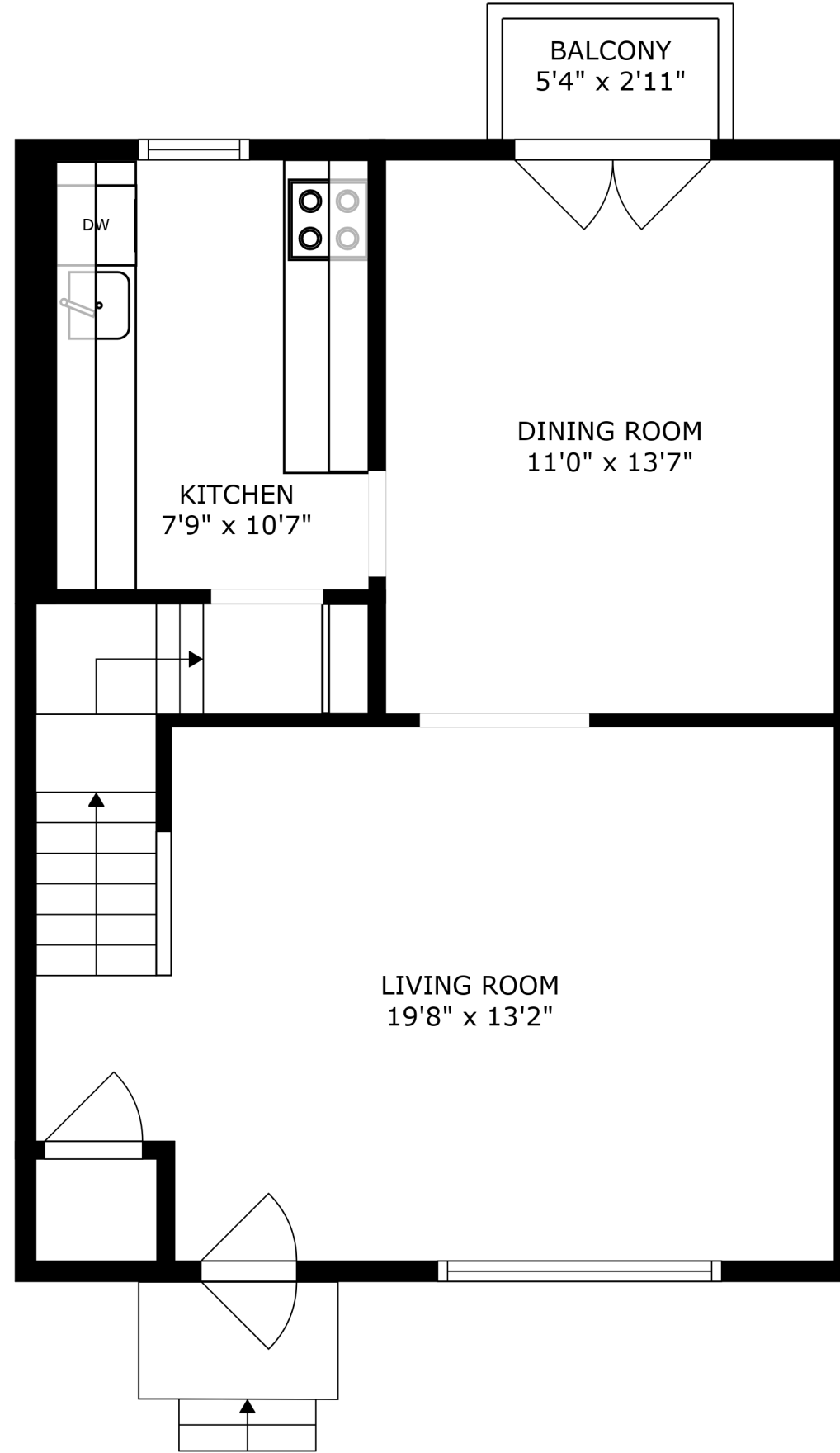


BASEMENT
9'11" x 22'6"

GARAGE
11'1" x 15'10"

FLOOR 1



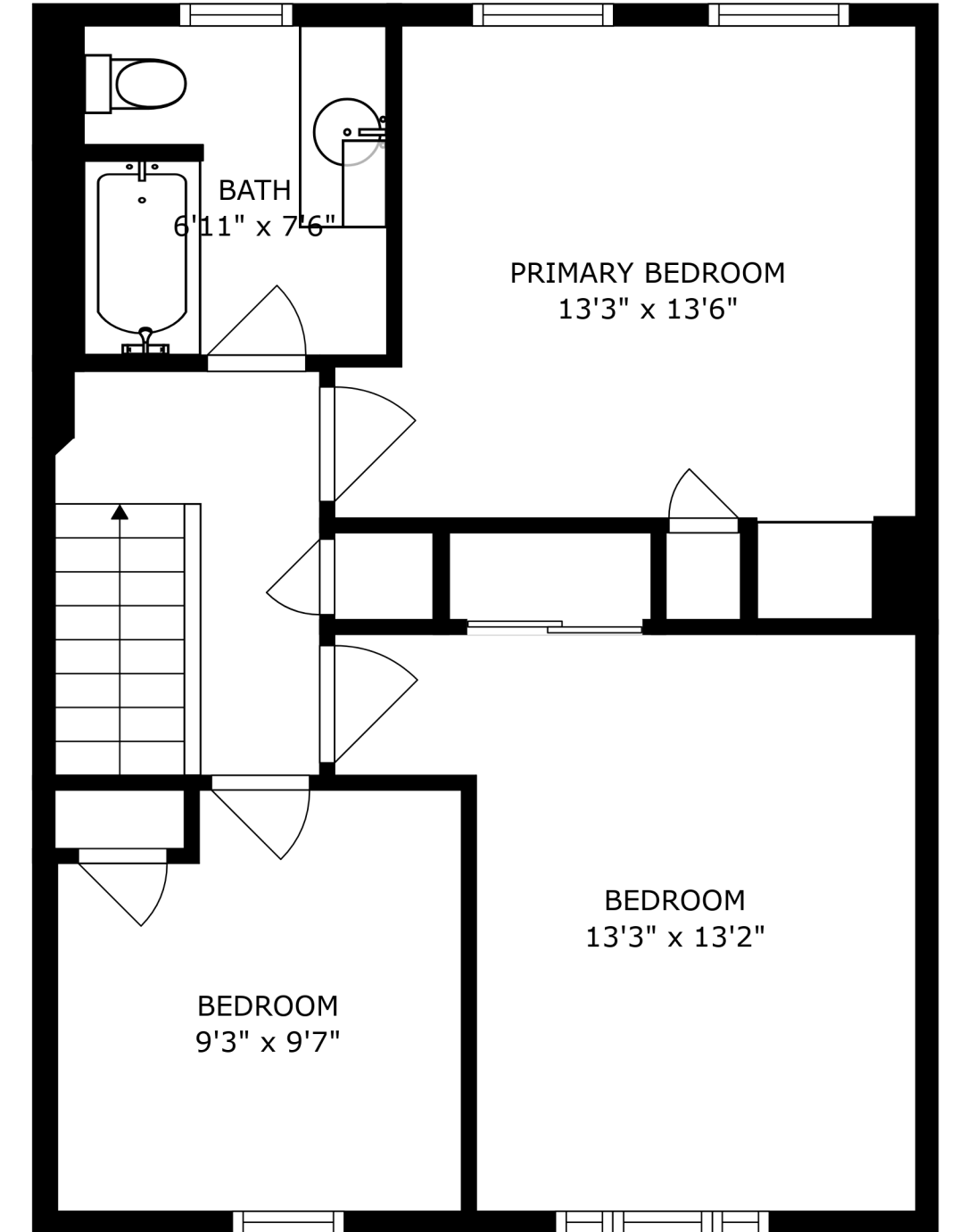
BALCONY
5'4" x 2'11"

KITCHEN
7'9" x 10'7"

DINING ROOM
11'0" x 13'7"

LIVING ROOM
19'8" x 13'2"

FLOOR 2



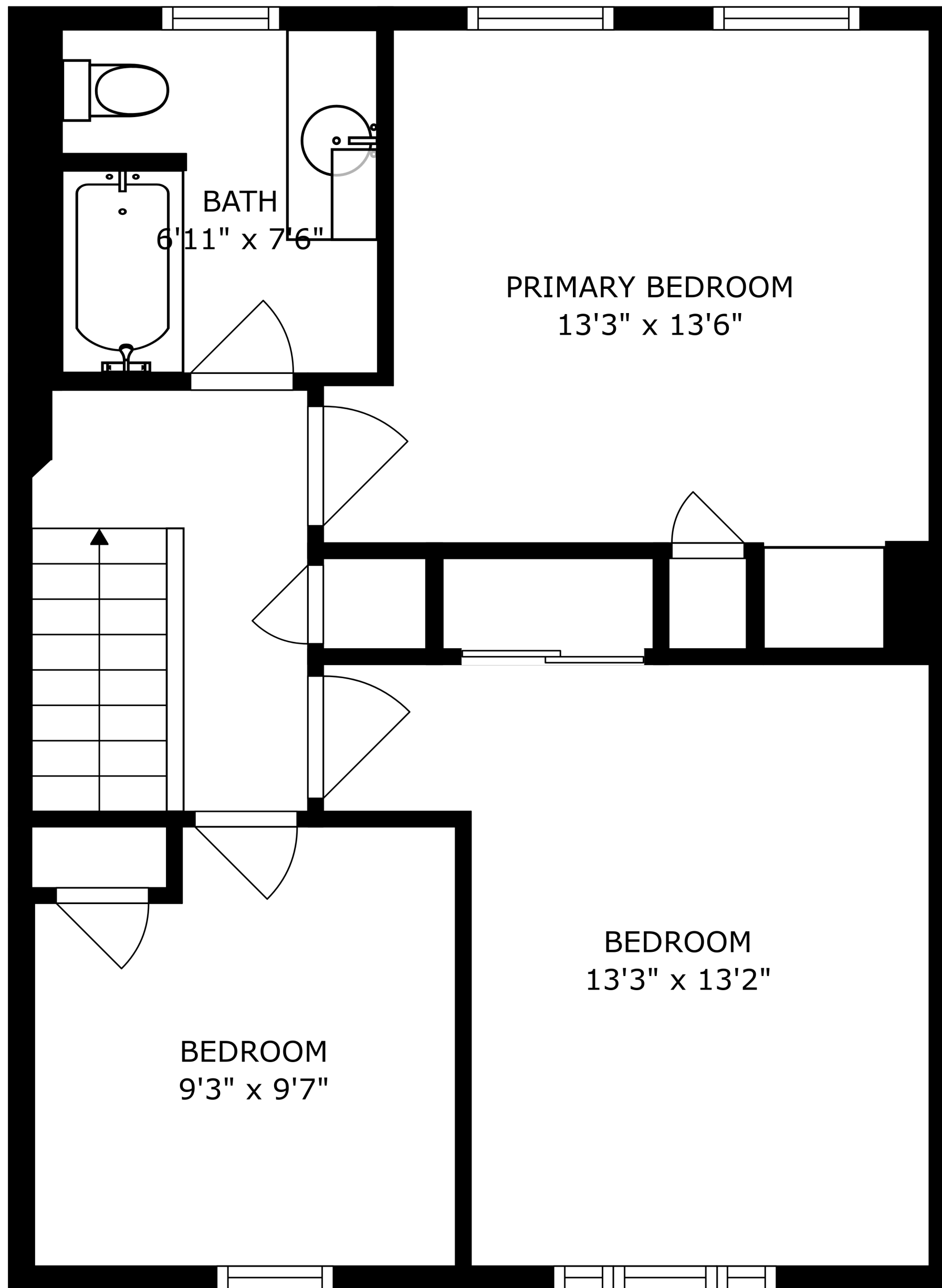
BATH
6'11" x 7'6"

PRIMARY BEDROOM
13'3" x 13'6"

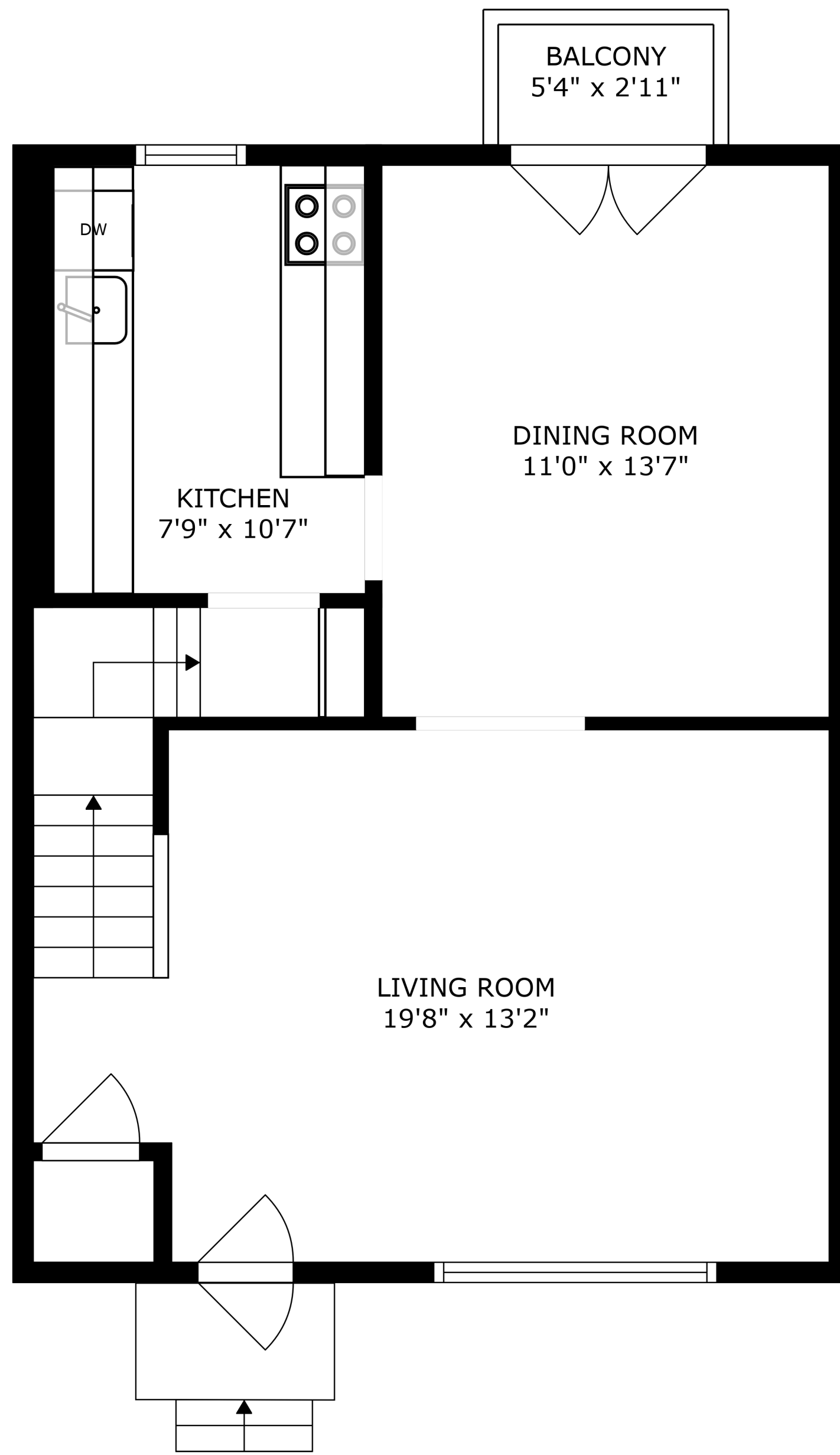
BEDROOM
9'3" x 9'7"

BEDROOM
13'3" x 13'2"

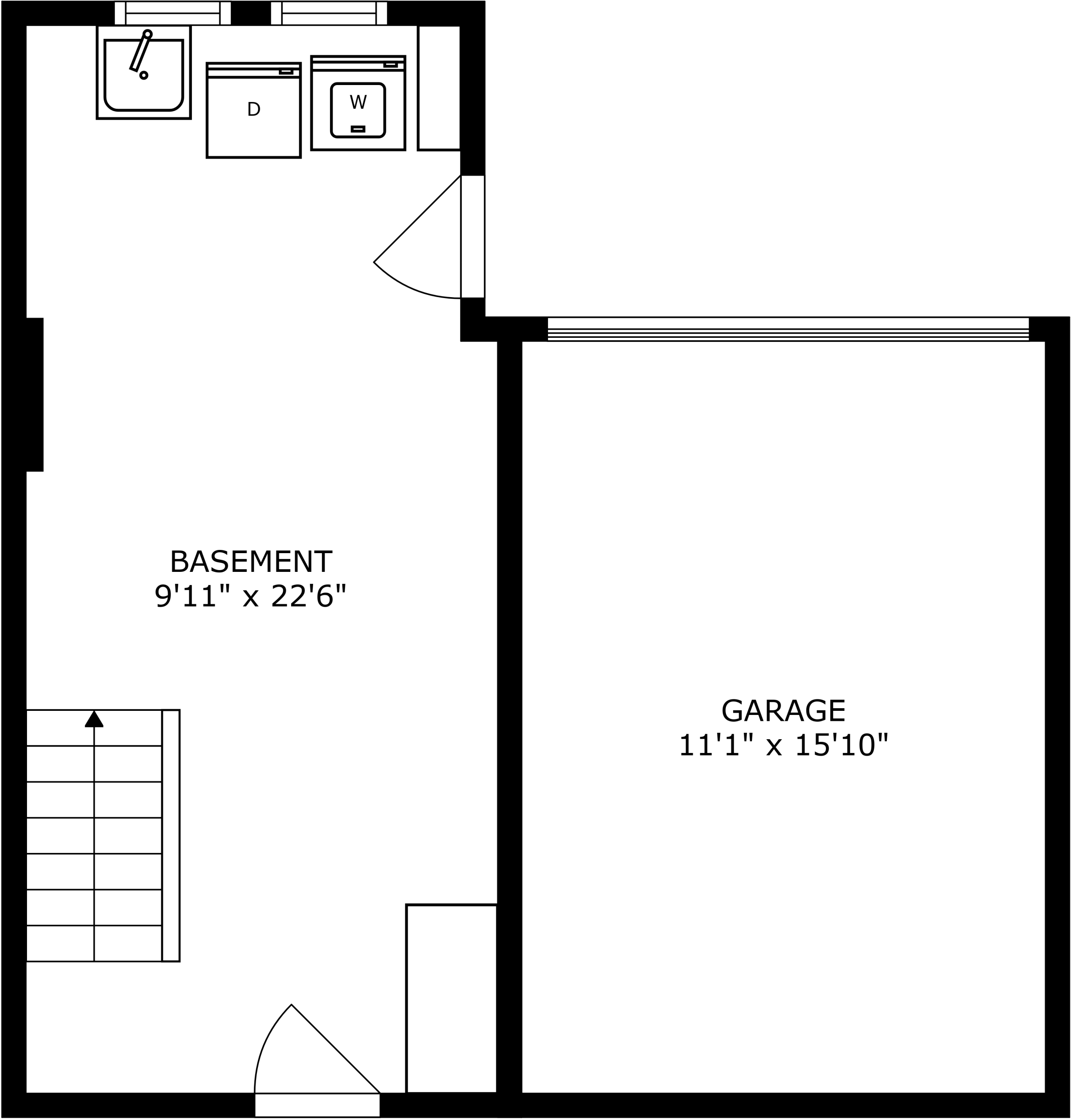
FLOOR 3



SIZES AND DIMENSIONS ARE APPROXIMATE, ACTUAL MAY VARY.



SIZES AND DIMENSIONS ARE APPROXIMATE, ACTUAL MAY VARY.



BASEMENT
9'11" x 22'6"

GARAGE
11'1" x 15'10"

SIZES AND DIMENSIONS ARE APPROXIMATE, ACTUAL MAY VARY.