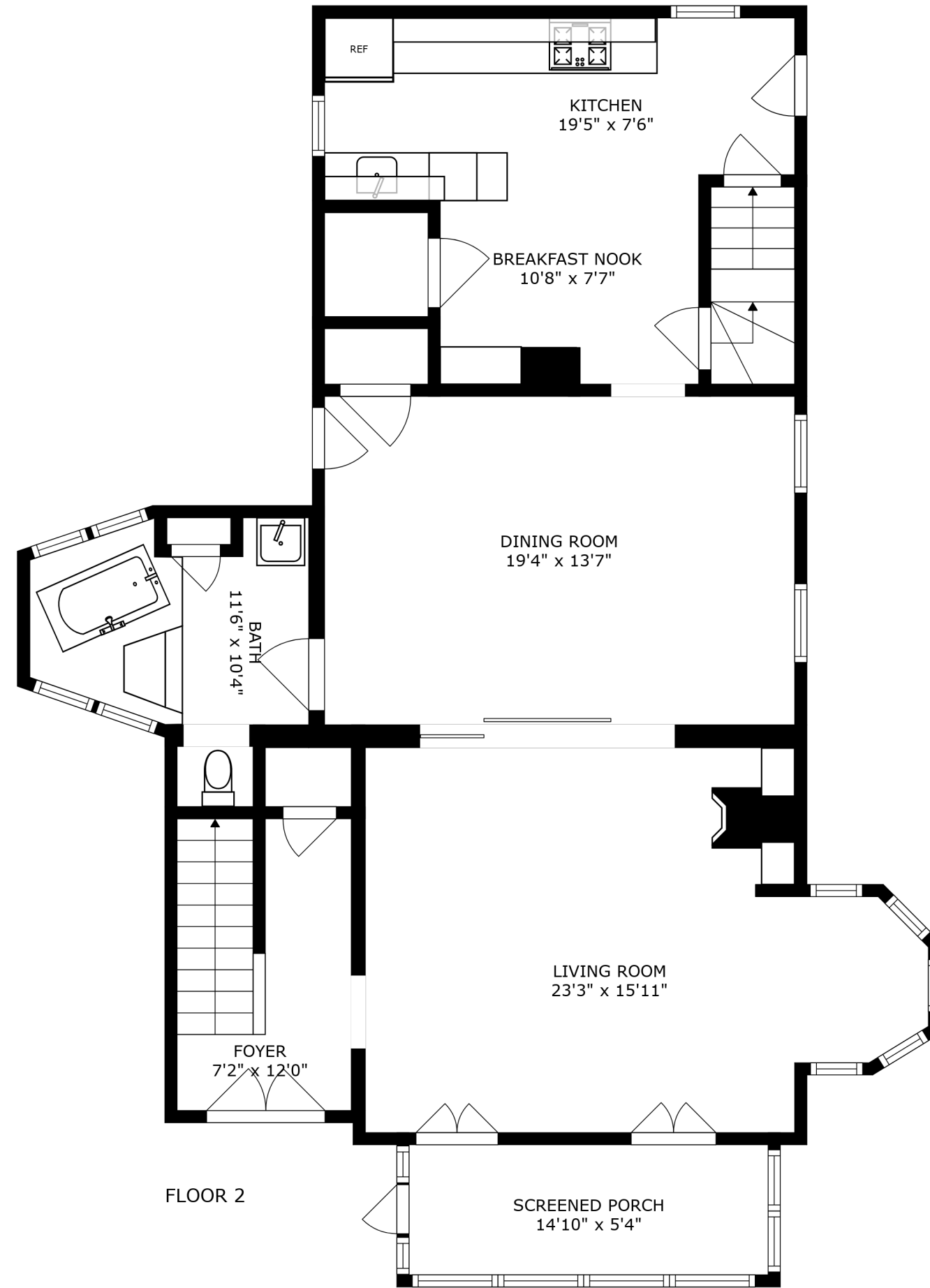


BASEMENT
24'0" x 44'6"

FLOOR 1



KITCHEN
19'5" x 7'6"

BREAKFAST NOOK
10'8" x 7'7"

DINING ROOM
19'4" x 13'7"

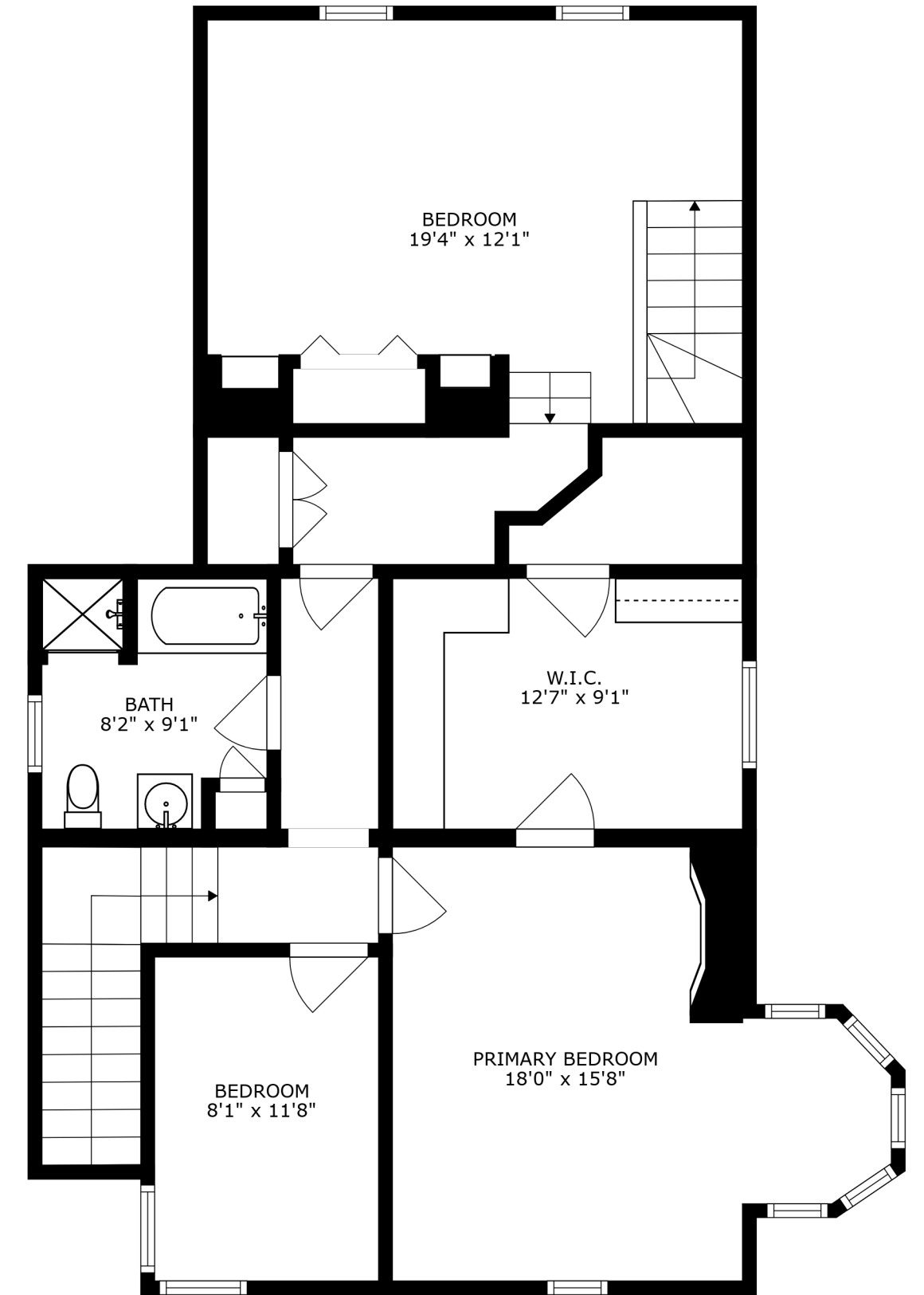
BATH
11'5" x 10'4"

LIVING ROOM
23'3" x 15'11"

FOYER
7'2" x 12'0"

SCREENED PORCH
14'10" x 5'4"

FLOOR 2



BEDROOM
19'4" x 12'1"

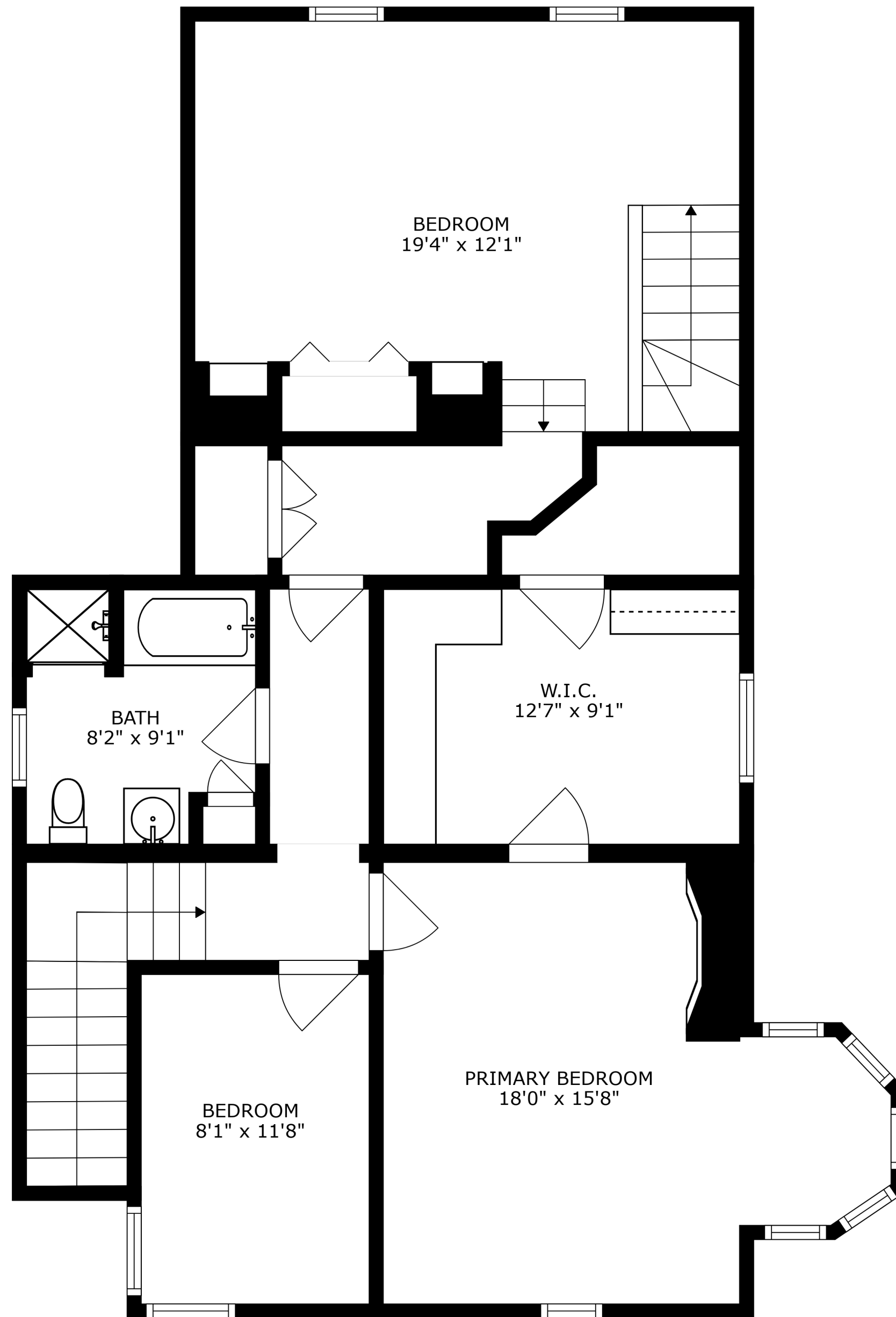
W.I.C.
12'7" x 9'1"

BATH
8'2" x 9'1"

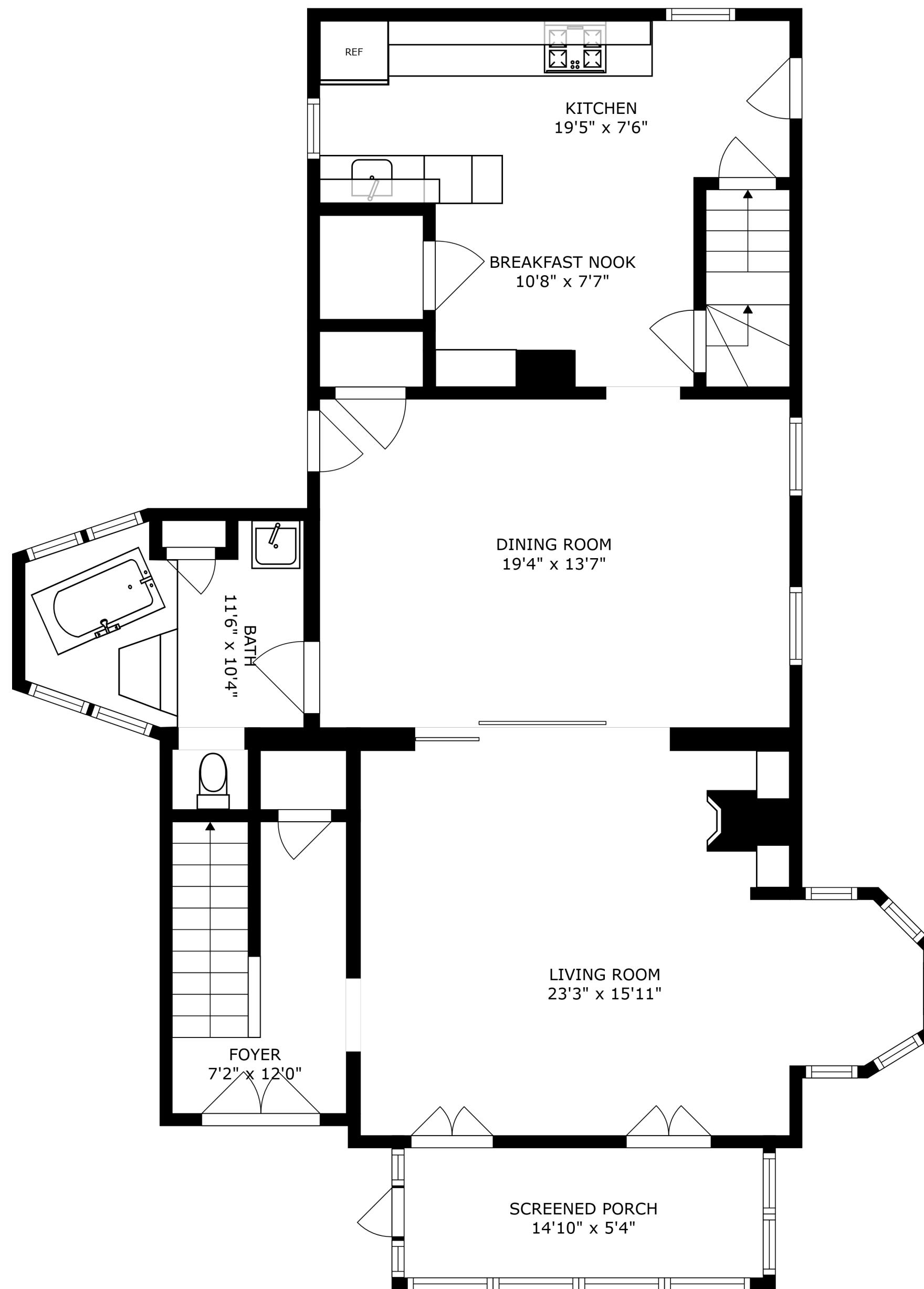
BEDROOM
8'1" x 11'8"

PRIMARY BEDROOM
18'0" x 15'8"

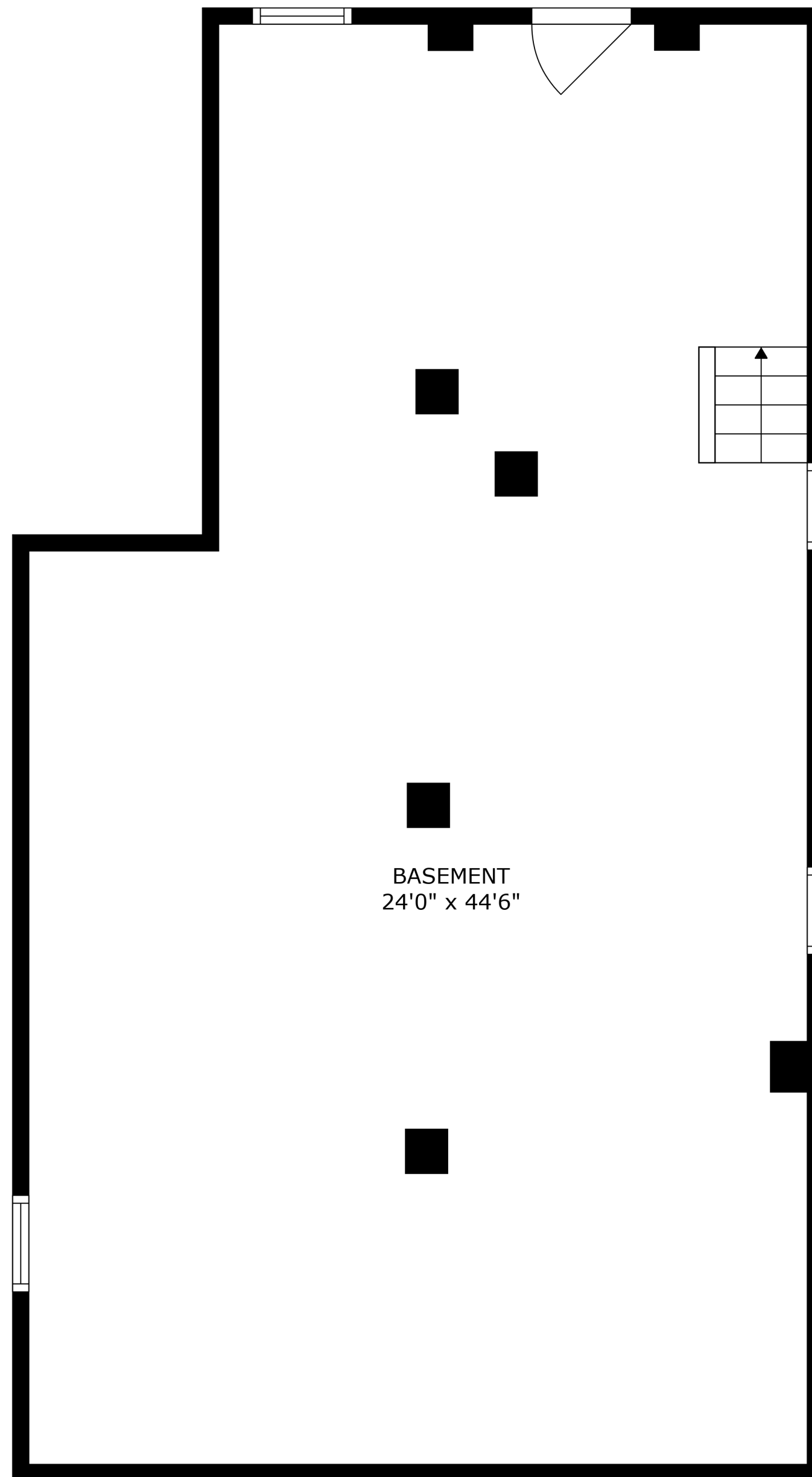
FLOOR 3



SIZES AND DIMENSIONS ARE APPROXIMATE, ACTUAL MAY VARY.



SIZES AND DIMENSIONS ARE APPROXIMATE, ACTUAL MAY VARY.



SIZES AND DIMENSIONS ARE APPROXIMATE, ACTUAL MAY VARY.