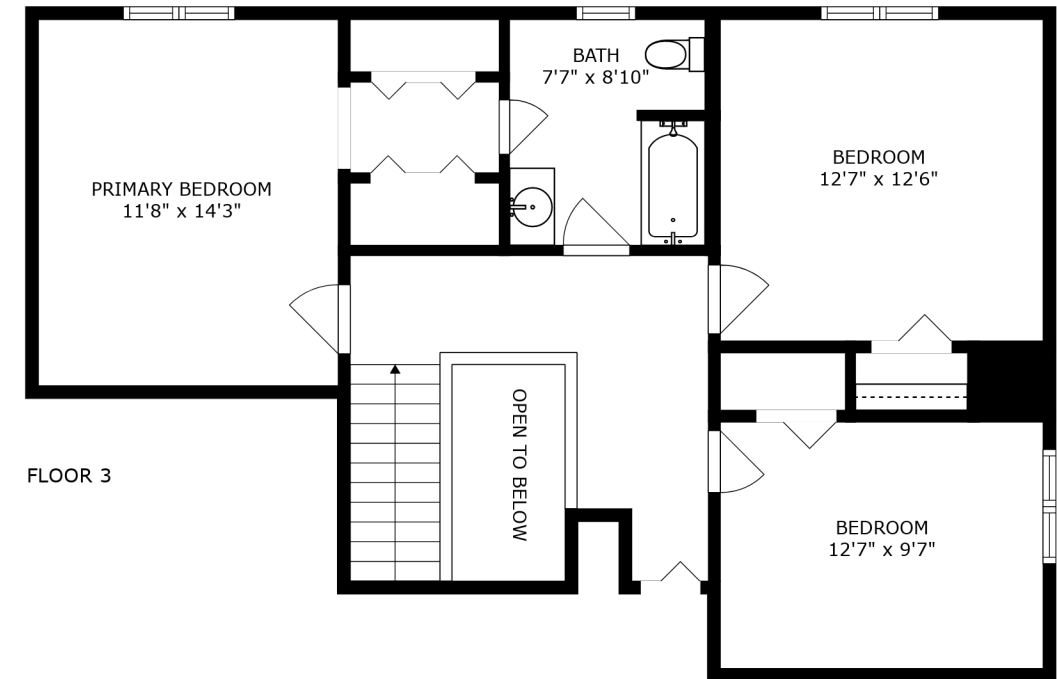
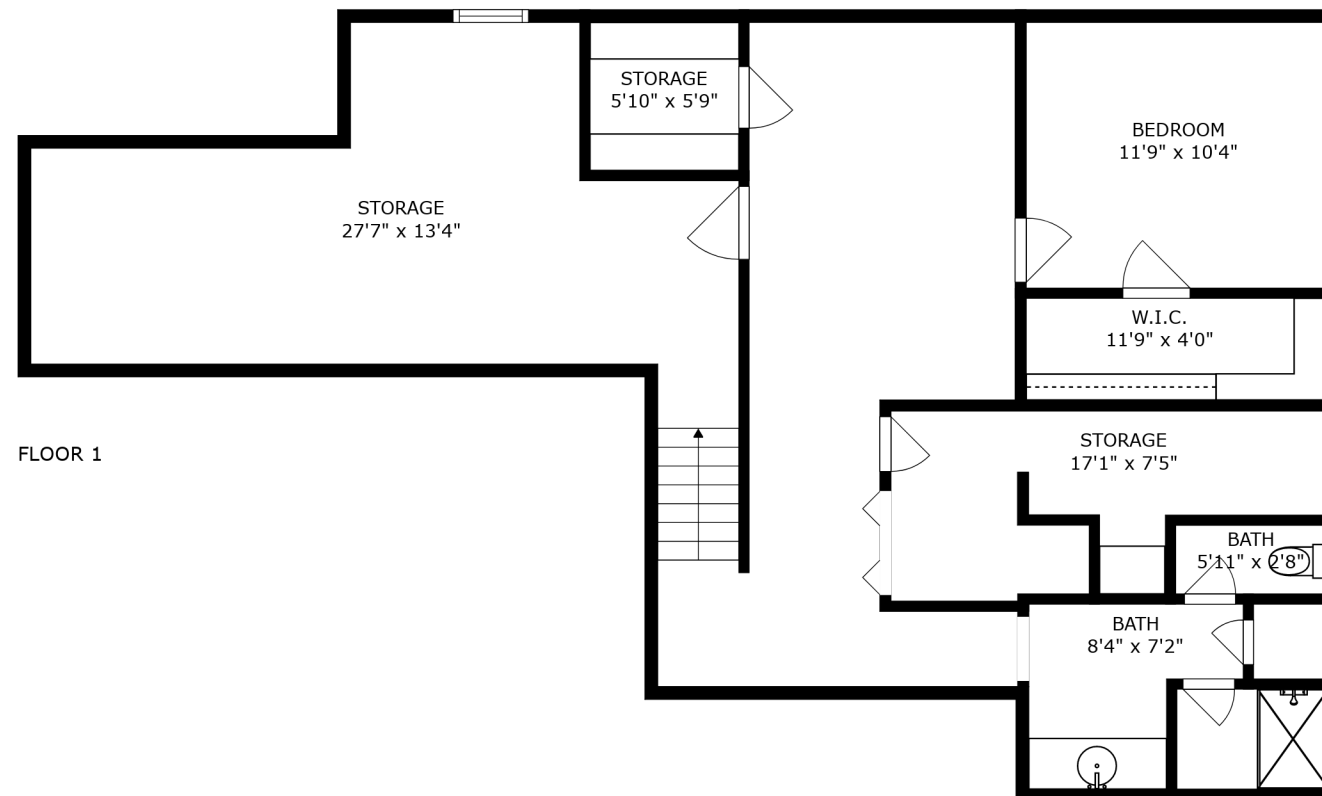


FLOOR 2

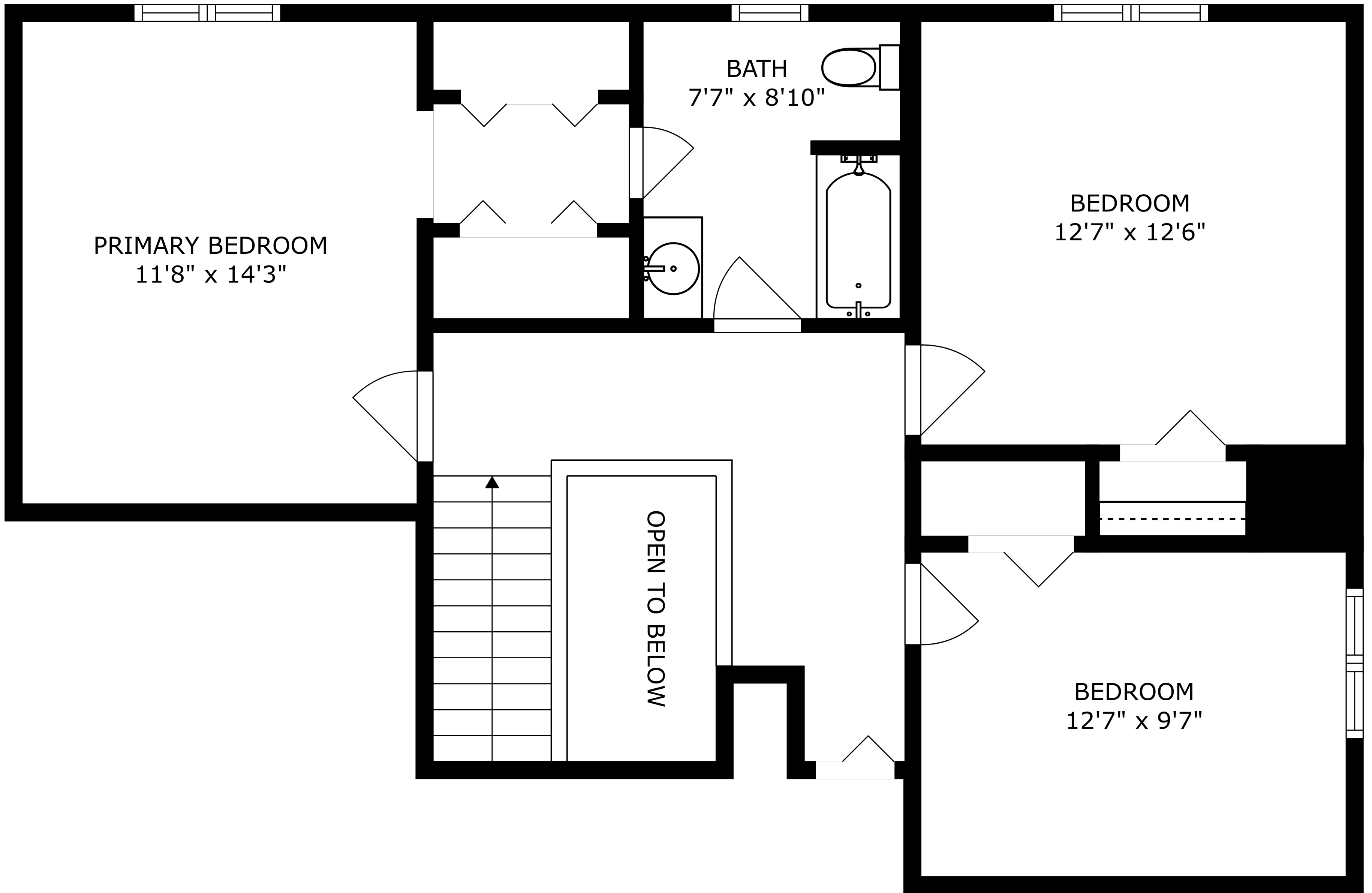


FLOOR 3



FLOOR 1

SIZES AND DIMENSIONS ARE APPROXIMATE, ACTUAL MAY VARY.



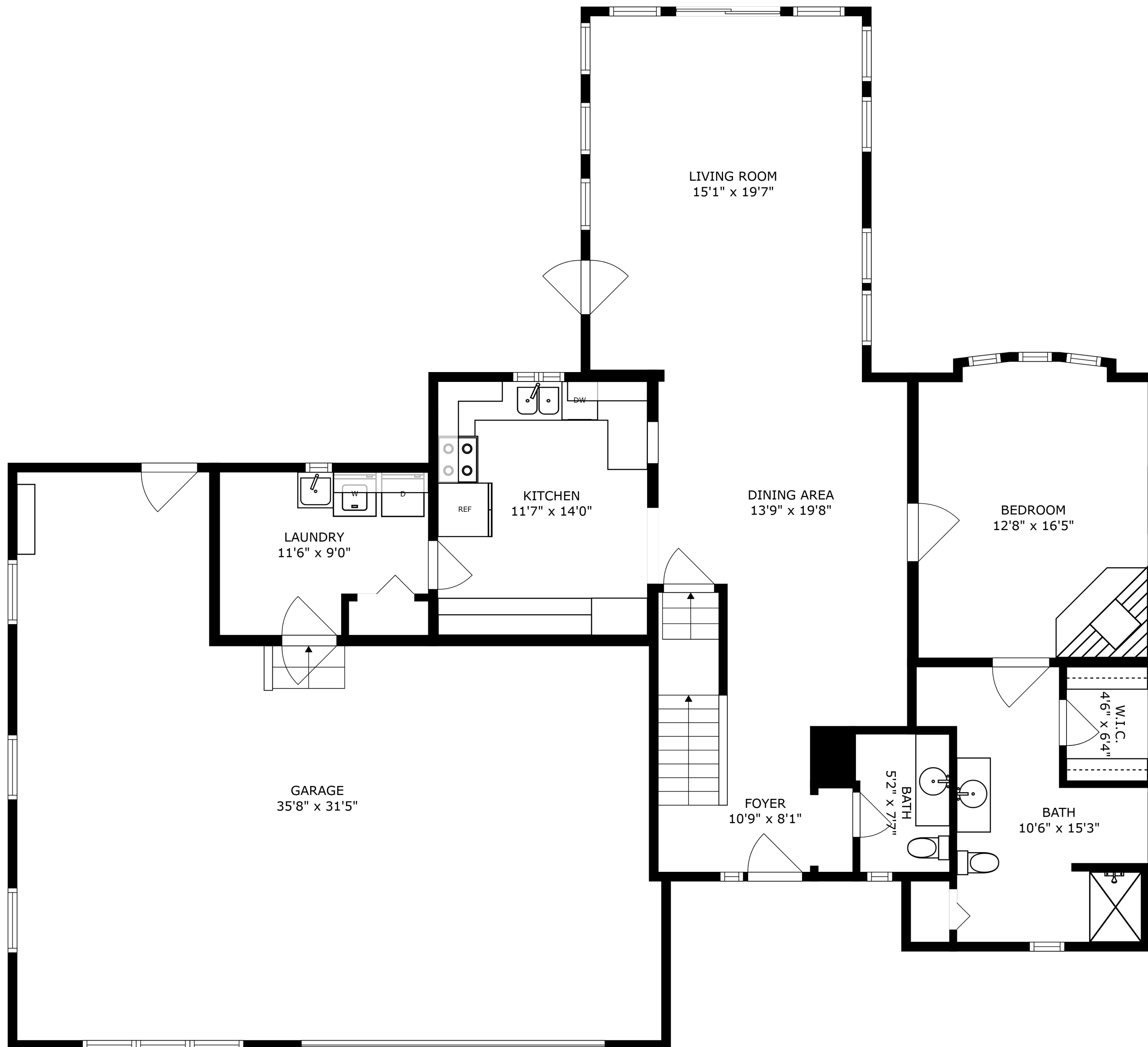
PRIMARY BEDROOM
11'8" x 14'3"

BATH
7'7" x 8'10"

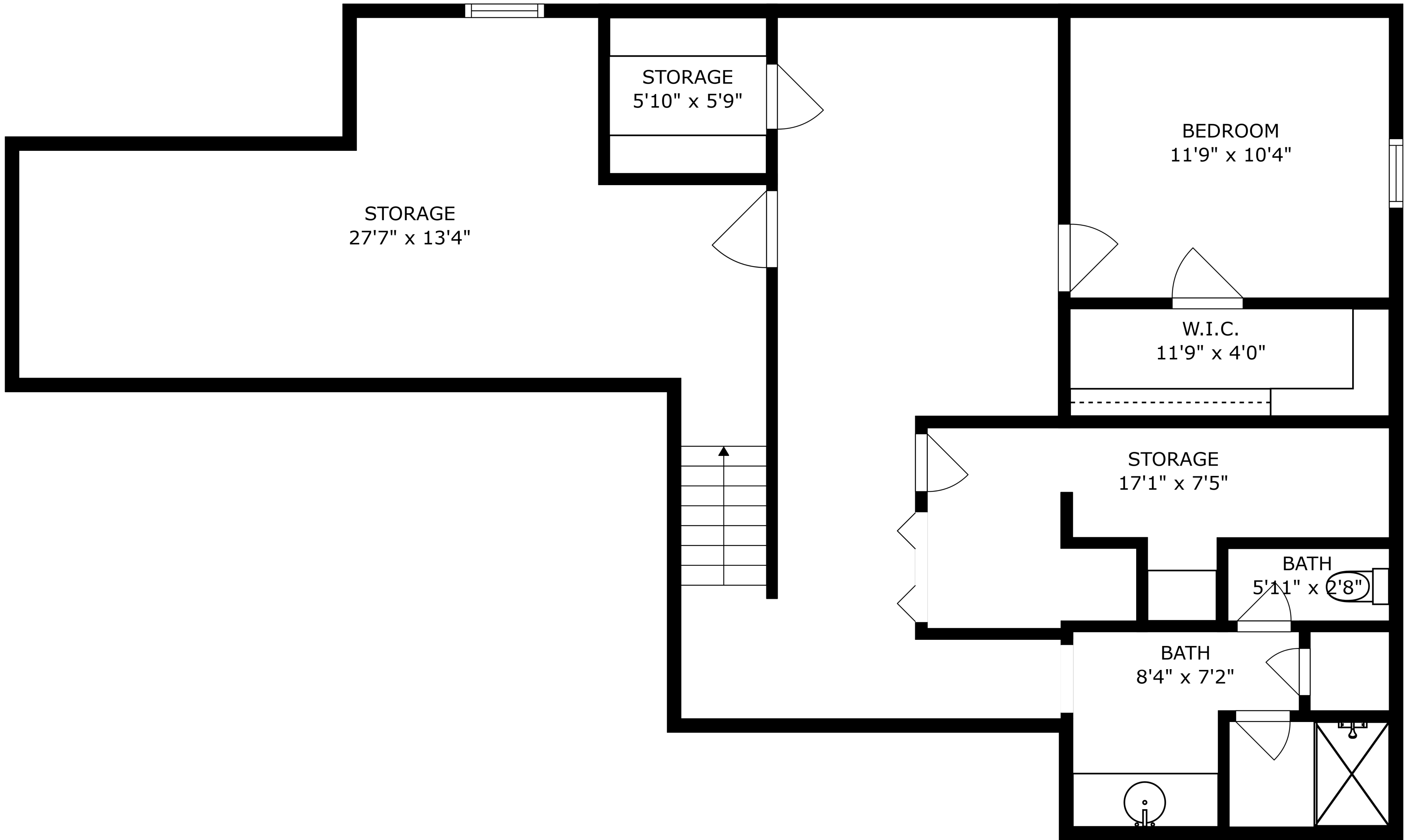
BEDROOM
12'7" x 12'6"

OPEN TO BELOW

BEDROOM
12'7" x 9'7"



SIZES AND DIMENSIONS ARE APPROXIMATE, ACTUAL MAY VARY.



SIZES AND DIMENSIONS ARE APPROXIMATE, ACTUAL MAY VARY.