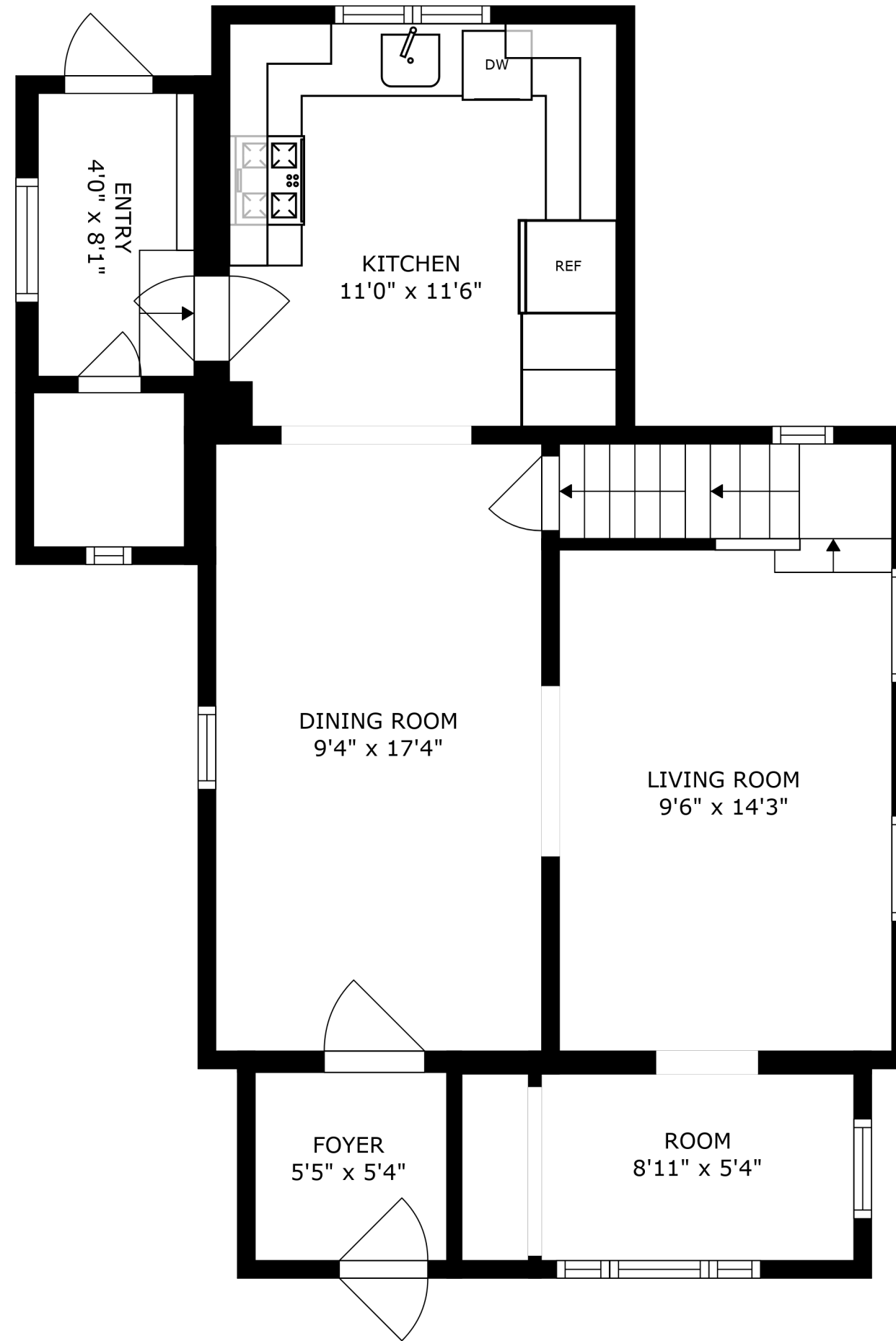


BASEMENT
18'3" x 27'4"

FLOOR 1



KITCHEN
11'0" x 11'6"

ENTRY
4'0" x 8'1"

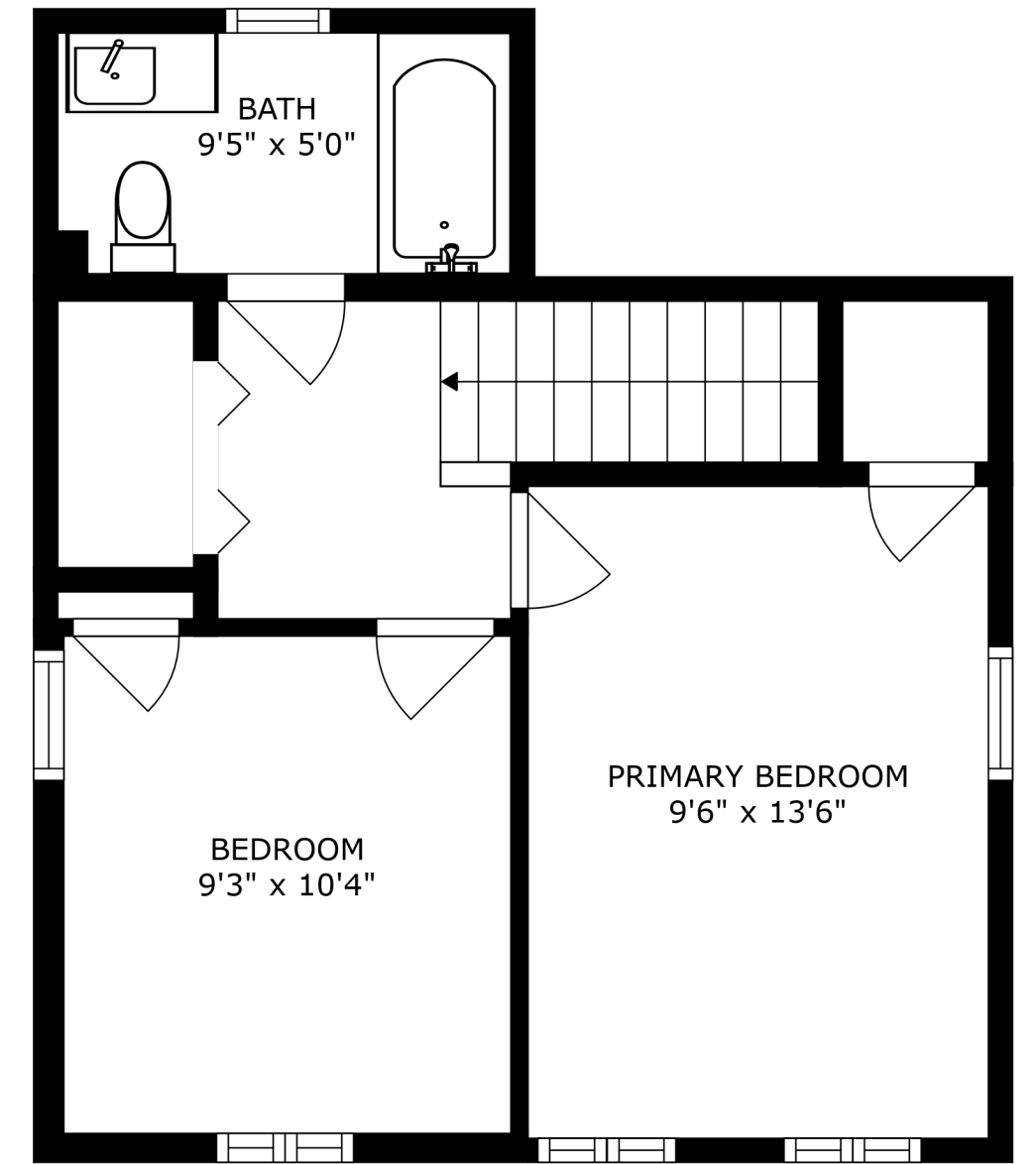
DINING ROOM
9'4" x 17'4"

LIVING ROOM
9'6" x 14'3"

FOYER
5'5" x 5'4"

ROOM
8'11" x 5'4"

FLOOR 2

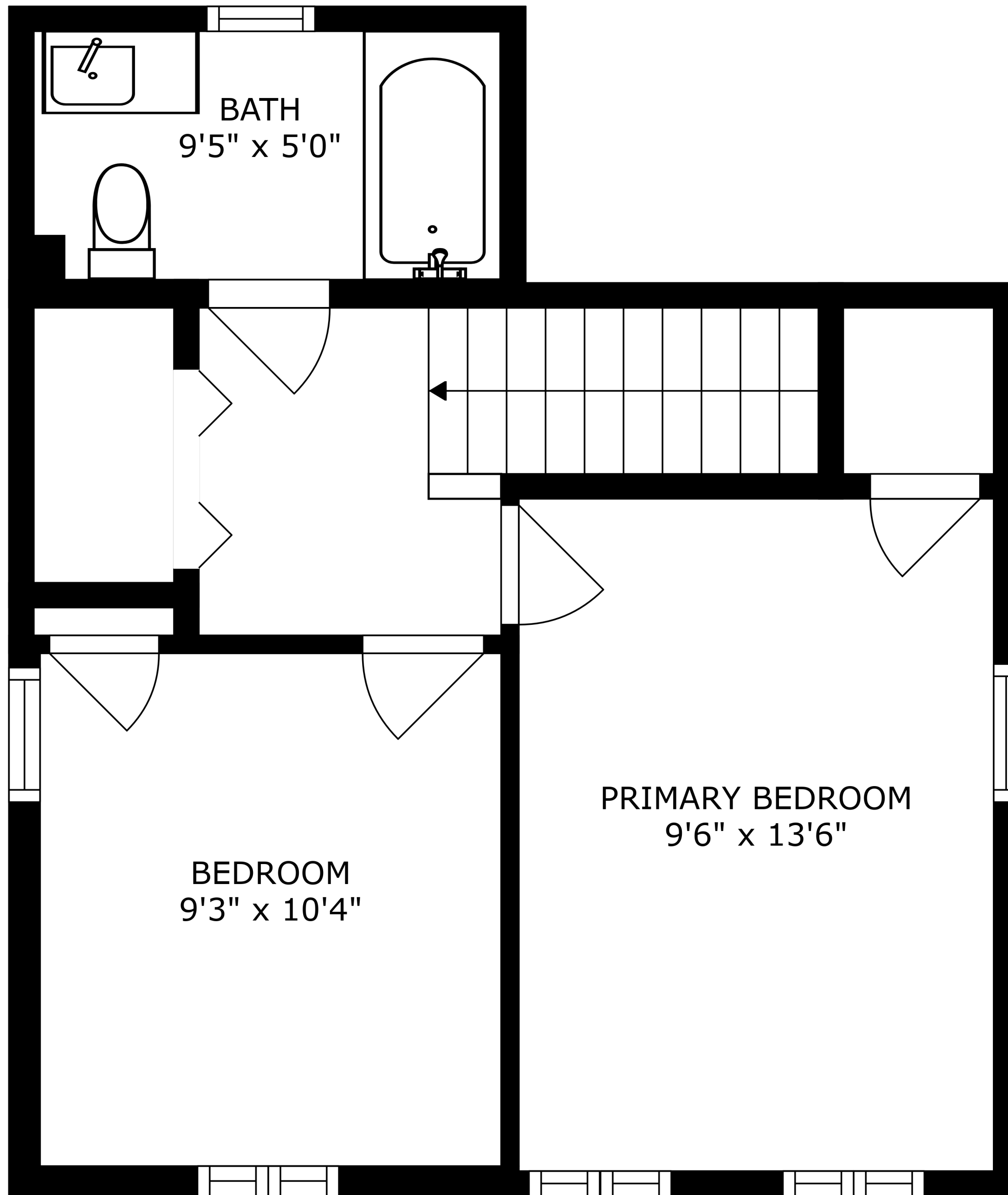


BATH
9'5" x 5'0"

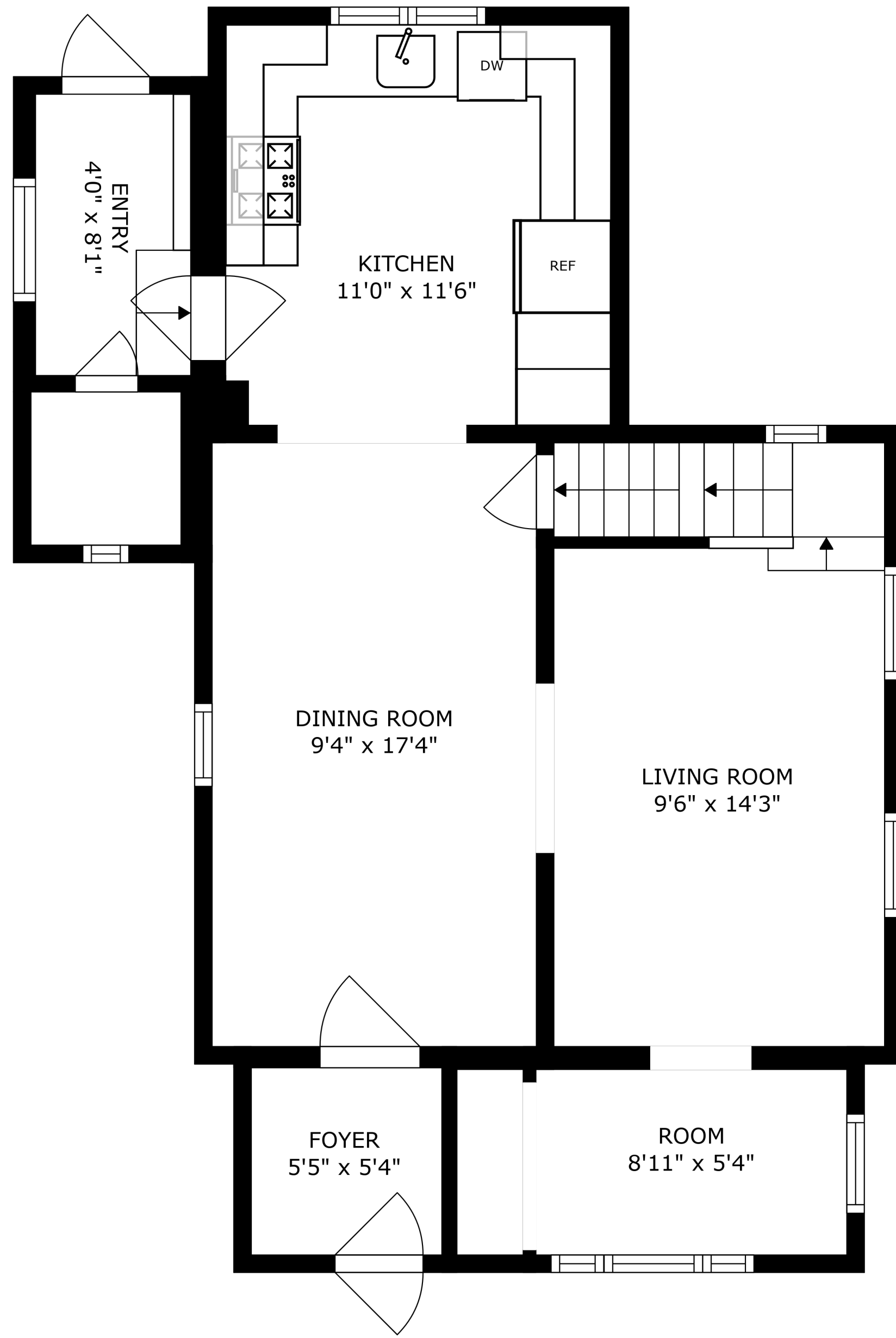
BEDROOM
9'3" x 10'4"

PRIMARY BEDROOM
9'6" x 13'6"

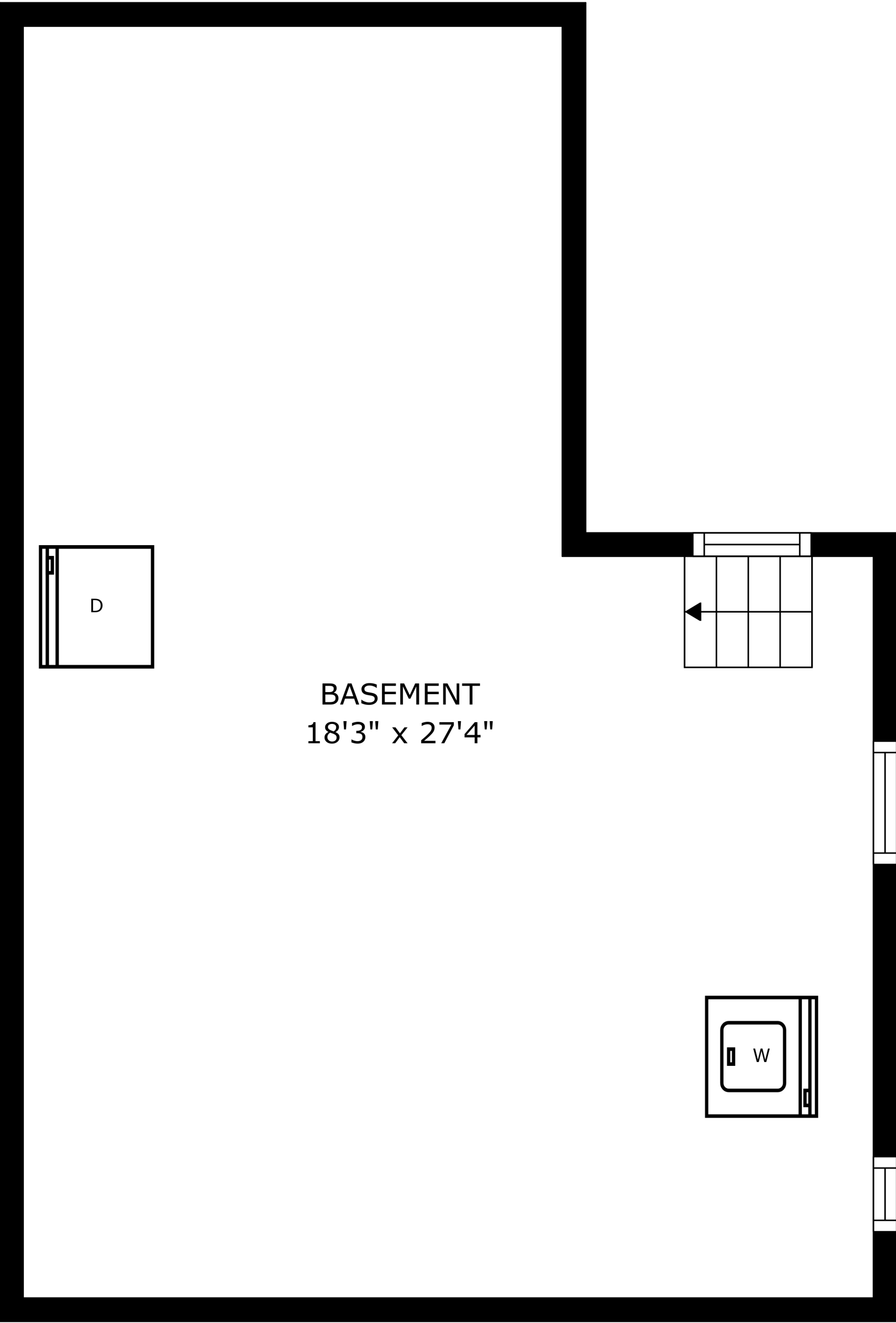
FLOOR 3



SIZES AND DIMENSIONS ARE APPROXIMATE, ACTUAL MAY VARY.



SIZES AND DIMENSIONS ARE APPROXIMATE, ACTUAL MAY VARY.



BASEMENT
18'3" x 27'4"

SIZES AND DIMENSIONS ARE APPROXIMATE, ACTUAL MAY VARY.