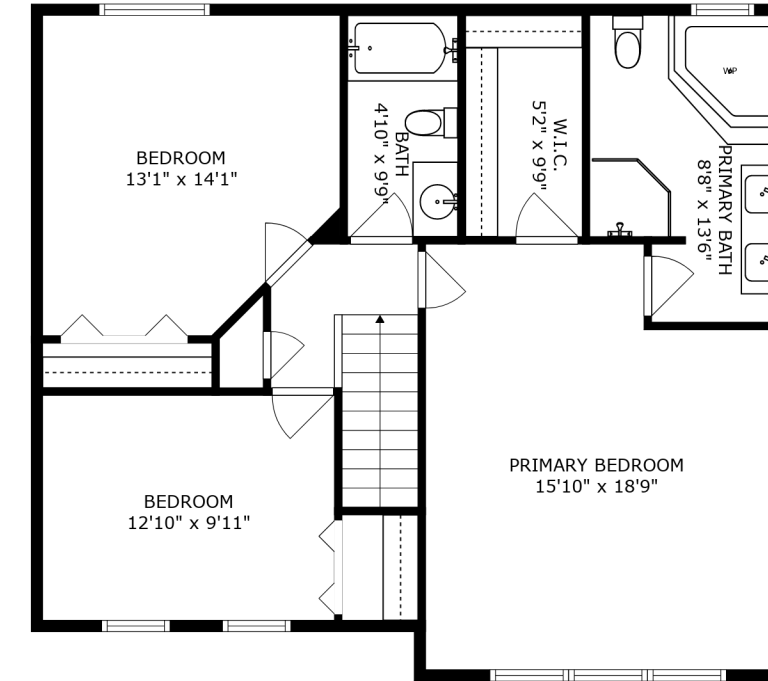
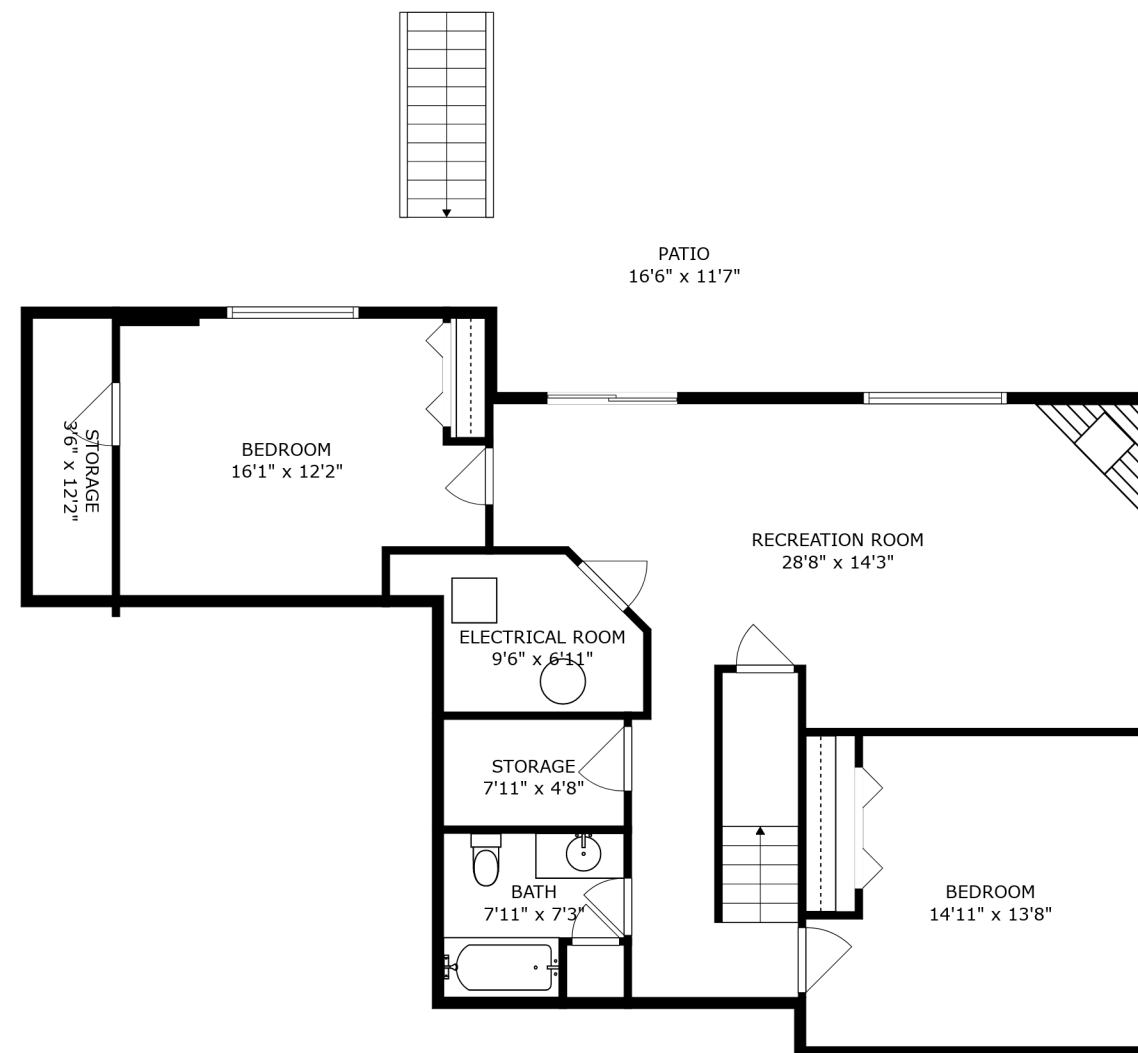


FLOOR 2

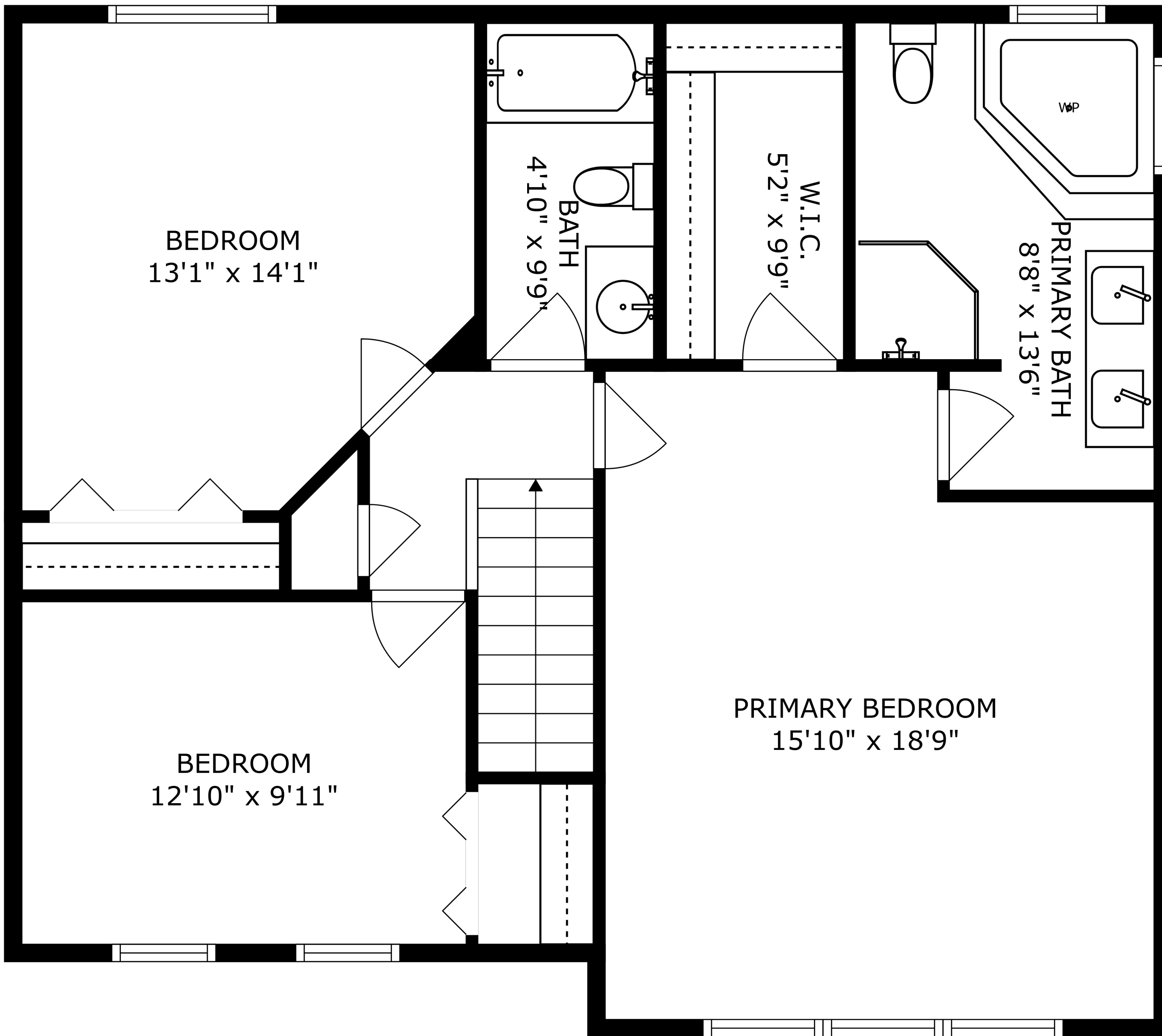


FLOOR 3



FLOOR 1

SIZES AND DIMENSIONS ARE APPROXIMATE, ACTUAL MAY VARY.



BEDROOM
13'1" x 14'1"

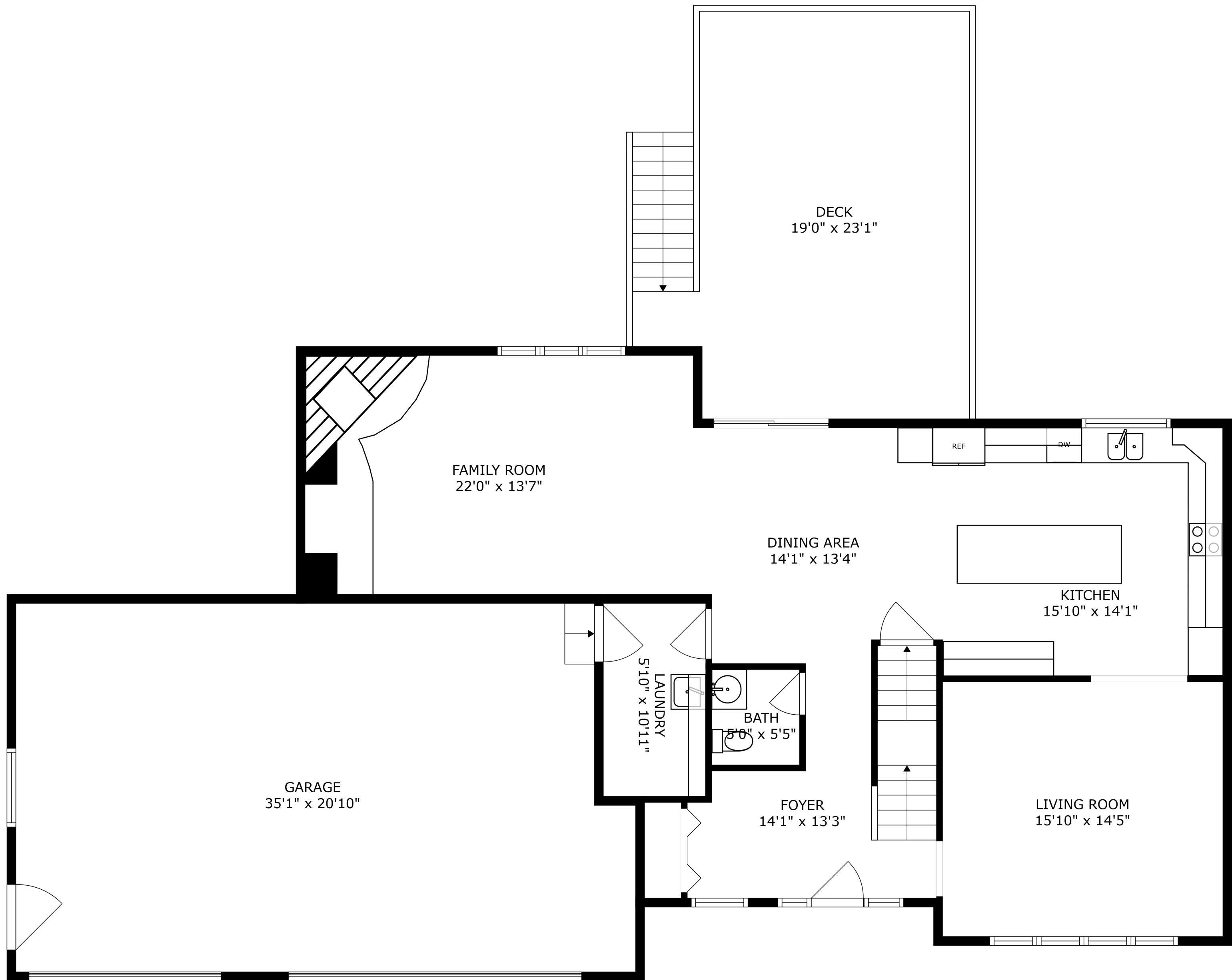
BATH
4'10" x 9'9"

W.I.C.
5'2" x 9'9"

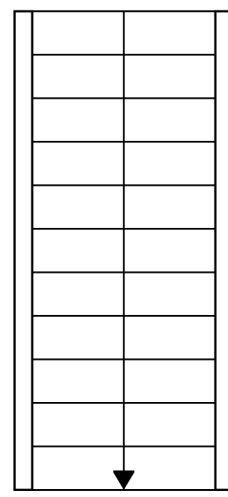
PRIMARY BATH
8'8" x 13'6"

BEDROOM
12'10" x 9'11"

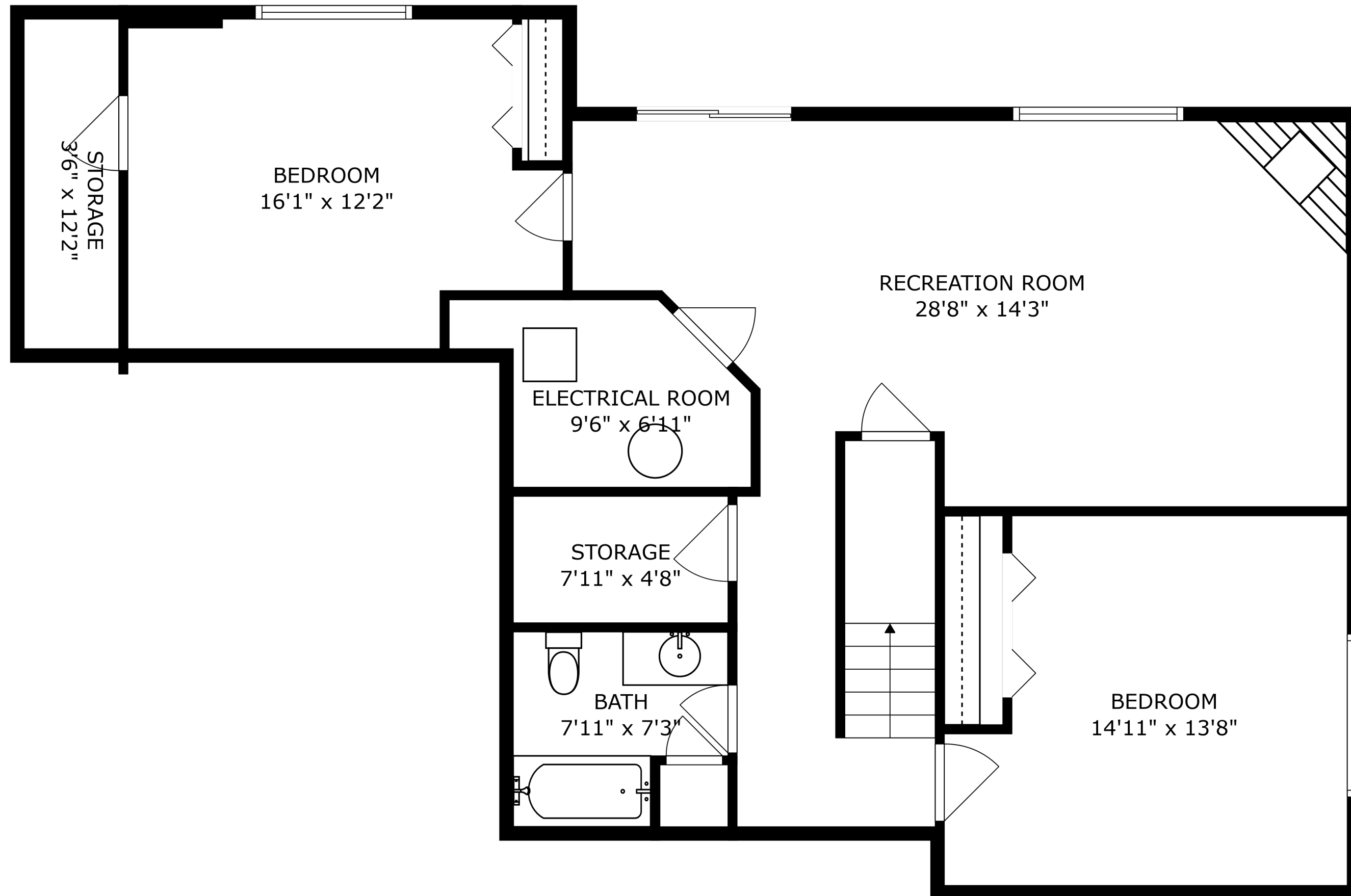
PRIMARY BEDROOM
15'10" x 18'9"



SIZES AND DIMENSIONS ARE APPROXIMATE, ACTUAL MAY VARY.



PATIO
16'6" x 11'7"



SIZES AND DIMENSIONS ARE APPROXIMATE, ACTUAL MAY VARY.