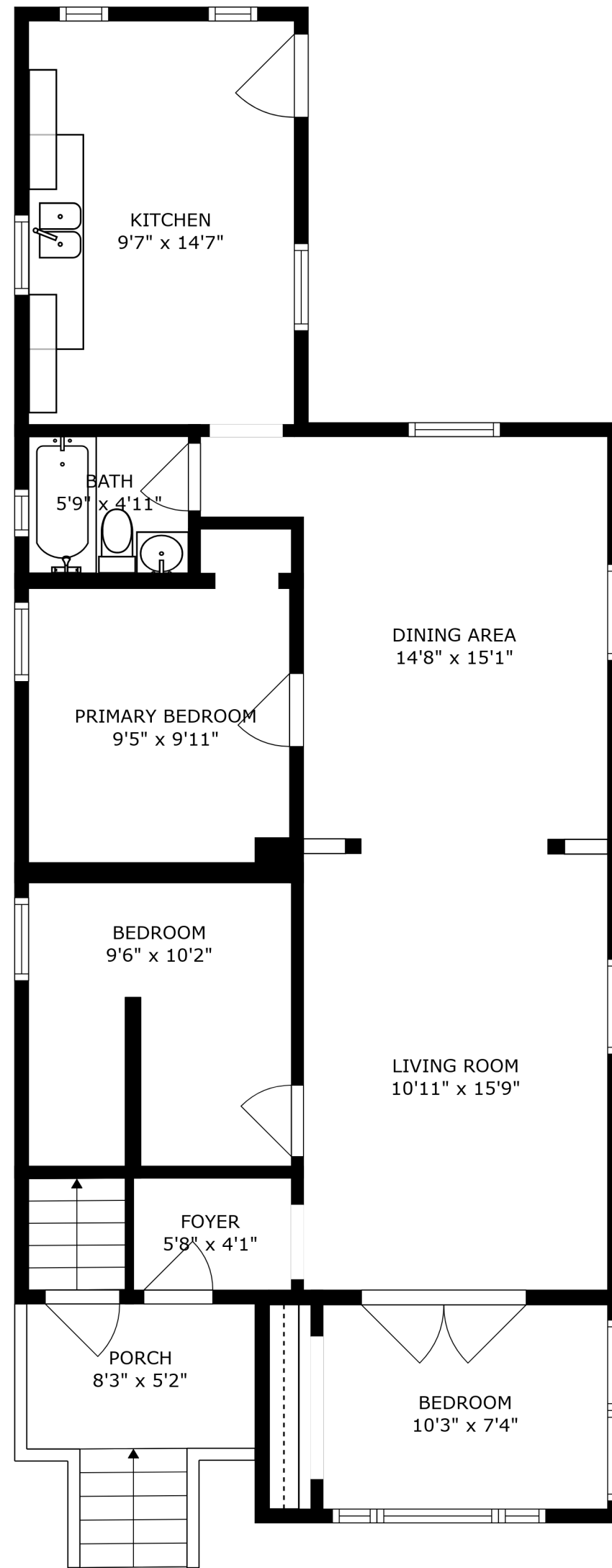


BASEMENT
20'6" x 45'8"

FLOOR 1



KITCHEN
9'7" x 14'7"

BATH
5'9" x 4'11"

DINING AREA
14'8" x 15'1"

PRIMARY BEDROOM
9'5" x 9'11"

BEDROOM
9'6" x 10'2"

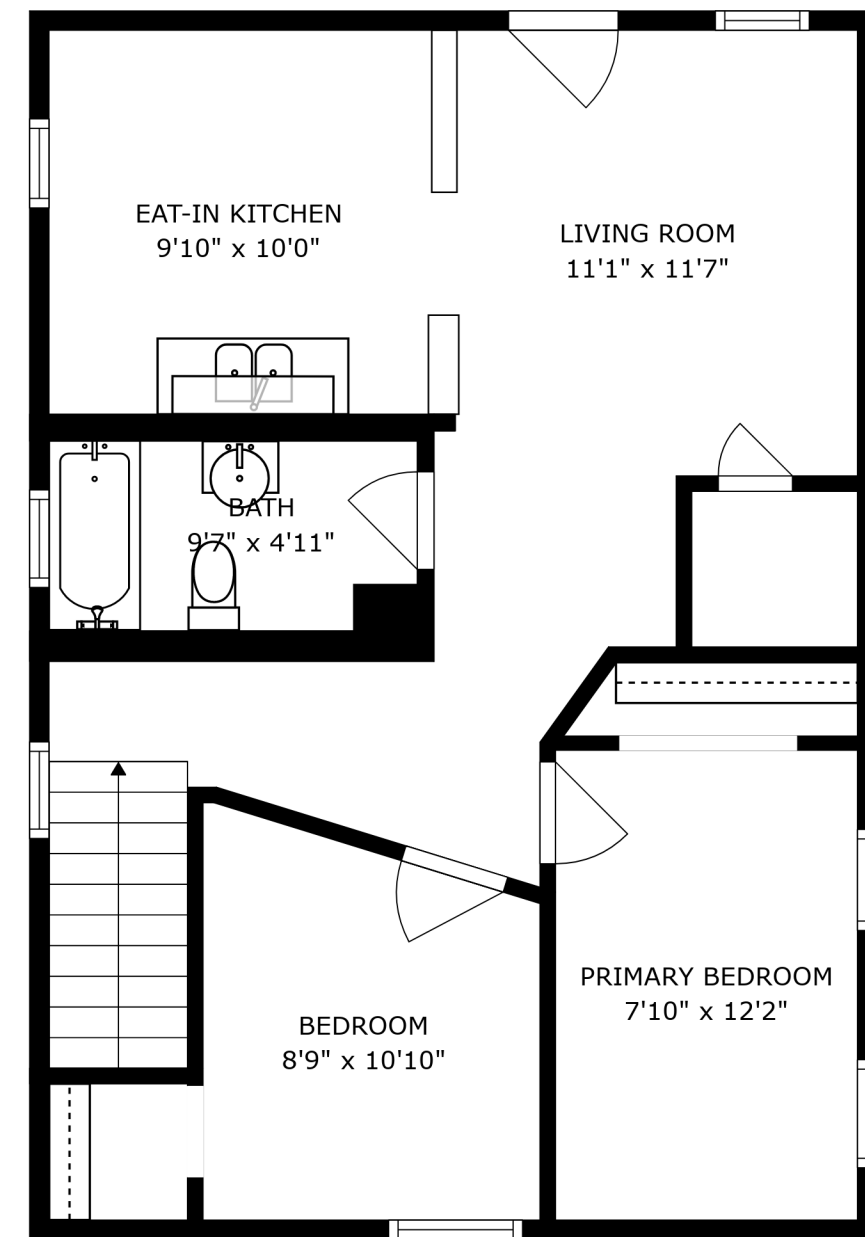
LIVING ROOM
10'11" x 15'9"

FOYER
5'8" x 4'1"

PORCH
8'3" x 5'2"

BEDROOM
10'3" x 7'4"

FLOOR 2



EAT-IN KITCHEN
9'10" x 10'0"

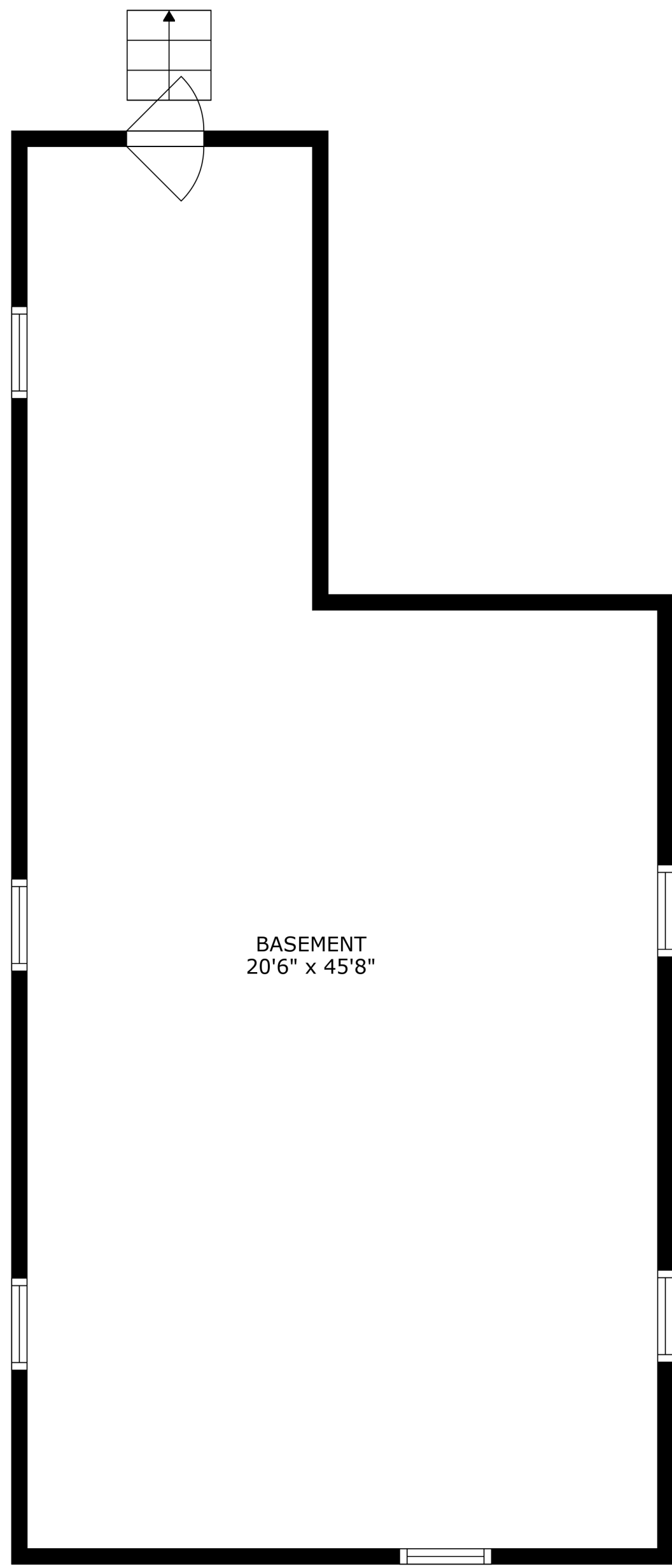
LIVING ROOM
11'1" x 11'7"

BATH
9'7" x 4'11"

BEDROOM
8'9" x 10'10"

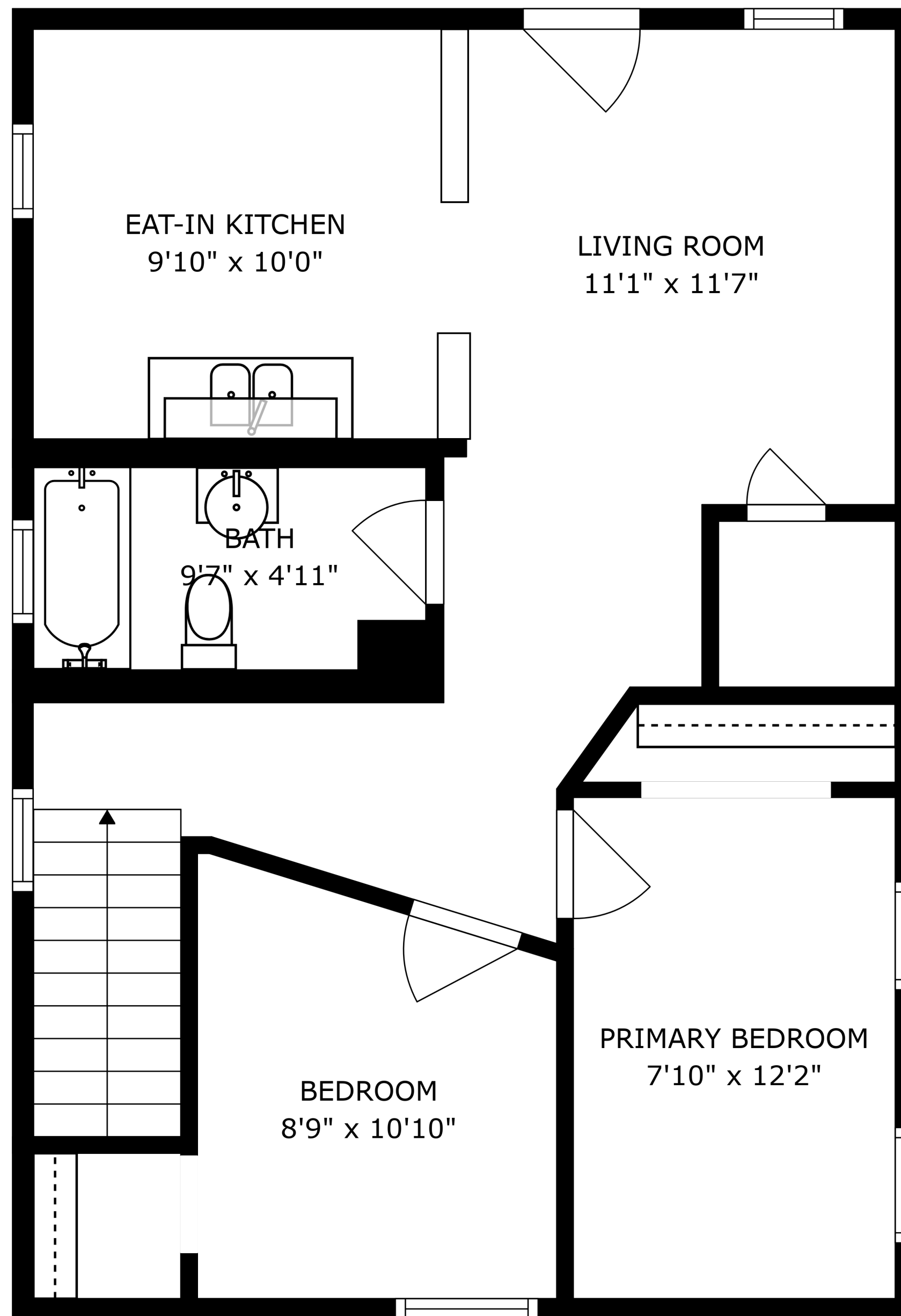
PRIMARY BEDROOM
7'10" x 12'2"

FLOOR 3

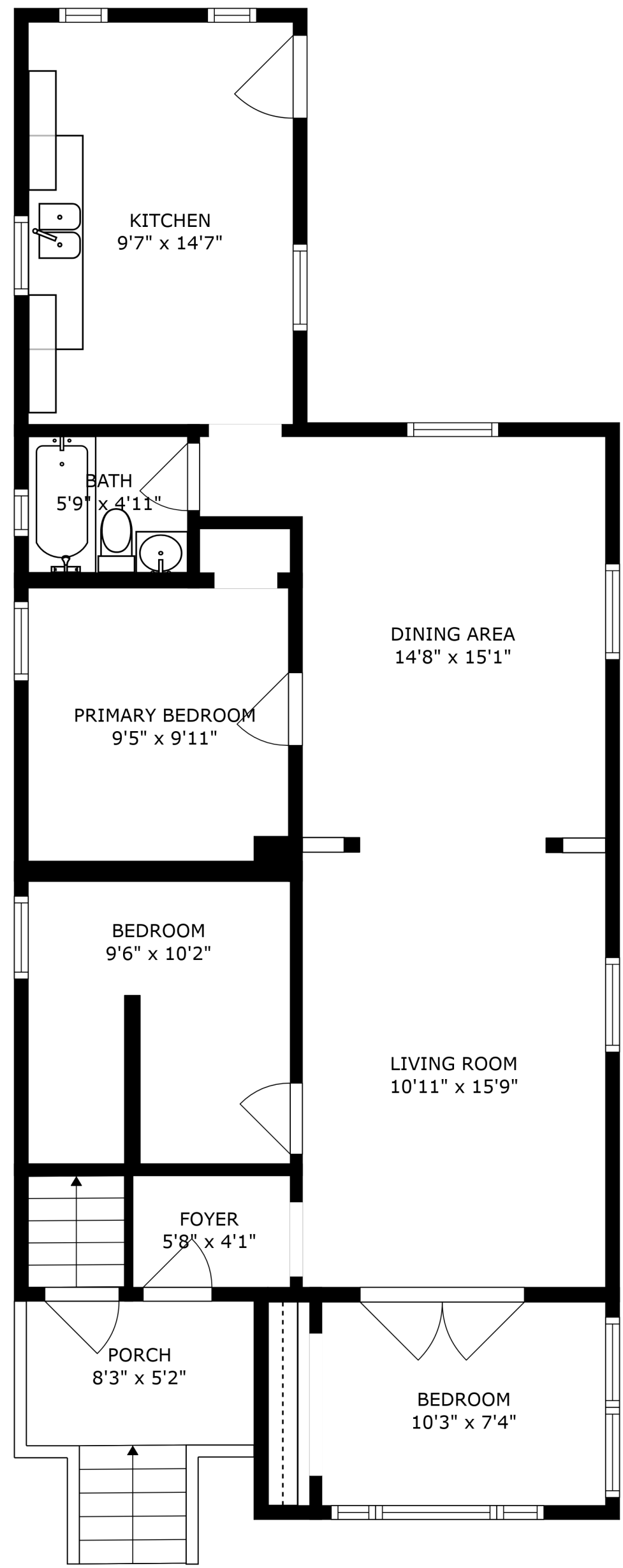


BASEMENT
20'6" x 45'8"

SIZES AND DIMENSIONS ARE APPROXIMATE, ACTUAL MAY VARY.



SIZES AND DIMENSIONS ARE APPROXIMATE, ACTUAL MAY VARY.



SIZES AND DIMENSIONS ARE APPROXIMATE, ACTUAL MAY VARY.