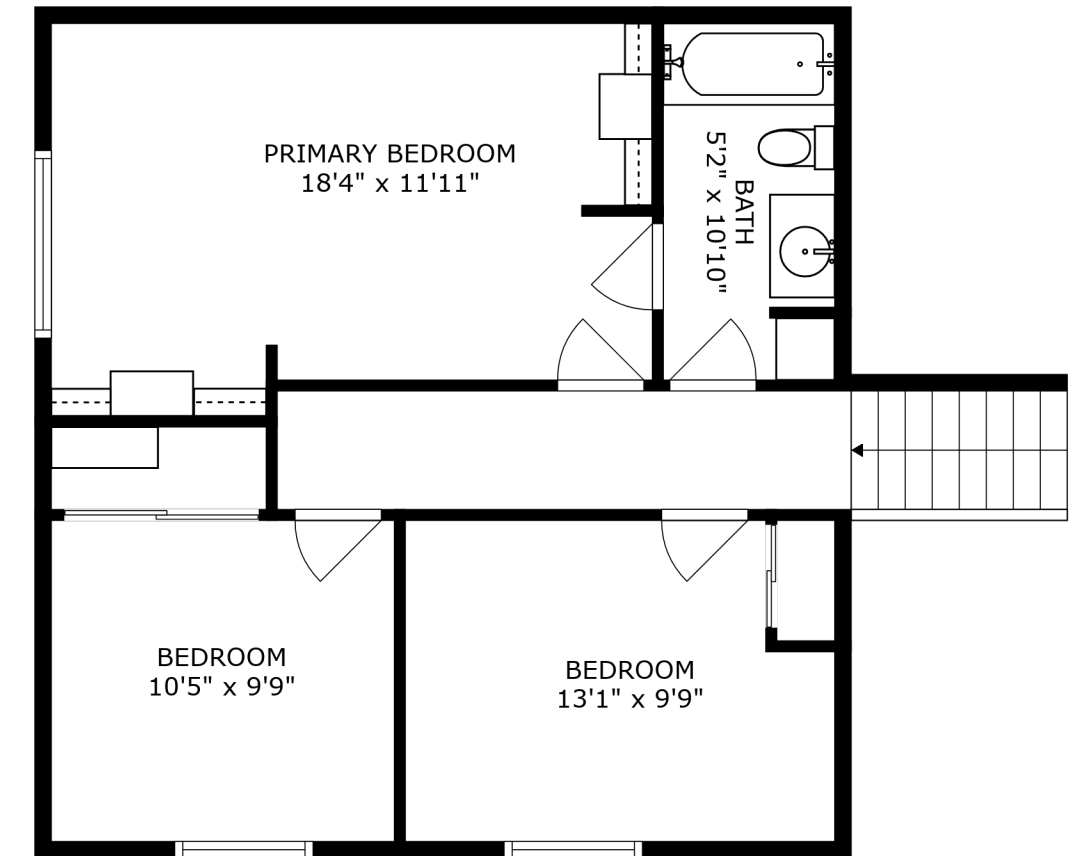


FLOOR 2

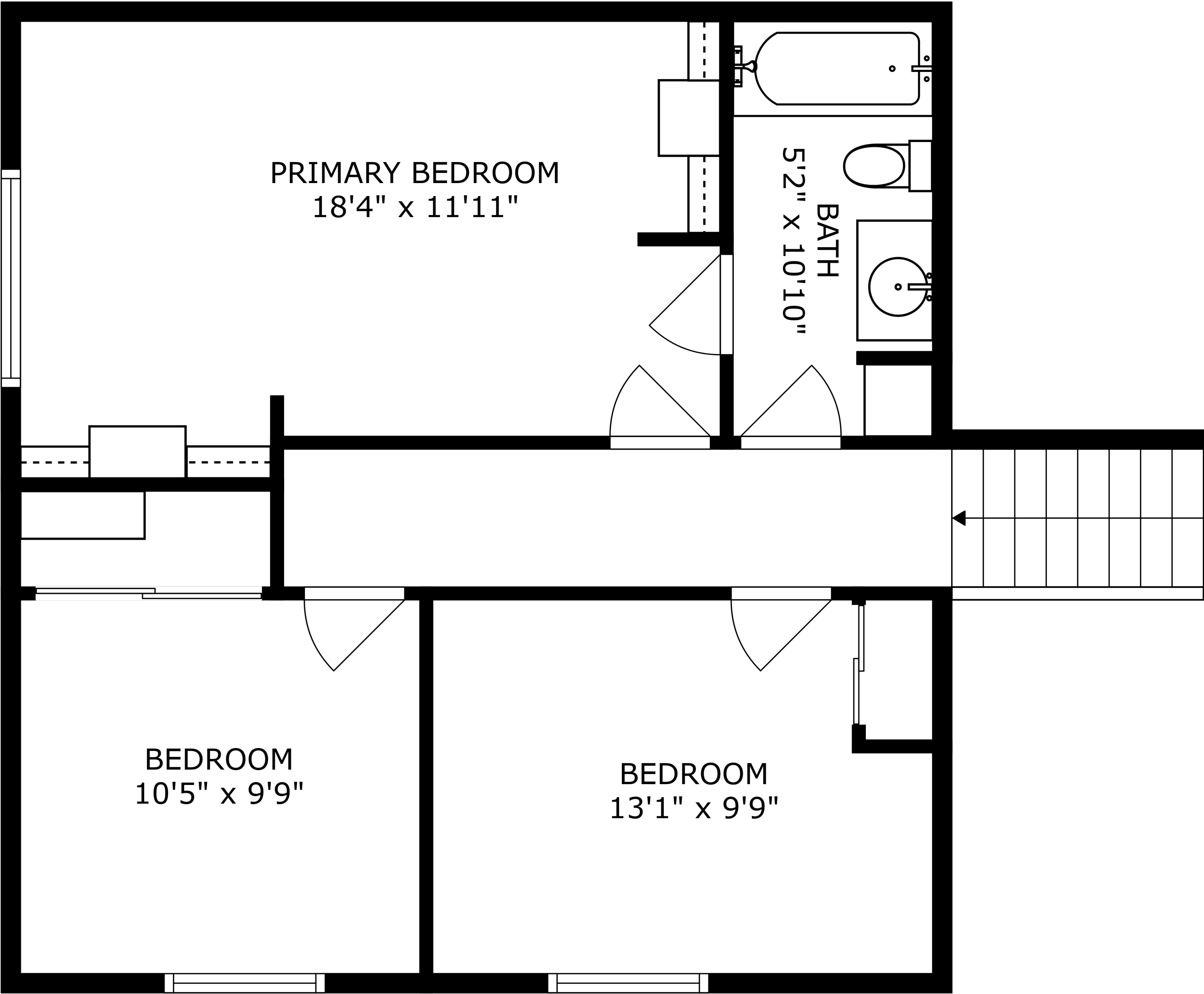


FLOOR 3

PATIO
16'3" x 20'0"



FLOOR 1



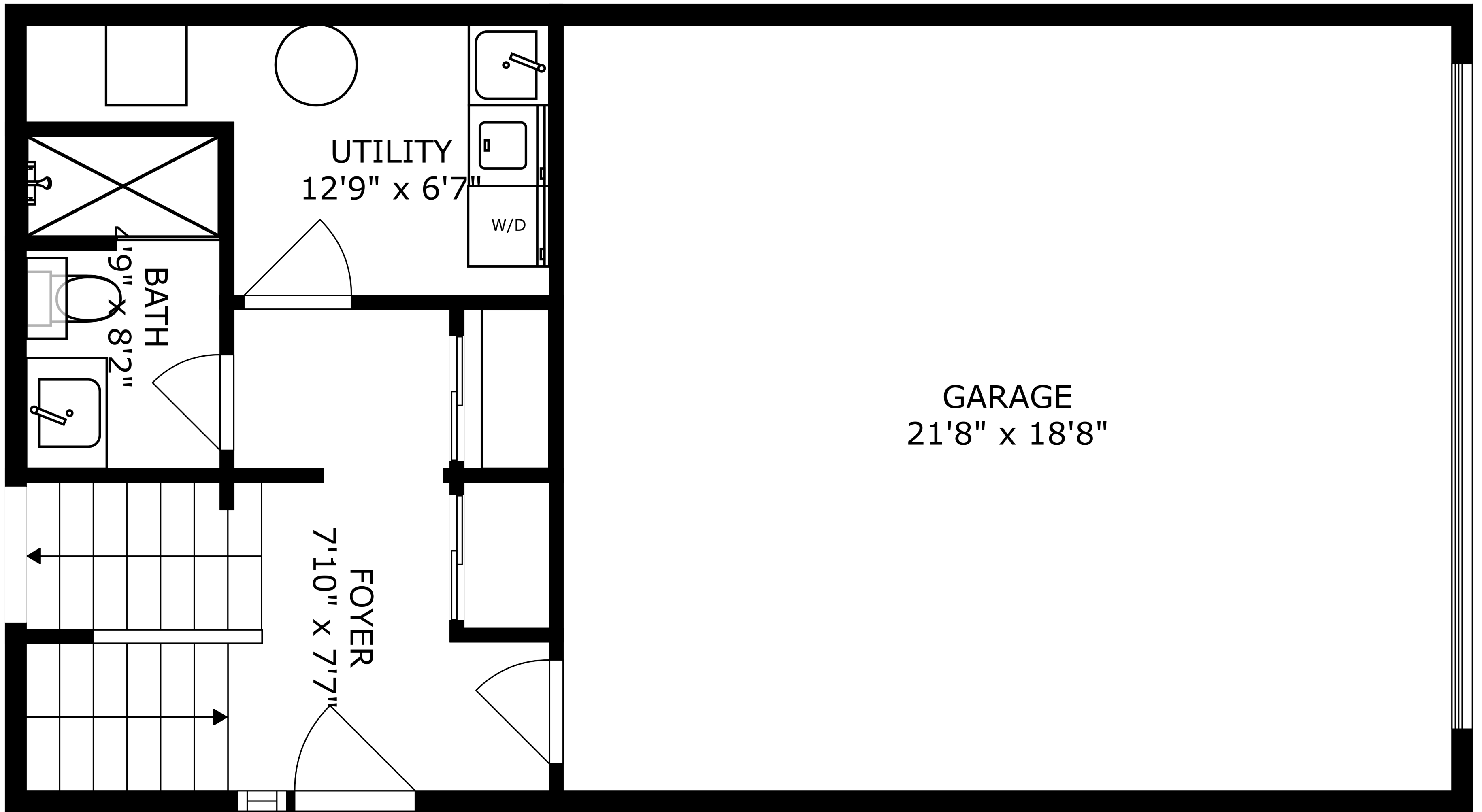
PRIMARY BEDROOM
18'4" x 11'11"

BATH
5'2" x 10'10"

BEDROOM
10'5" x 9'9"

BEDROOM
13'1" x 9'9"

SIZES AND DIMENSIONS ARE APPROXIMATE, ACTUAL MAY VARY.



PORCH
30'3" x 3'5"

PATIO
16'3" x 20'0"

DINING AREA
10'7" x 11'8"

KITCHEN
10'6" x 11'4"

REF

DW

LIVING ROOM
23'7" x 13'3"

