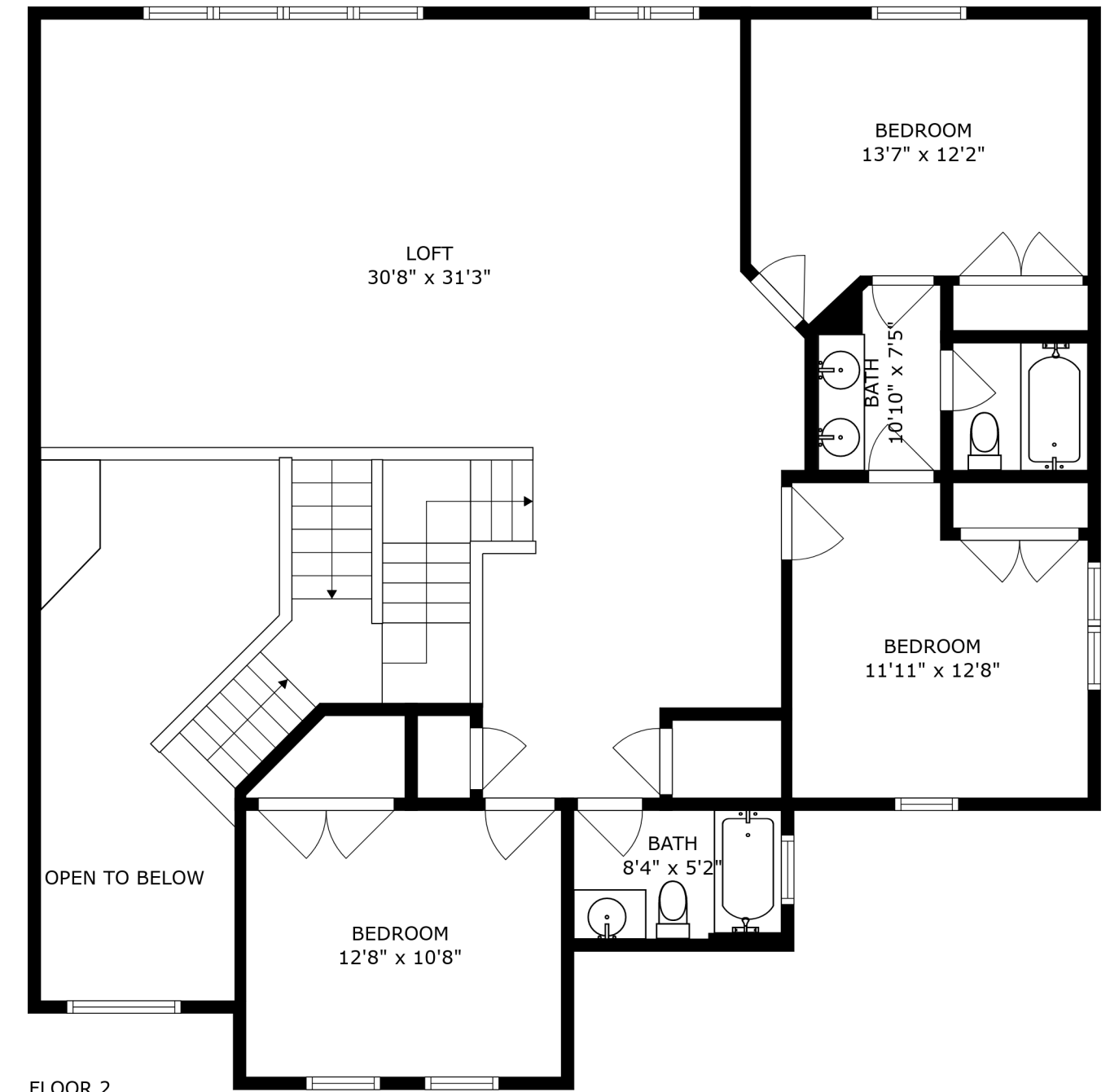
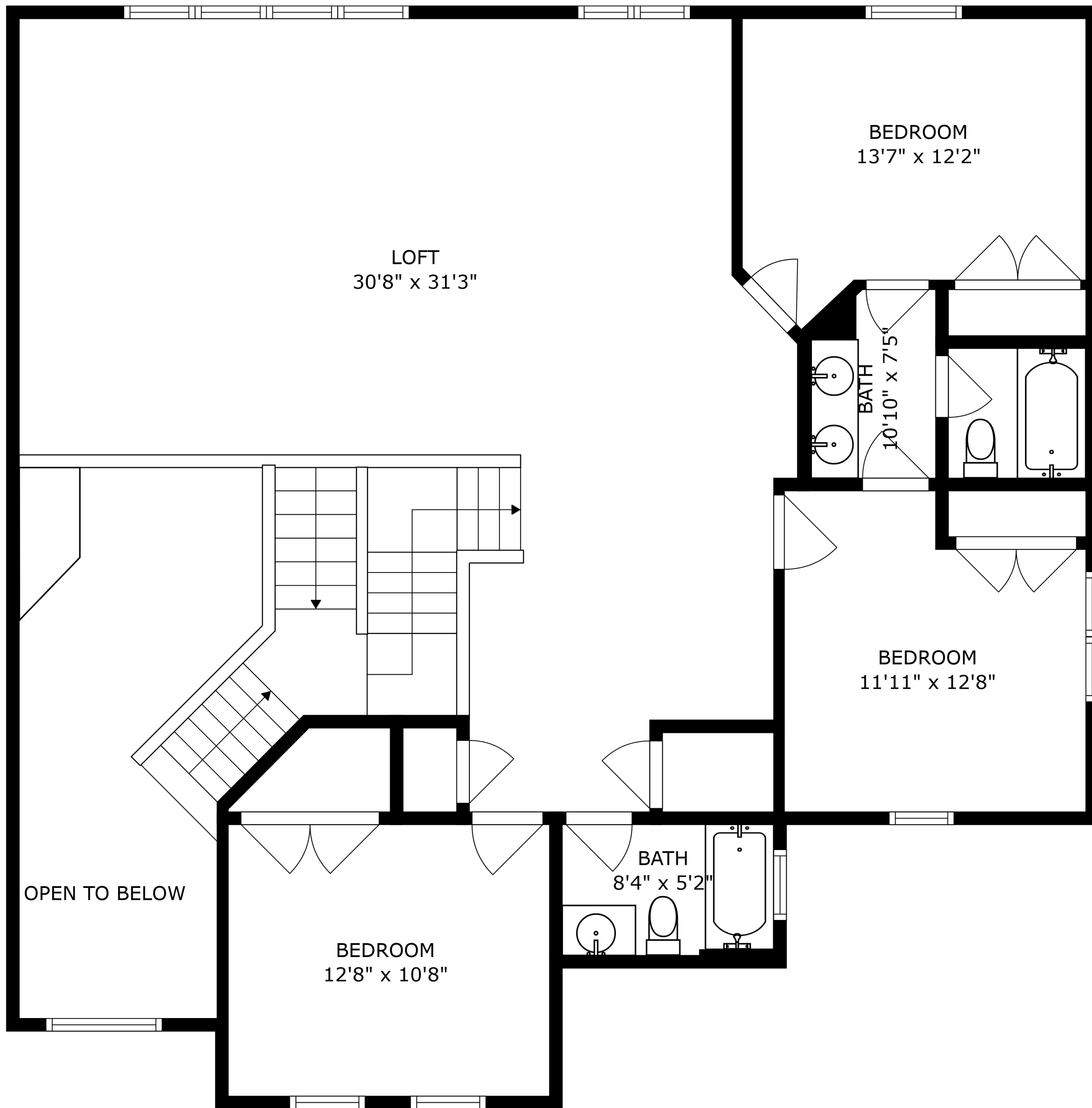


FLOOR 1



FLOOR 2

SIZES AND DIMENSIONS ARE APPROXIMATE, ACTUAL MAY VARY.



OPEN TO BELOW

LOFT  
30'8" x 31'3"

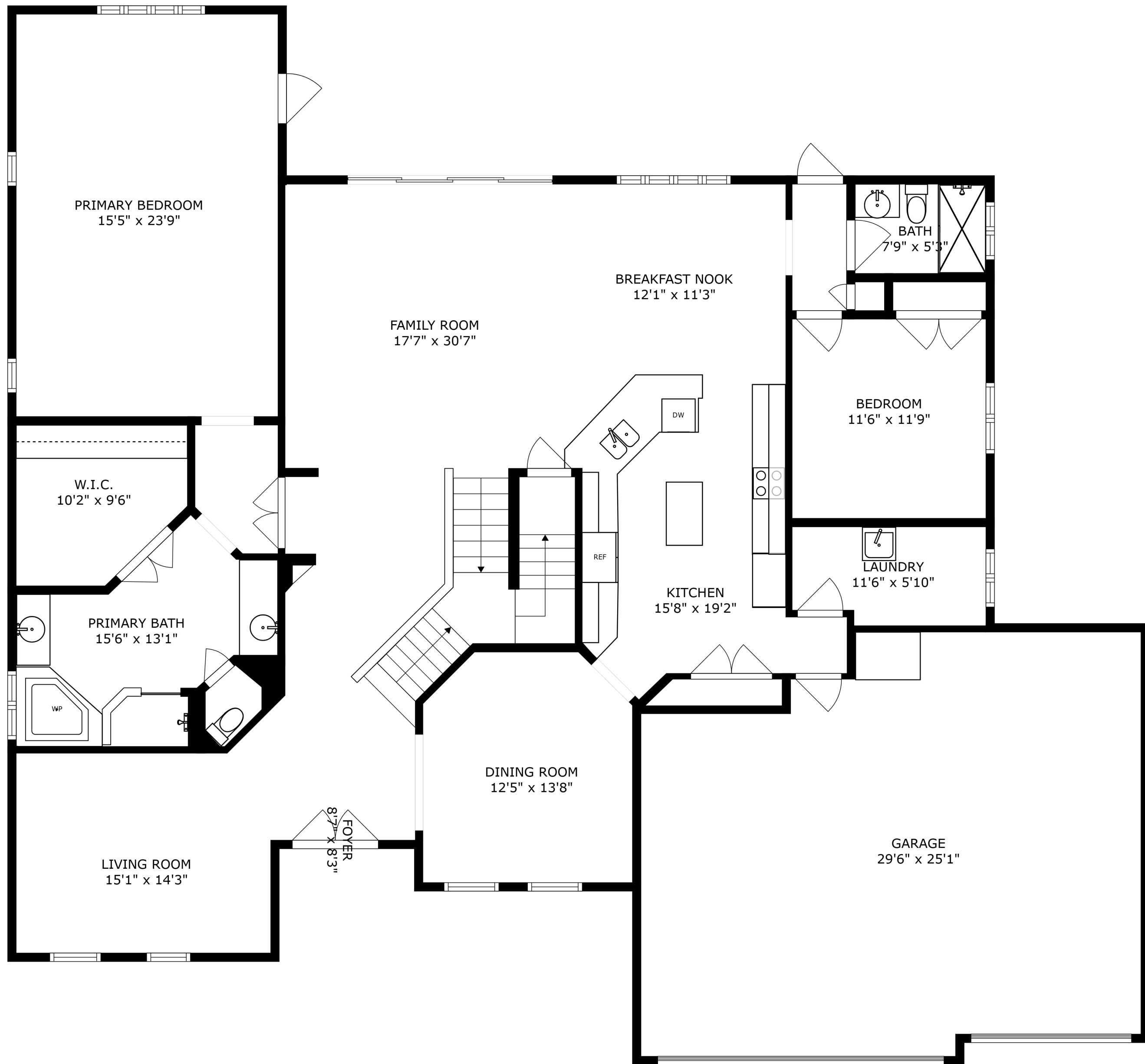
BEDROOM  
13'7" x 12'2"

BEDROOM  
11'11" x 12'8"

BEDROOM  
12'8" x 10'8"

BATH  
10'10" x 7'5"

BATH  
8'4" x 5'2"



SIZES AND DIMENSIONS ARE APPROXIMATE, ACTUAL MAY VARY.